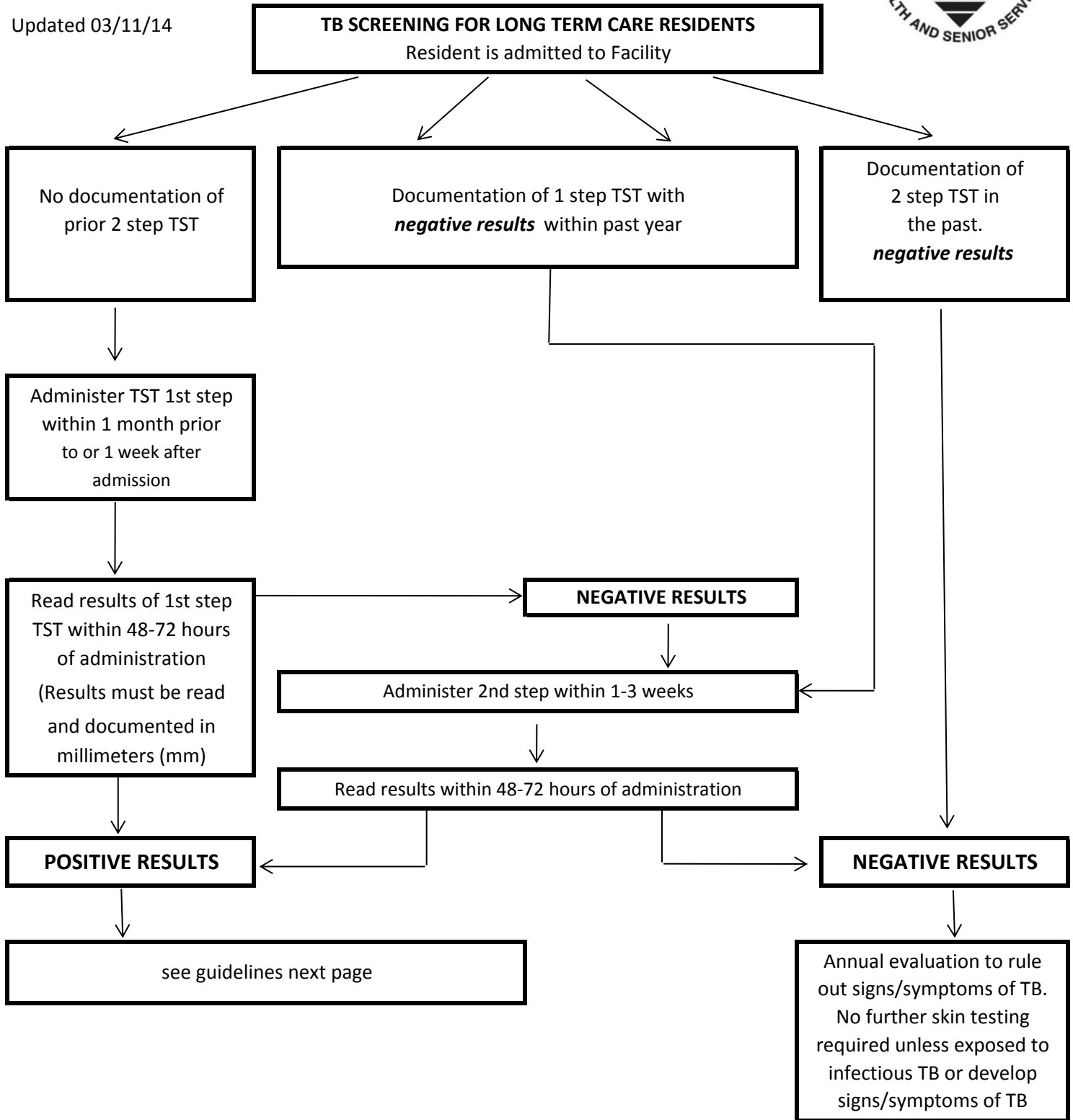
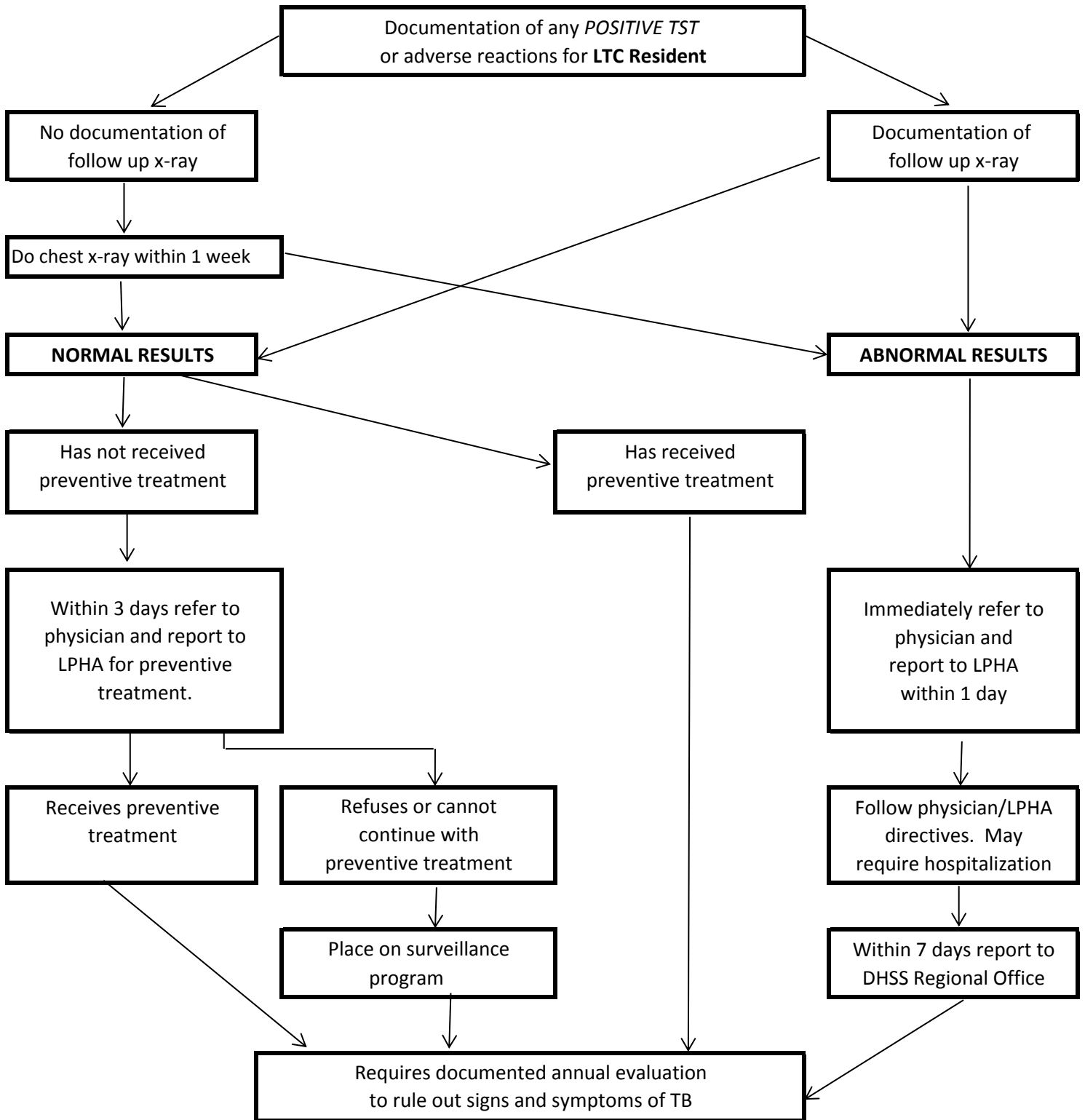




Updated 03/11/14



Per the CDC, it is acceptable to substitute IGRA blood tests for TST



TB = Tuberculosis
 TST = Tuberculin Skin Test
 LTC = Long Term Care
 LPHA = Local Public Health Agency
 DHSS = Department of Health and Senior Services

CDC = Centers for Disease Control
 IGRA = Interferon - Gamma Release Assay