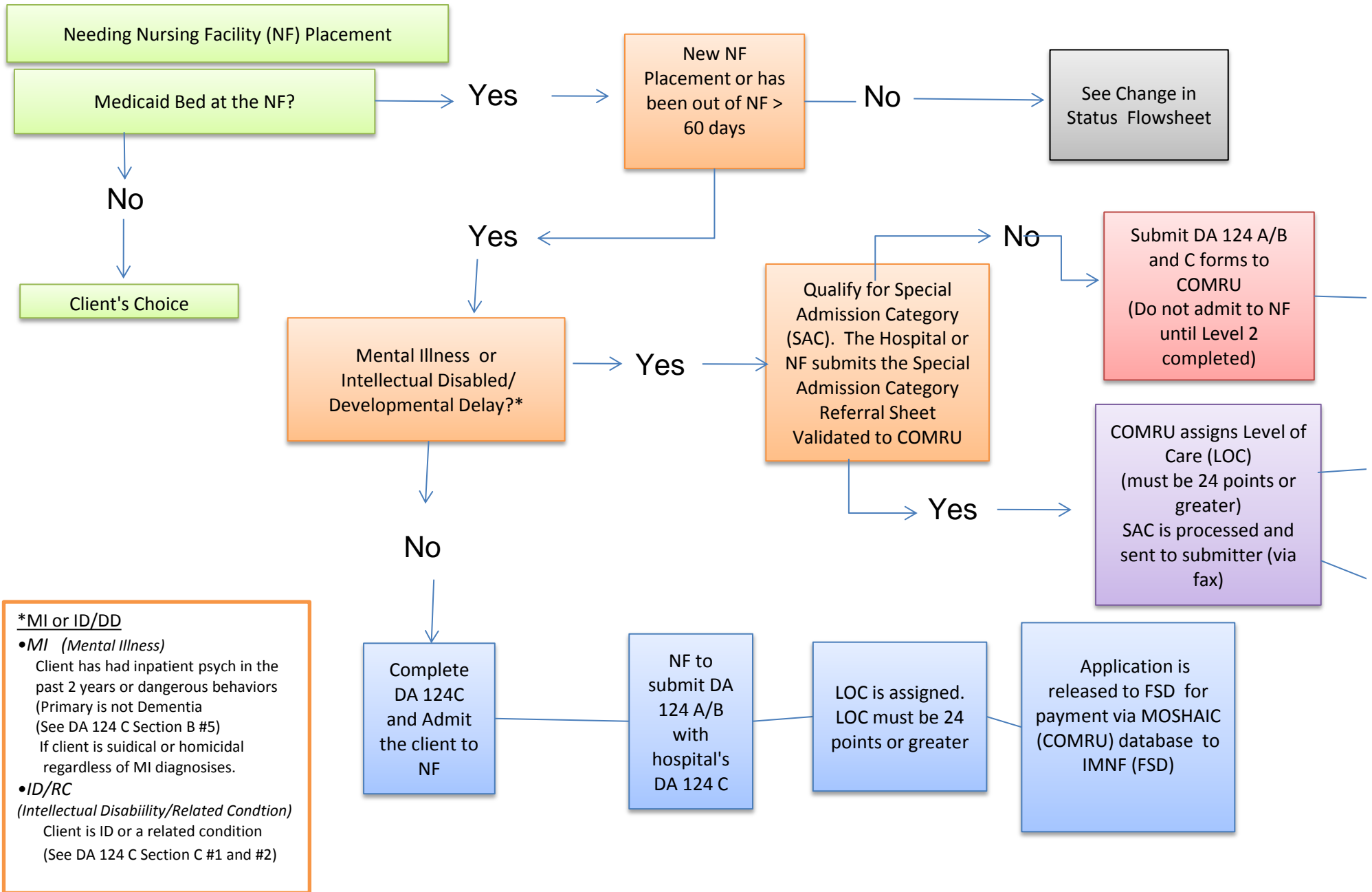
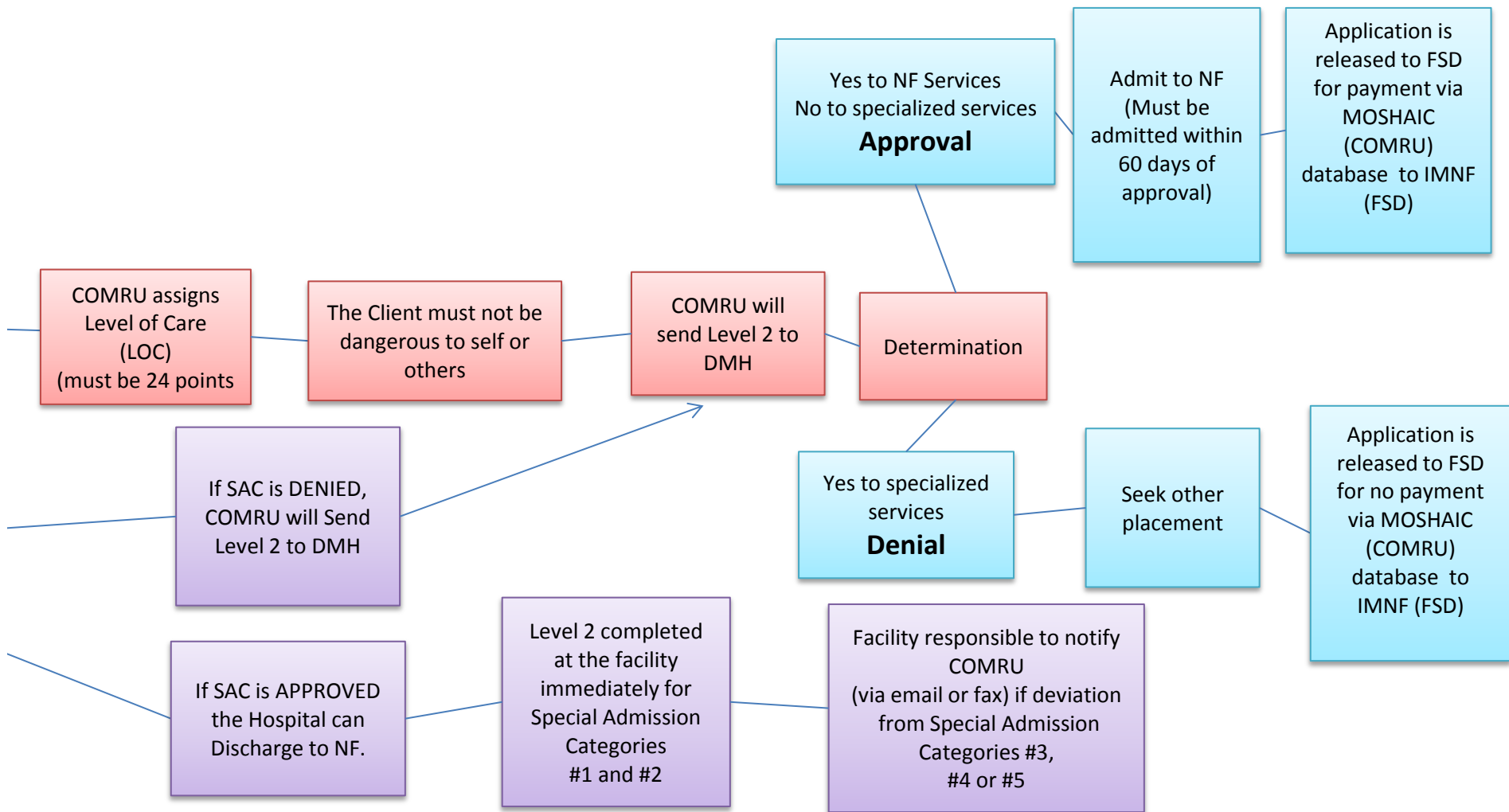


Hospital to Nursing Facility Placement Flow Sheet



Hospital to Nursing Facility Placement Flow Sheet



****Special Admission Categories** (located on the DA 124 C application):

1. Terminal Illness - expected to result in death in six months or less
2. Serious Physical Illness -- severe/end state disease (or physical condition as listed on back of DA 124 C form)
3. Respite Care -- stays not more than thirty days to provide relief for in-home caregiver
4. Emergency Provisional Admission -- must be hotlined. Stays not more than 7 days to protect person from serious physical harm to self and others
5. Direct Transfer from a Hospital -- stays not more than 30 days for the condition for which the person is currently receiving hospital care