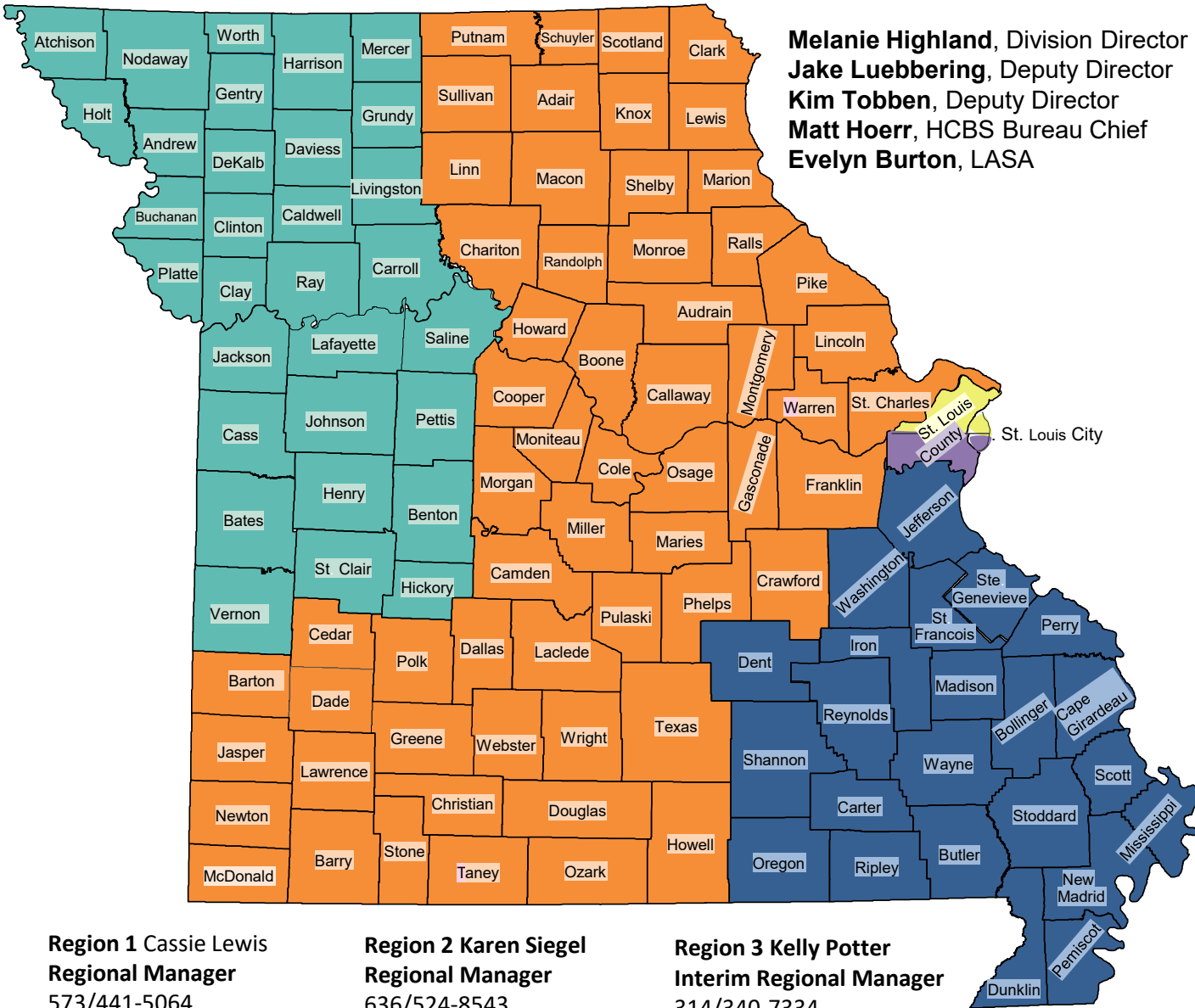




# Division of Senior and Disability Services

## Home and Community Based Services Regional Map

**Melanie Highland**, Division Director  
**Jake Luebbering**, Deputy Director  
**Kim Tobben**, Deputy Director  
**Matt Hoerr**, HCBS Bureau Chief  
**Evelyn Burton**, LASA



**Region 1 Cassie Lewis**  
**Regional Manager**  
573/441-5064  
[Cassie.Lewis@health.mo.gov](mailto:Cassie.Lewis@health.mo.gov)  
[hcsreg1@health.mo.gov](mailto:hcsreg1@health.mo.gov)

**Region 2 Karen Siegel**  
**Regional Manager**  
636/524-8543  
[Karen.Siegel@health.mo.gov](mailto:Karen.Siegel@health.mo.gov)  
[hcsreg2@health.mo.gov](mailto:hcsreg2@health.mo.gov)

**Region 3 Kelly Potter**  
**Interim Regional Manager**  
314/340-7334  
[Kelly.Potter@health.mo.gov](mailto:Kelly.Potter@health.mo.gov)  
[hcsreg3@health.mo.gov](mailto:hcsreg3@health.mo.gov)

**Region 4 Mary Koch**  
**Regional Manager**  
816/889-2212  
[Mary.Koch@health.mo.gov](mailto:Mary.Koch@health.mo.gov)  
[hcsreg4@health.mo.gov](mailto:hcsreg4@health.mo.gov)

**Region 6 Kelly Potter**  
**Regional Manager**  
636/949-7975  
[Kelly.Potter@health.mo.gov](mailto:Kelly.Potter@health.mo.gov)  
[hcsreg6@health.mo.gov](mailto:hcsreg6@health.mo.gov)

**HCBS Referrals:**  
[HCBSCallCenterReferrals@health.mo.gov](mailto:HCBSCallCenterReferrals@health.mo.gov)  
**Provider Reassessment Review:**  
[providerreassessmentreview@health.mo.gov](mailto:providerreassessmentreview@health.mo.gov)

**Intake & Person Centered Care Planning Team**  
**Jana Anderson, Bureau Chief**

**HCBS Intake and PCCP Management:**  
[HCBSIntakeAndPCCP@health.mo.gov](mailto:HCBSIntakeAndPCCP@health.mo.gov)

<b>Southwest</b> 417/895-6455	<b>Central</b> 573/441-6222	<b>Northwest</b> 816/889-2206
<b>Southeast</b> 573/290-5781	<b>East Central</b> 314/340-7300	<b>Statewide</b> 866/835-3505

**Care Plan/Provider Changes:**  
[PCCP@health.mo.gov](mailto:PCCP@health.mo.gov)