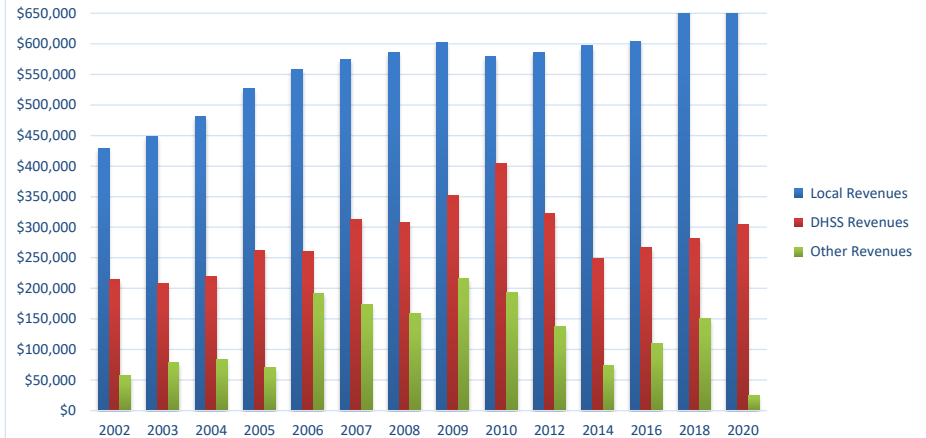


Miller County Health Center

COUNTY Fiscal Year	Revenue Source	Miller 2020	Percent of Agency's Total	Population 25,000-49,999 Ave. Percentage	Statewide 2020 Average Percentage
Beginning Balance		\$1,868,137			
Local Revenues					
Taxes		\$564,253	55.71%	40.43%	42.58%
Interest		\$4,728	0.47%	0.91%	0.69%
Vital Records		\$26,647	2.63%	3.26%	2.82%
Donations		\$5,418	0.53%	0.92%	0.40%
Fees		\$38,057	3.76%	2.51%	4.31%
Other		\$43,875	4.33%	13.68%	10.43%
Total Local Revenues		\$682,978	67.43%	61.71%	61.24%
DHSS Revenues					
Core Public Health	State	\$62,467	6.17%	5.51%	4.04%
Immunizations/Vaccine	State		0.00%	0.00%	0.00%
Immunizations/Vaccine	Federal		0.00%	0.31%	0.13%
MCH	Federal	\$23,820	2.35%	1.74%	1.15%
School Health	State	\$125	0.01%	0.01%	0.01%
WIC Administration	Federal	\$119,890	11.84%	12.60%	6.12%
Child Care Inspections	Federal	\$2,820	0.28%	0.14%	0.11%
Child Care Nurse Consultant	Federal	\$1,176	0.12%	0.32%	0.14%
AIDS Funding	Federal		0.00%	0.47%	2.29%
PHEP	Federal	\$15,363	1.52%	1.64%	1.49%
BCCCP/Show Me Healthy Women	State		0.00%	0.07%	0.03%
BCCCP/Show Me Healthy Women	Federal	\$1,103	0.11%	0.35%	0.14%
Chronic Disease Prevention	State		0.00%	0.00%	0.00%
Chronic Disease Prevention	Federal		0.00%	0.02%	0.06%
Worksite Inventory	Federal		0.00%	0.00%	0.00%
Other DHSS	State	\$450	0.04%	0.14%	0.35%
Other DHSS	Federal	\$77,444	7.65%	2.55%	3.14%
Other DHSS	Other Sources		0.00%	0.00%	0.00%
Total DHSS Federal		\$241,615	23.85%	20.14%	14.77%
Total DHSS State		\$63,042	6.22%	5.72%	4.43%
Total DHSS Other		\$0	0.00%	0.00%	0.00%
Total DHSS Combined Revenues		\$304,657	30.08%	25.86%	19.19%
Other Revenues					
Medicaid/MC+ (Non-Home Health)		\$18,377	1.81%	1.62%	1.81%
Medicare - (Non-Home Health)			0.00%	0.56%	0.24%
Family Planning Title X			0.00%	2.17%	0.59%
Other MO Departments (DOC, DESE, etc.)		\$30	0.00%	0.68%	0.12%
Insurance Billing			0.00%	1.10%	0.74%
Other Public Health Revenue					
Total (attach detail)		\$3,107	0.31%	4.37%	11.85%
Home Health (all pymt. sources)			0.00%	0.46%	2.47%
Home Maker (all pymt. sources)			0.00%	0.00%	0.30%
Other Non-Public Health Revenue					
Total (attach detail)		\$3,732	0.37%	1.49%	1.44%
Total Other Revenue		\$25,247	2.49%	12.43%	19.57%
Total Revenue All Sources		\$1,012,882	100.00%	100.00%	100.00%
Expenditures					
Salaries/Wages		\$564,206	51.55%	51.45%	47.69%
Fringe Benefits		\$194,271	17.75%	14.70%	15.06%
Supplies/Equipment		\$181,304	16.57%	7.80%	6.57%
Contracted Services		\$76,385	6.98%	4.00%	13.83%
Travel		\$13,277	1.21%	0.60%	0.55%
Utilities/Rent		\$42,402	3.87%	2.20%	1.42%
Election Costs			0.00%	0.04%	0.10%
Capital Expenditures			0.00%	6.31%	1.73%
Other		\$22,612	2.07%	12.91%	13.05%
Total Expenditures		\$1,094,456	100.00%	100.00%	100.00%
Accrual Adjustment (+ -)		\$19,596			
Ending Balance		\$1,806,159			
Population		25,619			
Per Capita Public Health Revenue		\$39.39			
Tax Rate		0.1238			

Miller County Revenue Comparison 2002 - 2010, 2012, 2014, 2016, 2018, 2020



Miller - 2020 DHSS Revenue

