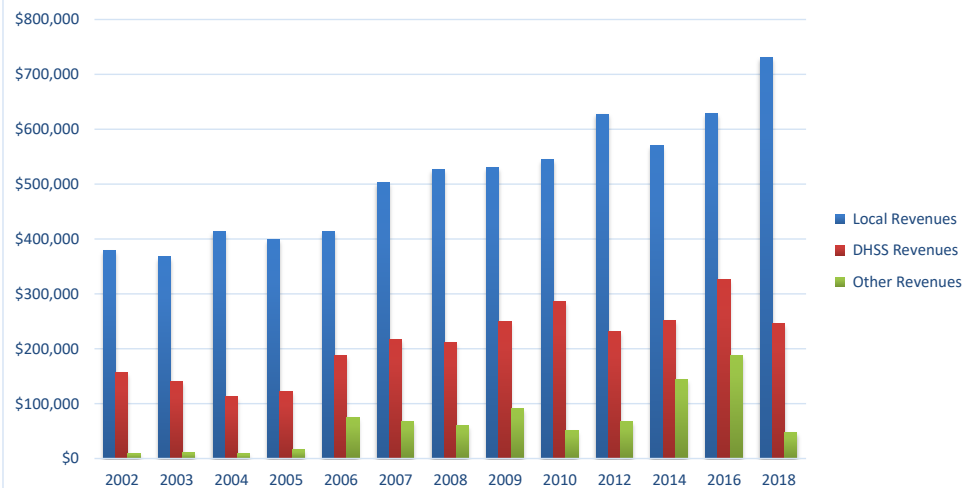


Stone County Health Department

COUNTY Fiscal Year	Revenue Source	Stone 2018	Percent of Agency's Total	Population 25,000-49,999 Ave. Percentage	Statewide 2018 Average Percentage
Beginning Balance		\$466,478			
Local Revenues					
Taxes		\$498,776	48.70%	45.60%	46.35%
Interest		\$598	0.06%	1.06%	0.55%
Vital Records		\$26,940	2.63%	3.60%	3.08%
Donations		\$2,797	0.27%	0.56%	0.21%
Fees		\$140,933	13.76%	3.86%	4.90%
Other		\$61,578	6.01%	3.23%	8.04%
Total Local Revenues		\$731,623	71.44%	57.92%	63.12%
DHSS Revenues					
Core Public Health	State	\$78,373	7.65%	6.26%	4.45%
Immunizations/Vaccine	State		0.00%	0.00%	0.00%
Immunizations/Vaccine	Federal	\$0	0.00%	0.00%	0.00%
MCH	Federal	\$20,563	2.01%	2.08%	1.39%
School Health	State		0.00%	0.04%	0.02%
WIC Administration	Federal	\$113,712	11.10%	13.62%	6.87%
Child Care Inspections	Federal	\$1,130	0.11%	0.20%	0.17%
Child Care Nurse Consultant	Federal	\$3,678	0.36%	0.36%	0.18%
AIDS Funding	Federal		0.00%	0.62%	1.97%
PHEP	Federal	\$24,624	2.40%	2.31%	1.76%
BCCCP/Show Me Healthy Women	State	\$3,456	0.34%	0.18%	0.04%
BCCCP/Show Me Healthy Women	Federal		0.00%	0.30%	0.17%
Chronic Disease Prevention	State		0.00%	0.00%	0.00%
Chronic Disease Prevention	Federal		0.00%	0.05%	0.05%
Worksite Inventory	Federal		0.00%	0.00%	0.00%
Other DHSS	State	\$0	0.00%	0.17%	0.40%
Other DHSS	Federal	\$0	0.00%	1.49%	1.95%
Other DHSS	Other Sources	\$0	0.00%	0.02%	0.01%
Total DHSS Federal		\$163,707	15.98%	21.03%	14.50%
Total DHSS State		\$81,829	7.99%	6.65%	4.91%
Total DHSS Other			0.00%	0.02%	0.01%
Total DHSS Combined Revenues		\$245,536	23.97%	27.70%	19.42%
Other Revenues					
Medicaid/MC+ (Non-Home Health)		\$33,030	3.23%	3.40%	2.47%
Medicare - (Non-Home Health)		\$51	0.00%	1.11%	0.76%
Family Planning Title X		\$4,650	0.45%	2.20%	0.44%
Other MO Departments (DOC, DESE, etc.)		\$0	0.00%	0.39%	0.12%
Insurance Billing		\$9,264	0.90%	1.41%	1.08%
Other Public Health Revenue					
Total (attach detail)		\$0	0.00%	3.03%	8.30%
Home Health (all pymt. sources)		\$0	0.00%	1.11%	2.68%
Home Maker (all pymt. sources)		\$0	0.00%	0.46%	0.47%
Other Non-Public Health Revenue					
Total (attach detail)		\$0	0.00%	1.28%	1.14%
Total Other Revenue		\$46,996	4.59%	14.38%	17.46%
Total Revenue All Sources		\$1,024,154	100.00%	100.00%	100.00%
Expenditures					
Salaries/Wages		\$596,113	58.12%	54.38%	47.38%
Fringe Benefits		\$187,342	18.27%	18.06%	16.86%
Supplies/Equipment		\$22,603	2.20%	8.23%	6.17%
Contracted Services		\$32,377	3.16%	4.13%	16.49%
Travel		\$7,407	0.72%	1.13%	1.09%
Utilities/Rent		\$58,641	5.72%	2.61%	1.94%
Election Costs		\$14,398	1.40%	0.07%	0.05%
Capital Expenditures		\$30,217	2.95%	1.07%	0.87%
Other		\$76,563	7.46%	10.31%	9.16%
Total Expenditures		\$1,025,661	100.00%	100.00%	100.00%
Accrual Adjustment (+ -)		\$25,390			
Ending Balance		\$490,362			
Population		31,047			
Per Capita Public Health Revenue		\$32.99			
Tax Rate		\$0.0785			

Stone County Revenue Comparison 2002 - 2010, 2012, 2014, 2016, 2018



Stone - 2018 DHSS Revenue

