



MISSOURI DEPARTMENT OF
**HEALTH &
SENIOR SERVICES**

Adolescent & School Health Program

Marjorie Cole, MSN, RN, FASHA
Missouri State School Nurse Consultant

Bureau of Community Health and Wellness



Meet Our Awesome Team



Benjamin Pringer
Program Manager



Marjorie Cole,
MSN, RN, FASHA
State School
Nurse Consultant



Ronnica Estes
Healthy Youth
Coordinator



Cera Lusher
Program
Specialist



Natalie Jackson
Administrative
Support Assistant

Public, Charter, Private and Parochial schools

School Health Services in Missouri

Promote best-practices in school health services:

- Vision and hearing screening
- Chronic conditions in the school setting (i.e., asthma, life-threatening allergies, diabetes, seizures)
- Communicable and infectious disease control
- Medication administration



Health Room services by RNs, LPNs and Health Aides

Training and Professional Development:

- Health Office Orientation
- Nurse Education Webinar Series (N.E.W.S.)
- Show-Me ECHOs
- Lead School Nurse Collaborative

Youth Engagement

Positive Youth Development Programs

Provide evidence-based healthy youth development programs:

- Teen Outreach Program (TOP)
- Making Proud Choices (MPC)
- Teen Connection Project (TPC)



Connect With Me

Strengthening connections:

- Connect with Me cards are a free resources that provide conversation starters to strengthen connections and help start meaningful conversations between youth and adults.
- Available in hard copy as well as on our mobile app

**SCAN ME TO
DOWNLOAD**



School Nurses work with their LPHAs a lot!

- ✓ Student immunizations records
- ✓ Schedule of immunization clinics for referrals
- ✓ Communicable disease reporting
- ✓ Communicable disease outbreak management
- ✓ Health education programs



What is ShowMeVax?

Electronic Reporting

COMMUNICABLE DISEASE REPORTING

Good communication among healthcare providers, childcare providers, school health staff, parents/guardians, and the health department can play a major role in preventing the spread of communicable diseases. It is important that parents/guardians let childcare providers and/or school staff know whenever their children are diagnosed with a communicable disease. Childcare providers and school health staff should check with the local or state health department to find out if any special measures are needed when informed of a child or staff member who has a communicable disease.

Missouri reporting rule

Many diseases must be reported to the health department: Missouri rule (19 CSR 20-20.02) fact sheets included in Section 6 indicate which diseases are reportable, and reportable diseases marked with an asterisk (*) in the table of contents.

Childcare providers and school health staff are required by the rule to report diseases to the health department. You do not need to worry about privacy issues or confidentiality when reporting diseases to the health department. Healthcare providers, laboratories, and others are also required to report. Some diseases can be very serious, so it is important that you call right away, even if you think the child may have already made a report. Check the MDHSS website for any changes in the reporting rule at <http://health.mo.gov/living/healthconditions/communicable/communicablediseases/ist2.pdf>.

Reportable Diseases in Missouri

Immediately reportable diseases or findings shall be reported to the Department of Health and Senior Services immediately upon knowledge of the disease or finding, or upon receipt of a facsimile or other rapid communication. Immediately reportable diseases or findings are:

(A) Selected high priority diseases, findings or agents that occur naturally, form an outbreak, or are associated with a bioterrorism event:

- Anthrax (022, A22)
- Botulism (005.1, A05.1)
- Plague (020, A20)
- Rabies (Human) (071, A82)
- Ricin Toxin (988, T62)
- Severe Acute Respiratory Syndrome-associated Coronavirus (SARS-CoV-2) (050, B03)
- Smallpox (variola) (050, B03)
- Tularemia (pneumonic) (021.2, A21.2)
- Viral hemorrhagic fevers (filoviruses (e.g., Ebola, Marburg, Ebola, A98, A99)

2. Reportable within one (1) day diseases or findings shall be reported to the Department of Health and Senior Services within one (1) calendar day of knowledge of the disease or finding, or upon receipt of a facsimile or other rapid communication. Reportable within one (1) day diseases or findings are:

- (A) Diseases, findings or agents that occur naturally, or from accidental exposure, or are associated with a bioterrorism event:
- Acute respiratory distress syndrome (ARDS) in patients under fifty (50) years of age (without a contributing medical history)
 - Animal (mammal) bite, wound, humans
 - Brucellosis (023, A23)
 - Cholera
 - Dengue fever
 - Diphtheria (032, A32)
 - Glanders (024, A24.0)

2023-2024 MISSOURI SCHOOL IMMUNIZATION REQUIREMENTS

- All students must present documentation of up-to-date immunization status, including month, day, and year of each immunization before attending school.
- The Advisory Committee on Immunization Practices (ACIP) allows a 4-day grace period. Students in all grade levels may receive immunizations up to four days before the due date.
- Missouri-required immunizations should be administered according to the current ACIP schedule, including all spacing, (CDC.Gov/vaccines/schedules).
- To remain in school, students "in progress" must have an Immunizations In Progress form (Imm.P.14) on file. In progress means that a child has begun the vaccine series and has an appointment for the next dose. This appointment must be kept and an updated record provided to the school. If the appointment is not kept, the child is no longer in progress and is noncompliant. (i.e., Hep B vaccine series was started but the child is not yet eligible to receive the next dose in the series.)
- Religious (Imm.P.11A) and Medical (Imm.P.12) exemptions are allowed. The appropriate exemption form must be on file. Unimmunized children are subject to exclusion from school when outbreaks of vaccine preventable diseases occur.

Vaccines	Dose Required by Grade												
	K	1	2	3	4	5	6	7	8	9	10	11	12
DTaP/DTaP/DT													
Tdap*	4*	4*	4*	4*	4*	4*	4*	4*	4*	4*	4*	4*	4*
MCV* (Meningococcal Conjugate)													
IPV (Polio)*													
MMR*	3*	3*	3*	3*	3*	3*	3*	3*	3*	3*	3*	3*	3*
Hepatitis B*	2	2	2	2	2	2	2	2	2	2	2	2	2
Varicella*	2	2	2	2	2	2	2	2	2	2	2	2	2

1. Last dose on or after the fourth birthday and the last dose of pediatric pertussis vaccine, is required.
2. **8-12 Grades:** Tdap, which contains pertussis vaccine, is required. Maximum needed: six doses.
3. **Grade 8-11:** One dose of MCV is required. Dose must be given after 10 years of age. The next-to-last and last dose should be at least six months apart.
4. **Kindergarten-12 Grade:** Last dose must be administered on or after the fourth birthday. Two doses of MCV are required unless the first dose was administered at the same day, they must be at least 28 days apart. The 4-day grace period does not apply to this dose.
5. First dose must be given on or after twelve months of age. If MMR and Varicella are not given on the same day, they must be at least 28 days apart. The 4-day grace period does not apply to this dose.
6. There must be at least four weeks between dose one and two; at least 8 weeks between dose two and three and final dose must be given no earlier than 16 weeks between doses one and two; at least 28 days apart. The 4-day grace period does not apply to this dose.
7. First dose must be given on or after twelve months of age. If Varicella and MMR are not given on the same day, they must be at least 28 days apart. The 4-day grace period does not apply to this dose.



"Bee" wise IMMUNIZE!

Preparing for school means getting your children vaccinated.

BACK TO SCHOOL

Protect your student at every age!

Data

School Health maintains a database for annual reporting, which is open to all schools in Missouri.

School Health



Welcome! 045078

[Student Encounters](#)

Due End of School Year



[School Health Services Update \(Staffing Survey\)](#)

Due Annually - October



[Special Healthcare Needs Survey](#)

Due Annually - October



[Summary Report of Immunization Status \(CD-31\)](#)

Submitted 12/2/2020



Please note the Report of Students in Noncompliance with Missouri Immunization Law (Imm.P.10) does not need to be returned. For questions contact Lynelle Paro at 573-526-7659.

Special Health Care Needs and Chronic Conditions

Chronic Health Conditions: Missouri Students

2023-2024 School Year



Student Population Reporting:

869,594

MO Student Enrollment, 2023-2024 School Year (DESE)

896,742

Asthma

69,765



Life Threatening Allergies

27,583



Seizure Disorder

7,277



Type 1 Diabetes

2,382



Type 2 Diabetes

492



*491 of 558 MO Public School Districts reporting, representing 88% MO public school students

Students with Disease and Chronic Health Conditions in Public Schools, Missouri 2023-2024

359776

Disease/Conditions	Number	Disease/Conditions	Number
Allergies – life threatening - Food	22,989	Sickle Cell Disease	479
Allergies – life threatening - Insect	3,553 (3.2%)	Heart disease with activity restrictions	985
Allergies – life threatening - Latex	1,041	Hemophilia/bleeding disorder	865
Asthma – on medication at home or school	69,765 (8%)	Hydrocephalus with shunt	621
Blind/Visually Impaired	10,618	Kidney disease	1,271
Cancer - History, not on medication	811	Mental Health (17.6%)	
Taking Chemotherapeutic Medication	182	• ADD/ADHD	77,055 (8.9%)
Chronic infection (e.g., Hepatitis, etc.)	149	• Anxiety	29,007 (3.4%)
Cleft lip and palate	497	• Autism Spectrum Disorder (ASD)	17,916
Cystic Fibrosis	264	• Bi-polar	2,218
Daily special health care procedures		• Depression	14,870
Blood sugar check	2,672	• Obsessive Compulsive Disorder	2,106
Catheterization care	281	• Oppositional Defiance Disorder	5,108
Ostomy care	154	• Post-Traumatic Stress Syndrome	3,126
Tube feeding	707	• Tourette's syndrome	1,259
Ventilator dependent	23	Migraine headaches	12,954
Suctioning	113	Neuromuscular disorder - non-progressive (Cerebral Palsy, etc.)	1,753
Nebulizer treatment	627	Neuromuscular disorder - progressive (e.g., Muscular Dystrophy, etc.)	414
Deaf/Hearing Impaired with no assistive devices	2,572	Organ Recipient	188
Deaf with FM systems	493	Orthopedic disability - permanent	2,002
Deaf with hearing aides	1,943	Orthopedic disability – temporary (e.g., Osgood Schlatter, fractures, etc.)	3,563
Deaf with cochlear implants	459	Scoliosis requiring treatment	1,053
Diabetes		Pregnancy	290
• Type 1	2,382	Teen Parenting	381
• Type 2	492 (0.33%)	Rheumatoid Arthritis	403
Eating disorder (Anorexia, Bulimia, etc.)	727	Autoimmune disease (e.g., Lupus, etc.)	1,483
Gastrointestinal Disorders (e.g., Irritable Bowel Syndrome, etc.)	7,926	Routine medications at school	24,753
Crohn's Disease	475	Seizure disorder	7,277 (0.84%)
Ulcers	164	Students with "do not attempt resuscitate" (DNAR) order	12
Bowel/Bladder Incontinence	4,975	Traumatic Brain Injury	1,237
Chromosomal Abnormalities (Down Syndrome, Neurofibromatosis, etc.)	2,700	504 Plans	28,404

** Totals do not reflect 67 districts that did not respond to the survey.

491 out of 558 public school districts reported data to MDHSS. The enrollment in these districts was 869,594 representing 97% of all students enrolled in public schools (896,742) in the 2023-2024 school year.

[359,940 of the 869,594 students included in the reporting indicate having health insurance – 396,703 of the 869,594 included in the reporting districts indicated they did not inquire about health insurance status]

[3/2024]

Student Health Data

	Missouri Schools	Nationwide
Life-threatening Food Allergies	2.6%	4%
Asthma	8.0%	7-10%
Seizure Disorders	0.8%	0.7%
Diabetes	0.3%	0.3%

Students with Disease and Chronic Health Conditions in Public Schools, Missouri 2023-2024

Disease/Conditions	Number	Disease/Conditions	Number
Allergies – life threatening - Food	22,989	Sickle Cell Disease	479
Allergies – life threatening - Insect	3,553	Heart disease with activity restrictions	985
Allergies – life threatening - Latex	1,041	Hemophilia/bleeding disorder	865
Asthma – on medication at home or school	69,765	Hydrocephalus with shunt	621
Blind/Visually Impaired	10,618	Kidney disease	1,271
Cancer - History, not on medication	811	Mental Health	
Taking Chemotherapeutic Medication	182	• ADD/ADHD	77,055
Chronic infection (e.g., Hepatitis, etc.)	149	• Anxiety	29,007
Cleft lip and palate	497	• Autism Spectrum Disorder (ASD)	17,916
Cystic Fibrosis	264	• Bi-polar	2,218
Daily special health care procedures		• Depression	14,870
Blood sugar check	2,672	• Obsessive Compulsive Disorder	2,106
Catheterization care	281	• Oppositional Defiance Disorder	5,108
Ostomy care	154	• Post-Traumatic Stress Syndrome	3,126
Tube feeding	707	• Tourette's syndrome	1,259
Ventilator dependent	23	Migraine headaches	12,954
Suctioning	113	Neuromuscular disorder - non-progressive (Cerebral Palsy, etc.)	1,753
Nebulizer treatment	627	Neuromuscular disorder - progressive (e.g., Muscular Dystrophy, etc.)	414
Deaf/Hearing Impaired with no assistive devices	2,572	Organ Recipient	188
Deaf with FM systems	493	Orthopedic disability - permanent	2,002
Deaf with hearing aides	1,943	Orthopedic disability – temporary (e.g., Osgood Schlatter, fractures, etc.)	3,563
Deaf with cochlear implants	459	Scoliosis requiring treatment	1,053
Diabetes		Pregnancy	290
• Type 1	2,382	Teen Parenting	381
• Type 2	492	Rheumatoid Arthritis	403
Eating disorder (Anorexia, Bulimia, etc.)	727	Autoimmune disease (e.g., Lupus, etc.)	1,483
Gastrointestinal Disorders (e.g. Irritable Bowel Syndrome, etc.)	7,926	Routine medications at school	24,753
Crohn's Disease	475	Seizure disorder	7,277
Ulcers	164	Students with "do not attempt resuscitate" (DNAR) order	12
Bowel/Bladder Incontinence	4,975	Traumatic Brain Injury	1,237
Chromosomal Abnormalities (Down Syndrome, Neurofibromatosis, etc.)	2,700	504 Plans	28,404

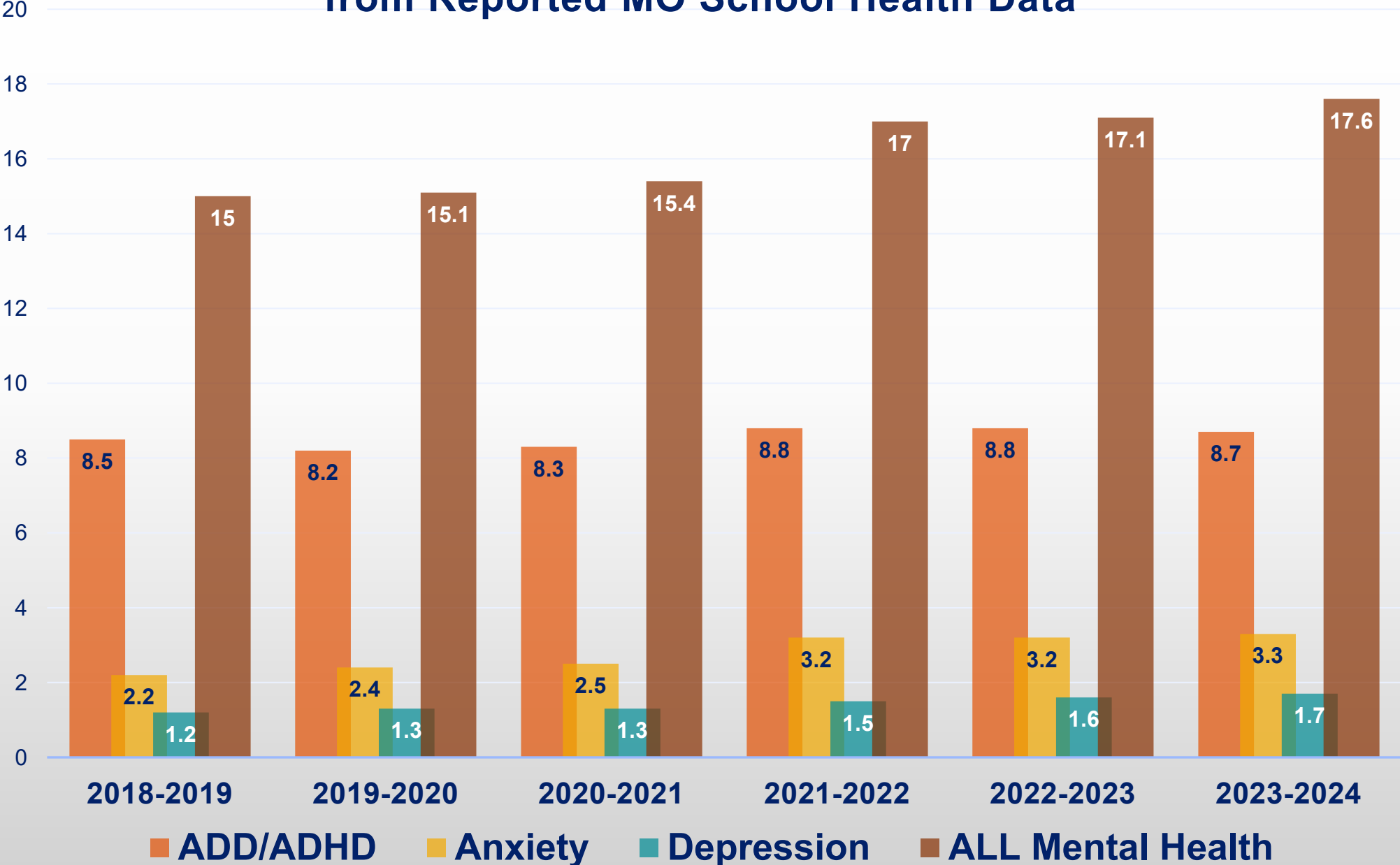
** Totals do not reflect 67 districts that did not respond to the survey.

491 out of 558 public school districts reported data to MDHSS. The enrollment in these districts was 869,594 representing 97% of all students enrolled in public schools (896,742) in the 2023-2024 school year.

[359,940 of the 869,594 students included in the reporting indicate having health insurance – 396,703 of the 869,594 included in the reporting districts indicated they did not inquire about health insurance status]

[3/2024]

% of Diagnosed Mental Health from Reported MO School Health Data



State of Missouri School Health Services Staffing 2023-2024

2023-2024 Nurse to Student Ratio

1,455 Full-Time RNs

445 Full-Time LPNs

48 FTE RNs (1,543 hrs/32) (117 part-time positions)

9 FTE LPNs (304 hrs/32) (23 part-time positions)

1,503 RNs**

454 LPNs**

Nurse-to-Student Ratio

Public School only population from DESE database: **896,742**

(From [DESE Dashboard, District Enrollment 2024 Preliminary](#))

Total RNs 1: 596

Total Nurses (RN, LPN) 1: 458

** 524 of the 558 districts reporting total nurses representing 94% of staff

(From School Health Online

Reporting System)

Health Staff Positions

Total positions = position/2449 = percentage

356 Health Aides/Clerks/Contact

53 Social Workers

468 LPNs

1,477 RNs

95 Certified School Nurses (RNs)

2,449

Professional Health Services Staff by degree

414 ADN (default)

196 Diploma

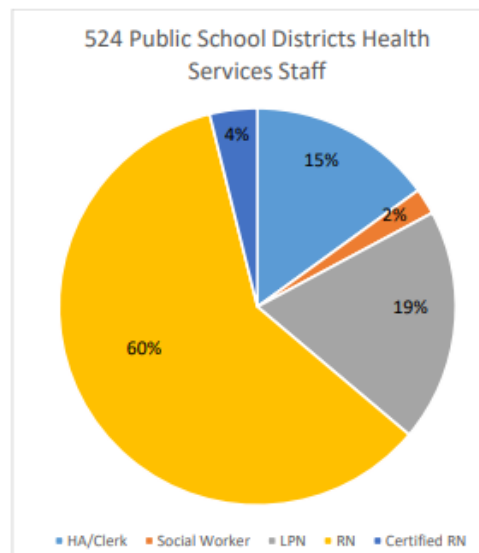
900 BA/BS/BSN

71 MA/MS/MSN (4 APRN)

5 Doctorate

20 BSW

33 MSW



■ HA/Clerk ■ Social Worker ■ LPN ■ RN ■ Certified RN

From School Health Online Reporting system)

Professional Staff in the Health Office

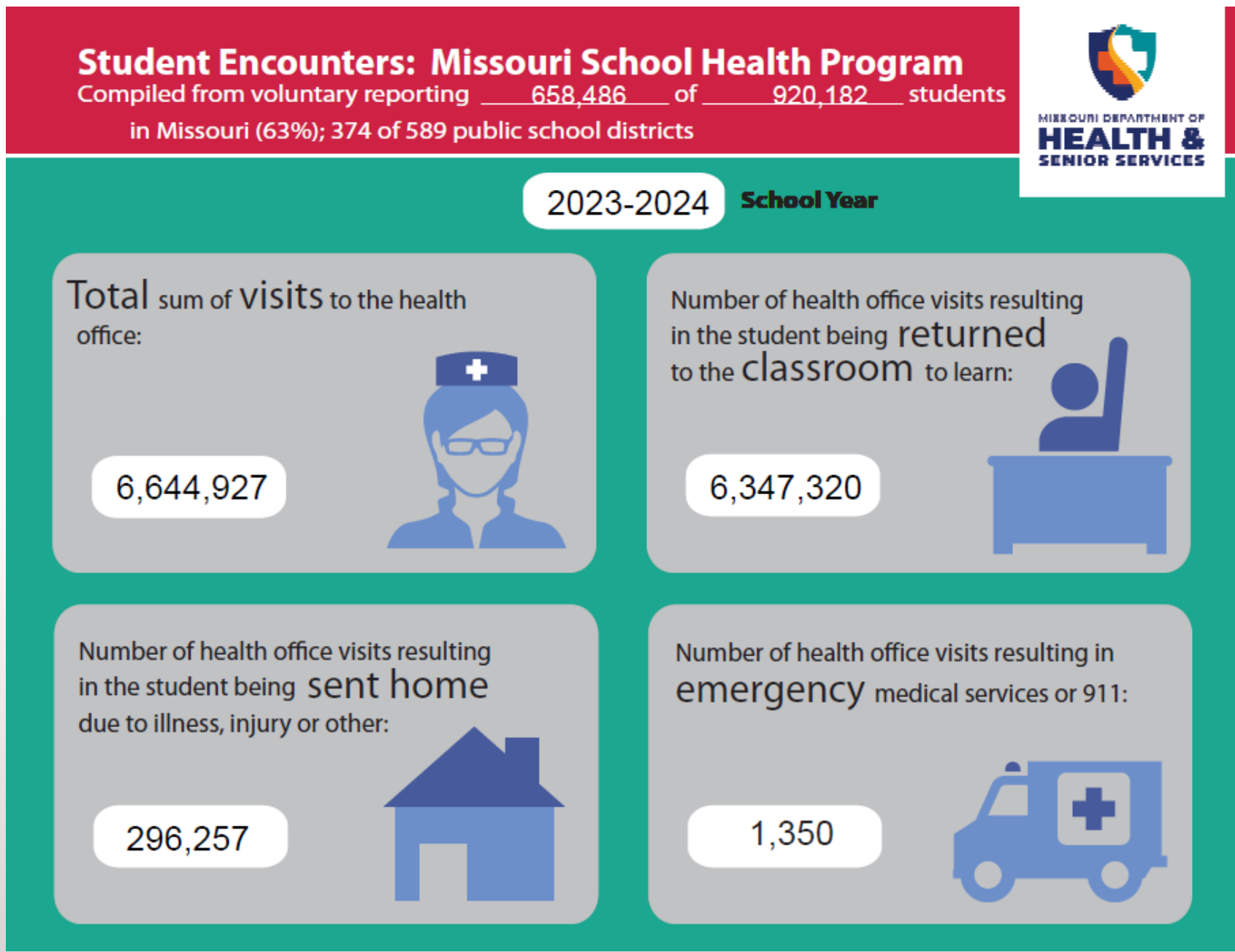
Students are safer because we have nurses and trained staff in the health room.



Student Encounters

Annual data report on student visits to the health office

- ✓ How many visits for school health services?
- ✓ What was the disposition of each encounter?



Current Services and Projects

Connect With Me



SN CHAT
School Nurse Chronic Health Assessment Tool

N.E.W.S.



Conference Sponsorships
for School Health and
Medical Professionals



COVID and KIDS
ECHO

Current Services and Projects

MO KIDS TEAMS

(Missouri Keeping Infectious Disease out of Schools through Training, Education, Assistance, Mentorship, and Support)



Health Office
Orientation

Missouri TEAMS

Health services Assessment
Tool for Schools (HATS)



Teen Outreach
Program



Making Proud
Choices



Current Services and Projects

**Collaborative
Infection Prevention
and Control Training**



**Whole Student
Wellness Workshops**



**National School
Nurse Certification**



**School Nurse
Supervision &
Support Program**



**Show Me
School Health**



MISSOURI DEPARTMENT OF
**HEALTH &
SENIOR SERVICES**

QUESTIONS?



Marjorie.Cole@health.mo.gov



(314) 877-2848



Health.Mo.Gov