



MISSOURI DEPARTMENT OF  
**HEALTH &  
SENIOR SERVICES**

---

Office of Rural Health and Primary Care

# Missouri Organizational Chart



# Missouri Department of Health and Senior Services (DHSS)



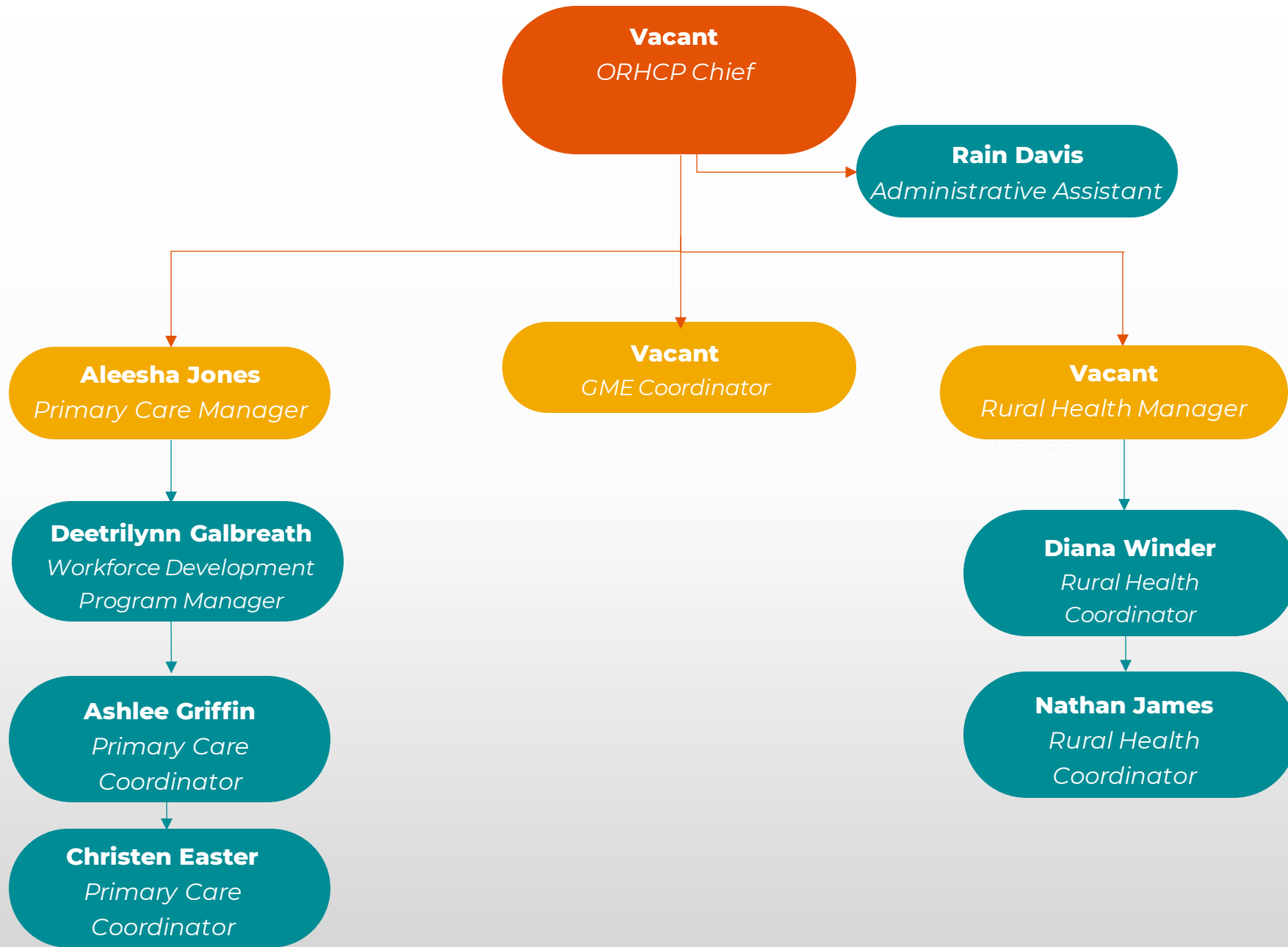
## **VISION**

Optimal health and safety for all Missourians, in all communities, for life.



## **MISSION**

To promote health and safety through prevention, collaboration, education, innovation and response.



# ORHPC Programs and Grants

## Missouri Office of Rural Health (MORH)

- State Office of Rural Health (SORH) Grant
- Small Rural Hospital Improvement Program Grant (SHIP)
- Medicare Rural Hospital Flexibility (Flex) Grant Program

## Missouri Primary Care Office (PCO)

- Primary Care Office (PCO) Grant
- J-1 Visa/State 30 Waiver Program
- National Interest Waiver (NIW) Program

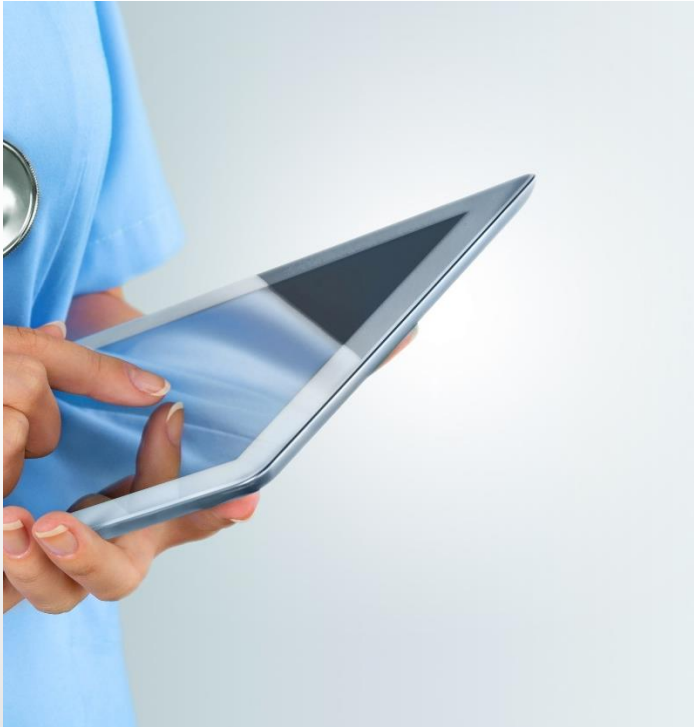
## PCO: Financial Incentive Programs

- Missouri Student Loan Repayment Program (SLRP) Grant
- Health Professional Loan Repayment Program (HPLRP)
- Rural Primary Care Physician Grant Program
- Graduate Medical Residency Grant
- Community-Based Faculty Preceptor Tax Credit

# Missouri State Office of Rural Health



**Small Rural Hospital  
Improvement Plan**



**Medicare Rural Hospital  
Flexibility Grant**

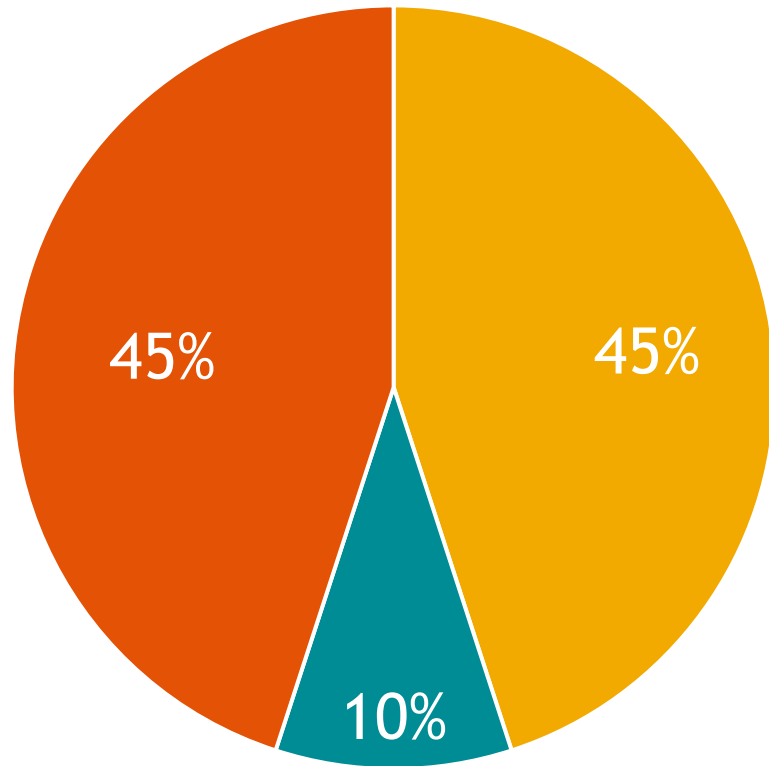


**State Office of Rural Health**

# Small Rural Hospital Improvement Program (SHIP)

- ▶ The SHIP grant provides funding for small rural hospitals, 49 beds or less, to:
  - Implement quality and operational improvement efforts to meet their organization's value-based payment care goals.
  - Participate in delivery system reforms such as becoming or joining a Medicare Shared Saving Program, Accountable Care Organization (ACO), or other shared saving programs.
  - Purchase hardware, software, and telemedicine equipment to meet data system requirements established under the Medicare Program.
- ▶ With these funds, many small rural hospitals have invested in activities such as MBQIP Data collection, telehealth and ICD-10 software.

# Missouri FY23 SHIP Category Selections



- Value-Based Purchasing (VPB)
- Accountable Care Organization (ACO) or Shared Savings
- Payment Bundling (PB) or Prospective Payment Systems (PPS)



# Medicare Rural Hospital Flexibility Program (Flex)



DHSS FLEX Technical Assistance Contractors

# Overview

- ▶ The FLEX program supports critical access hospitals (CAHs), hospitals with 25 beds or fewer, emphasizing continuous quality improvement, quality reporting, performance improvement, and benchmarking to improve patient care, financial practices, and hospital operations.
- ▶ Flex also assists facilities with establishing or expanding the provision of rural emergency medical services.
  - Flex focuses on:
    - Increasing the number of CAHs consistently reporting quality data.
    - Improving the quality of care in CAHs.
    - Maintaining and improving the financial viability of CAHs.
    - Building the capacity of CAHs to achieve measurable improvements in the health outcomes of rural communities.

# Missouri State Office of Rural Health

## Successes

- Mobile Integrated Health (MIH) Kickoff
- NRHA Rural CEO Training
- Two models published in RHIMHub
- MRHA Connect Platform
- Access to specialty care services in rural MO study

## Resources

- Letters of Support
- [Rural Health Webpage](#)
- [RHI Center \(The Blog\)](#)
- [Rural Health Publications](#)

- Biennial Report



# Missouri Primary Care Office



Primary Care Office



Financial Incentive Programs

# Rural Recruitment and Retention

## Health care workforce shortages, placement, and retention partnerships:

- Partnership with Missouri Primary Care Association (MPCA)
- 3RNet:
  - ✓ National nonprofit network of members matching health care professionals with jobs in rural and underserved health care facilities.
  - ✓ Joni Adamson, CPRP  
Director of Recruitment and Workforce Development  
Missouri Health Professional Placement Services (MHPPS)  
(573) 636-4222 email: [jadamson@mo-pca.org](mailto:jadamson@mo-pca.org).

# HPSA Designations

- ▶ Geographic/Population Based HPSAs
  - ▶ 80 of the 102 Primary Care HPSAs are in Rural Areas
  - ▶ 17 of the 24 Mental Health HPSAs are in Rural Areas
  - ▶ 77 of the 92 Dental Health HPSAs are in Rural Areas
- ▶ Missouri only has 1 county (Cass County) that does not have a geographic or population-based Primary Care, Dental Health, or Mental Health HPSA.
- ▶ Total of 9,164 primary care, mental health, and dental health providers.
  - ▶ 2,201 (24%) practice in rural counties.
    - ▶ 33% of Missouri's total population lives in rural areas.
  - ▶ More providers practice in urban areas.
    - ▶ 76% provide services to the 67% urban residents.

# Missouri Health Professional Student Loan Repayment Programs

- ▶ Student Loan Repayment Program (SLRP)
- ▶ Health Professional Loan Repayment Program (HPLRP)
  - ❖ Designed to increase access to health care in HPSAs.
    - ✓ Recruitment/retention of providers in areas of defined need.
    - ✓ Awards loan repayment funds to qualified professionals.
    - ✓ Earn forgiveness by serving at DHSS-approved sites for a period of 2 years per loan award.
    - ✓ Application cycle September 1, 2024-November 1, 2024

# Student Loan Repayment Program (SLRP)

- ▶ A competitive federal grant, utilized to award funding for educational loan repayment.
- ▶ Primary Care Physicians (MD, DO), Dentists (DDS, DMD), Psychiatrists (MD, DO): \$50,000
- ▶ Opportunity for an additional \$10,000 (\$2,500 for each qualifying service offered)

Eligible M.D. & D.O. Specialties
Family Medicine
General Medicine
Internal Medicine
Pediatrics
Obstetrics & Gynecology
Psychiatry

✓ Substance Use Disorder Treatment	✓ Opioid Use Disorder Treatment
✓ Behavioral and Mental Health Services	✓ Telehealth Services



# Health Professional Loan Repayment Program (HPLRP)

- ▶ Competitive State program to award funding to qualifying health care, mental health, and public health professionals to repay qualifying educational debt.
- ▶ Eligible profession types posted on the HPLRP web page.

## Health Care

---

- Cardiologist
- Physical Therapist
- Occupational Therapist
- Respiratory Therapist

## Public Health

---

- Public Health Nurse

## Mental Health

---

- Licensed and provisional professional counselor
- Licensed behavior analyst
- Licensed assistant behavior analyst
- Licensed and provisional licensed psychologist

Must be treating substance use & opioid use disorders.



# Health Professional Student Loan Program (HPLRP) Award Amounts

Profession Area	Degree	Award amounts
Licensed health and mental health practitioners	Doctorate	\$65,000.00
Licensed health or mental health providers	Bachelor's or Master's	\$35,000.00
Public health professionals	Bachelor's or Higher	\$20,000.00
Licensed health or mental health providers	Associate's	\$10,000.00

# SLRP and HPLRP Eligibility

- ▶ Missouri licensed, if applicable to profession;
- ▶ United States citizen;
- ▶ Missouri resident;
- ▶ Have qualifying educational debt; and
- ▶ Willing to serve in a Missouri area of defined need, such as a Health Professional Shortage Area (HPSA).
- ▶ To apply the applicant must also be one of the health profession types identified as eligible for the program they are applying for.

# SLRP and HPLRP Program Compliance & Earning Forgiveness

Maintain full-time qualifying employment

Complete Required Employment Verification Forms

Complete Service Obligation

Provide Proof of Use of Funds

# Missouri Graduate Medical Education (GME) Grant Program

- ▶ To improve and expand access to health care in Missouri by developing new sustainable residency positions and programs to address the physician workforce shortages and challenges Missouri's rural and underserved communities face.
  - ▶ Family medicine,
  - ▶ General internal medicine
  - ▶ General obstetrics and gynecology (Ob/GYN),
  - ▶ General psychiatry



<https://health.mo.gov/living/families/primarycare/gme/index.php>

# Community-Based Faculty Preceptor Tax Credit Program

- ▶ Tax credit program for community-based physicians or physician assistants providing instruction to physicians and physician assistant students in primary care.
- ▶ \$1,000 per completed preceptor rotation (120 hours), for a maximum of \$3,000 (3 credits) each year, not to exceed the preceptor's tax liability.
- ▶ Applications
  - ▶ Awarded on a first come, first serve basis.
  - ▶ The application opens July 1st
  - ▶ Application deadline is January 31 of each calendar year following the tax year in which the preceptorship is provided.



# Rural Primary Care Physician Grant Program

- ▶ Award amount up to \$194,000
- ▶ Selection made by a competitive bid process.
- ▶ Must be:
  - ▶ A primary care physician (family medicine, internal medicine, pediatrics, or obstetrics and gynecology).
  - ▶ Begin practice after July 1, 2022, in a Missouri county with a population of fewer than thirty-five thousand (35,000) inhabitants.
  - ▶ Agree to reside and practice primary care in an underserved rural Missouri county for a period of five (5) years.
- ▶ Application for Bid will be posted February 2025



<https://health.mo.gov/living/families/primarycare/ruralphysiciangrant/index.php>



MISSOURI DEPARTMENT OF  
**HEALTH &  
SENIOR SERVICES**

# QUESTIONS?



- [ORHPCinfo@health.mo.gov](mailto:ORHPCinfo@health.mo.gov)
- [DHSS.LoanRepayment@health.mo.gov](mailto:DHSS.LoanRepayment@health.mo.gov)



- 573-751-6441
- Fax: 573-522-8146



- [Health.Mo.Gov](http://Health.Mo.Gov)
- [health.mo.gov/living/families/primarycare/](http://health.mo.gov/living/families/primarycare/)
- [health.mo.gov/living/families/ruralhealth/index.php](http://health.mo.gov/living/families/ruralhealth/index.php)