

Foundational Public Health Services Gap Analysis Project



Institute of Public Policy
University of Missouri

Project made possible with funding from the Missouri Department of Health and Senior Services (#DH230052945_Yr1).

Foundational Public Health Services Gap Analysis Project

- DHSS Goal: Provide foundational public health services to all Missourians.
- Project Purpose: Generate estimates of the additional state funding required to bring Missouri's local public health services into alignment with the FPHS model.
- Steering committee launched in May 2023 to guide the process.
- Missouri-specific, Excel-based Gap Analysis Tool under development.
- Zoom-based training begins January 10, 2024.



Project Team



Jill Lucht, MS –
Project Director



Syrus Duffy, MPA –
Research Specialist



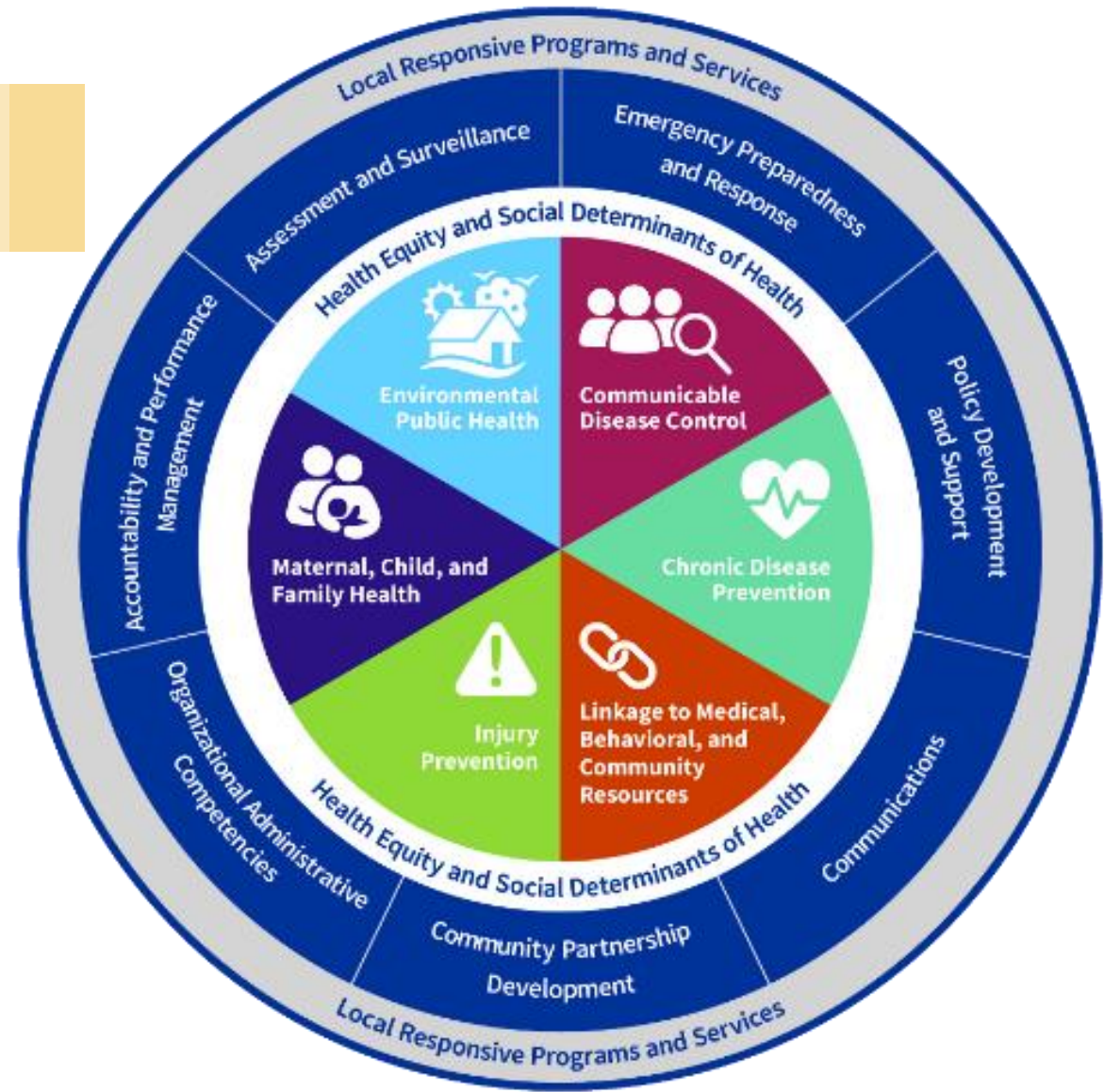
Adrienne Ohler, PhD –
Co-Primary Investigator



Sara Gable, PhD –
Primary Investigator

Missouri's FPHS Model

- Based on [Healthier MO's earlier work](#).
- Adopted by DHSS.



Local Public Health Agency Benefits

- New insight within your LPHA about how resources and services are allocated.
- Accurate data to share with Boards, staff, and community stakeholders that identifies specific gaps in the FPHS for your jurisdiction.
- Information for budgets, staffing, and departmental strategic plans.
- Comparison of data across jurisdictions.
- New opportunities for budgeting, planning, program delivery, and sharing services among health departments.
- The financial reporting tool shortens the Infrastructure Survey collected by DHSS every even year (i.e., 2024 and 2026) and replaces form DH37 due in odd years (i.e., 2025).
- Completing the FPHS tool supports the process of pursuing accreditation.
 - *Technical assistance available from DHSS to utilize this tool for your accreditation journey.*

Statewide Benefits

- Increase visibility of public health in communities across the state.
- Critical talking points for local and statewide communications that tell a compelling story for years to come about public health in Missouri.
- Analysis of the public health services currently provided to Missouri residents.
- Identify opportunities for strategic state investment and engagement.
- Provide essential information to the state legislature as they plan for public health funding.

Next Steps

1. Appoint agency point-of-contact.

The point-of-contact will be responsible for filling out the Excel tool and working with our team to distribute and communicate training opportunities and materials to their home LPHA team.

2. Have point-of-contact follow these steps to join Canvas (please, no later than December 31, 2023):

- Click on the link: <https://canvas.umsystem.edu/>
- Select “Enroll.”
- Choose “Alternative Login.”
- Under “Select Login Method” choose “Other Login.”
- Sign up with your public health agency email address.

3. Have point-of-contact register for Zoom-based training through the Canvas site [here](#).

- Register for five, one-hour training sessions.
- Sessions introduce the tool and each financial worksheet.
- Training sessions organized by LPHA size based on jurisdiction population.
- Each session runs from 12:00pm to 1:00pm.
- No limit to the number of staff from your LPHA who can attend training.

Training Session Enrollment Hints

- If you have trouble registering for the Canvas site with the steps on the previous slide, click on this [link](#).
- Once you are enrolled in the course you should be able to register for trainings by accessing the [training schedule](#).



Institute of Public Policy
University of Missouri

Thank You!

Project Contact:

Jill Lucht, MS

FPHSgap@missouri.edu

573-882-8191