



MISSOURI DEPARTMENT OF
**HEALTH &
SENIOR SERVICES**

MEASLES

More than just a rash

Current situation

Vaccine uptake continues to decrease in Missouri, making children more vulnerable to measles.

Updated: April 2025

NEW MADRID COUNTY

The statewide kindergarten exemption rate for the MMR vaccine in 2024 is 5.20%, which is up from 3.50% in 2023.

KINDERGARTEN VACCINATION RATE STATE OF MISSOURI (2024)

90.14%

PRELIMINARY, SELF-REPORTED DATA FOR
STUDENTS WITH TWO DOSES
OF MMR VACCINE

2019 STATE VACCINATION RATE: 94.60%

KINDERGARTEN VACCINATION RATE NEW MADRID COUNTY (2024)

96.09%

PRELIMINARY, SELF-REPORTED DATA FOR
STUDENTS WITH TWO DOSES
OF MMR VACCINE

KINDERGARTEN EXEMPTION RATE NEW MADRID COUNTY (2024)

2.23%

PRELIMINARY, SELF-REPORTED DATA FOR
STUDENTS WITH TWO DOSES
OF MMR VACCINE

What you need to know

1. Measles is a very contagious disease. **One person with measles can easily pass it on to 9 out of 10 people around them who are unvaccinated or do not have natural immunity.**
2. **Measles can be very dangerous, especially for babies and immunocompromised adults, and a significant proportion of measles cases will need hospitalization.** One in 5 infected persons develops pneumonia, which could be fatal. In some cases, a brain infection may occur and result in swelling, brain damage or death.
3. **Herd immunity** is crucial for preventing disease outbreaks in the community and protecting vulnerable populations who cannot receive vaccines. It can be achieved by 95% of a community being fully vaccinated by two doses of the MMR vaccine.
4. Missouri's measles vaccination rate of 90.14% is **too low to protect our kids from outbreaks** based on preliminary school-reported data.
5. Two doses of the MMR vaccine provides **97% lifetime protection against measles.**

Measles Quick Facts



Fever
(103-105°F)



Red Blotchy
Rash



Red Inflamed
Eyes



Runny
Nose

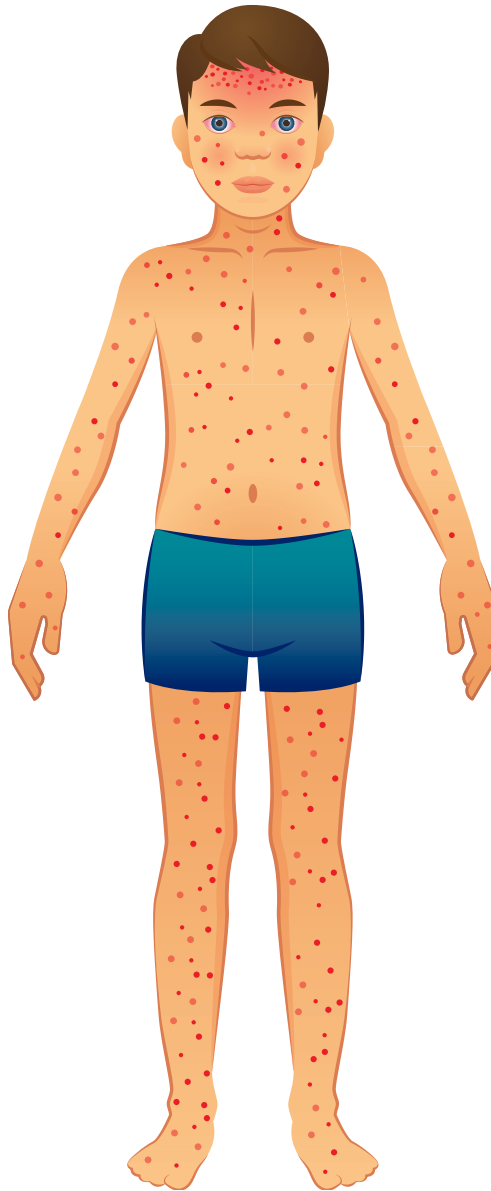


Cough and
Sore Throat



White Spots

Symptoms



- Most measles cases are among preschool children, adolescents and young adults.
 - Anyone who isn't vaccinated is at risk of getting measles, regardless of age.
- Measles symptoms usually appear in two stages, starting 1 – 2 weeks after a person has been exposed to the virus.
 - The first stage starts with a runny nose, cough, a rising fever and eyes may become red and sensitive to light.
 - The second stage begins about 3 – 7 days later and includes a high temperature and a red blotchy rash that begins on the head and works its way down the body.
- A person with measles is **contagious from 4 days before the rash appears until 4 days after the rash appears.**
 - It spreads through the air when a person with measles coughs or sneezes and can live in the air for up to 2 hours.
 - It can also live on surfaces.

Severe Complications



Pneumonia



Severe Diarrhea



Brain Infection



Blindness



Ear Infection

Vaccination: Safe and Effective

Two doses lasts a lifetime, providing 97% protection



Vaccination offers the best protection against measles. Children should be vaccinated against measles at 12 – 15 months old and again at 4 – 6 years old.



Scan for more