



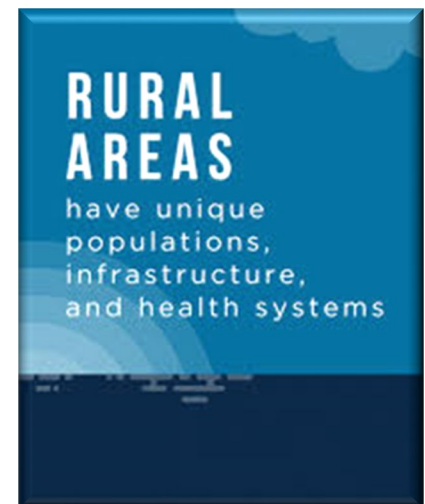
MISSOURI DEPARTMENT OF
**HEALTH &
SENIOR SERVICES**

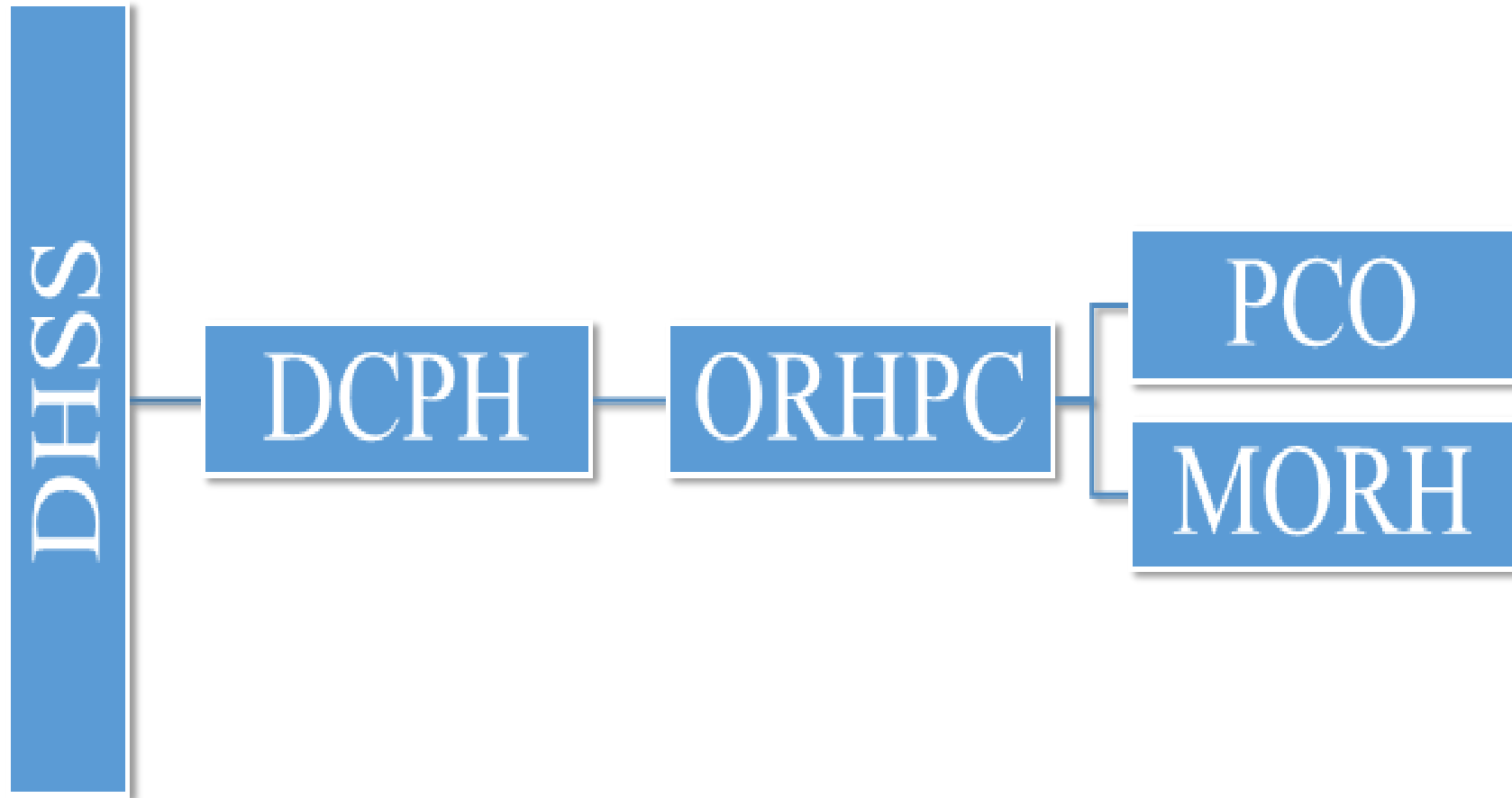
Office of Rural Health and Primary Care (ORHPC)

November 2022

DHSS Aspires to Protect Health and Keep People of Missouri Safe

- ❖ Rural health initiatives to increase access to quality healthcare.
- ❖ Increase the healthcare workforce in healthcare professional shortage areas.
- ❖ Targeting health improvements in rural Missouri.
- ❖ Partnerships to make an impact in rural health.





Staff Representing ORHPC

Missouri Office of Rural Health (MORH)	Missouri Primary Care Office (PCO)	Missouri Student Loan and Loan Repayment Programs
Sara Davenport ORHPC Chief	Sara Davenport ORHPC Chief	Sara Davenport ORHPC Chief
Christen Easter Administrative Office Assistant	Christen Easter Administrative Office Assistant	Christen Easter Administrative Office Assistant
Shirley Murphy Rural Health Manager	Aleesha Jones Primary Care Manager	Aleesha Jones Primary Care Manager
Diana Winder Rural Health Coordinator	Ernest Wilson Workforce Development Manager	Deetarilynn Galbreath Primary Care Coordinator
Vacant Rural Health Coordinator	Ashlee Griffin Primary Care Program Specialist	Nathan James CDC Health Disparities Manager

ORHPC Programs and Grants

Missouri Office of Rural Health (MORH)	Missouri Primary Care Office (PCO)	PCO: Missouri Student Loan and Loan Repayment Programs
State Office of Rural Health (SORH) Grant	Primary Care Office (PCO) Grant	Missouri Student Loan Repayment Program (SLRP) Grant
Small Rural Hospital Improvement Program (SHIP) Grant	J-1 Visa/State 30 Waiver Program	Nurse Student Loan (NSL) Program
Medicare Rural Hospital Flexibility (Flex) Grant Program	National Interest Waiver (NIW) Program	Nurse Loan Repayment Program (NLRP)
<u>One-Time Grants (3):</u> HRSA: SHIP COVID Grant COVID SHIP Testing/Mitigation CDC: Health Disparities	<u>One-Time Grants (2):</u> CDC: ELC Grant CDC: ELC-ED Grant	Primary Care Resource Initiative for Missouri (PRIMO) Program
Contracts: 154	<u>New Programs:</u> Rural Primary Care Physician Grant Program Faculty Preceptors Tax Credit	Contracts: 341

Rural Health Initiatives

- ❖ Identify obstacles and needs faced by health care providers and patients.
- ❖ Maximize the use of existing resources to assist rural hospitals, clinics, and providers in strengthening their rural health care delivery systems.
- ❖ Research, disseminate, and implement innovative health care delivery approaches.
- ❖ Monitor, coordinate, and facilitate rural health efforts and activities.
- ❖ Provide technical assistance to rural health stakeholders.
- ❖ Develop Rural Health Initiatives designed to improve the health of people living in rural areas.
- ❖ Collaborate with partners to implement strategies and create impactful outcomes.
- ❖ Addressing social determinants of health as a primary approach to achieving health equity.
- ❖ <https://health.mo.gov/living/families/ruralhealth/>

MORH Implements Rural Health Initiatives

Addressing the health disparities, access to care problems and deficiencies will require innovative initiatives and collaboration and partnerships.

❖ Efforts include:

- To educate Missouri's youth in rural practice and health professional careers.
- Support schools that offer health professional career training.
- Recruiting and retaining qualified health professionals.
- Improving care models to allow for access utilizing technology, such as telehealth.
- Improving rural residents' ability:
 - ✓ To be educated
 - ✓ Obtain gainful employment and Insurance
 - ✓ Healthier lifestyles
 - ✓ Access Health Care services



MORH Implements Rural Health Initiatives

Addressing the health disparities, access to care problems and deficiencies will require innovative initiatives and collaboration and partnerships.

❖ Efforts include:

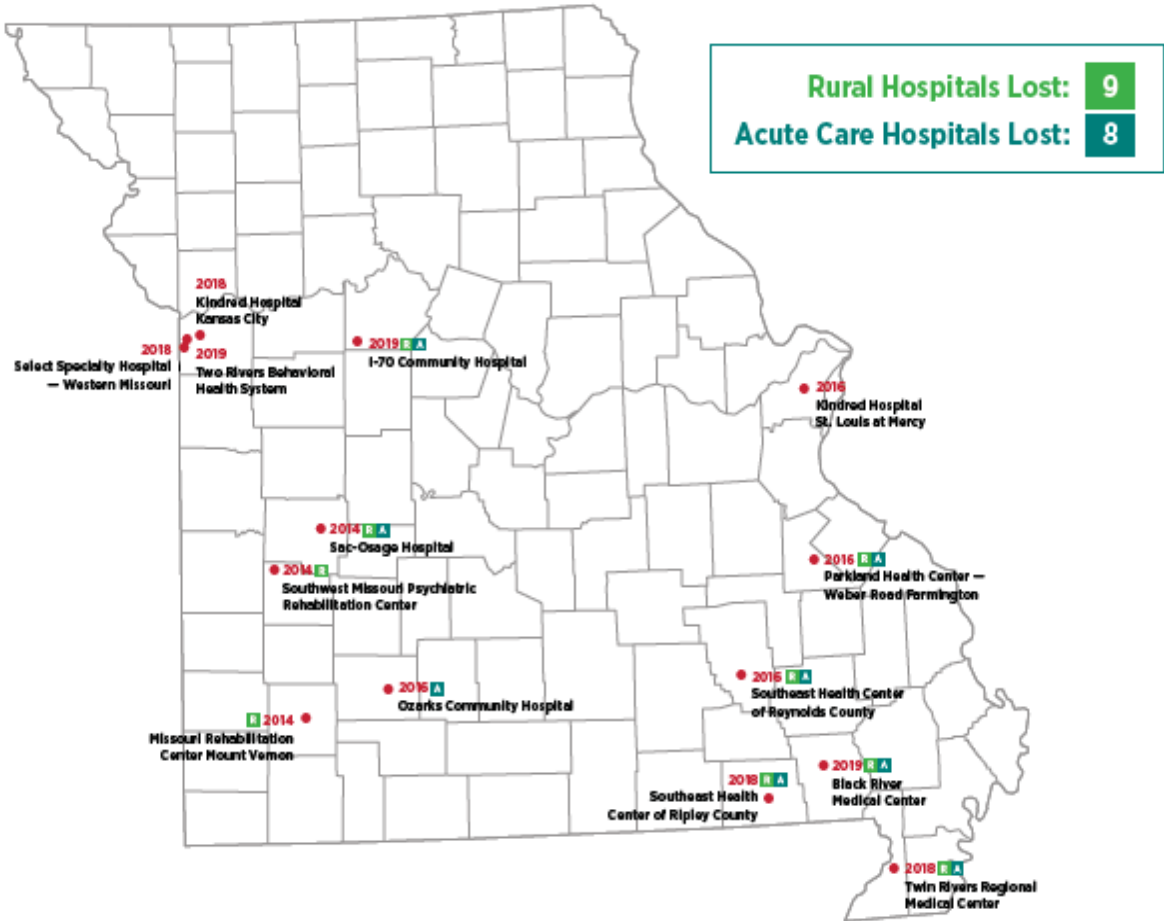
- Assisting Hospitals and Clinics strengthen their operational and financial systems and operations.
- Educate providers on proper billing.
- Enabling a platform of sharing best practices and data and partnerships.
- Building impactful partnerships.

Rural Hospitals

- ❖ 171 licensed hospitals in Missouri: **67 (42%)** are located in rural counties.
- Of the 67:
 - ✓ 62 are hospitals with medical/surgical beds.
 - ✓ 5 are behavioral health hospitals.
 - ✓ 35 are Critical Access Hospitals (CAHs), which have 25 beds or less and provide a limited scope of service. (The additional 4 CAHs are located in non-rural counties).
 - ✓ 47 Small Rural Hospitals (includes the 35 CAHs)

14 Hospital Closures in Missouri

Since 2014



- Southwest Missouri Psychiatric Rehab Center, El Dorado Springs, in 2014 **R**
- Sac-Osage Hospital, Osceola, in 2014 **R A**
- Missouri Rehabilitation Center, Mount Vernon, in 2014 **R**
- Parkland Health Center, Farmington, in 2016 **R A**
- Southeast Health Center of Reynolds County, Ellington, in 2016 **R A**
- Ozarks Community Hospital, Springfield, in 2016 **A**
- Kindred Hospital St. Louis at Mercy, St. Louis, in 2016
- Kindred Hospital Kansas City, in 2018
- Select Specialty Hospital - Western Missouri, Kansas City (non-member), in 2018
- Twin Rivers Regional Medical Center, Kennett, in 2018 **R A**
- Southeast Health Center of Ripley County, Doniphan, in 2018 **R A**
- Two Rivers Behavioral Health System, Kansas City, in 2019
- Black River Medical Center, Poplar Bluff, in 2019 **R A**
- I-70 Community Hospital, Sweet Springs, in 2019 **R A**

The State Office of Rural Health (SORH) Grant

- ❖ Maintaining a clearinghouse for collecting and disseminating information:
 - ✓ Website. Rural Spotlight blog (Rural Health Information Center).
 - ✓ Rural Health Information Hub.
 - ✓ Federal Office of Rural Health Policy Announcement.
 - ✓ Rural Health Research Gateway.
 - ✓ Listserv and email.
- Monitoring/analyzing to drive technical assistance, recommendations and developing rural health strategies.
- Evaluating data/trends to develop initiatives/strategies to improve health.
- Coordinating with partners to support rural health needs and leverage resources for services, activities and programs.

SORH Grant Impacts

- ❖ Provided 25 Letters of Support and 7 partners awarded the grant
 1. Citizens Memorial Hospital Butterfield Park Medical Center: Rural Public Health Workforce Training Network Program
 - Mobile Integrated Health (MIH) Network will offer a Community Paramedic training program.
 2. Citizens Memorial Hospital: Rural Health Network Development Planning Grant
 - Developing a Community Paramedicine Integrative Network and Community Paramedicine.
 3. Delta Area Economic Opportunity Corporation: Rural Public Health Workforce Training Network Program
 - Address health care workforce shortages and lack of coordination of care.

SORH Grant Impacts

4. Great Mines Health Center: Rural Public Health Workforce Training Network Program
 - Address community health workers and community paramedicine workforce shortages.
5. Health Care Collaborative of Rural Missouri: Rural Public Health Workforce Training Network
 - Address health equity gaps in the workforce promoting diversity and inclusion and establishing a stronger community connection through a healthcare career network.
6. Missouri State Alliance of YMCA: Rural Health Network Development Planning Program Grant
 - Develop a sustainable Rural Health Network to address inequities and chronic health outcomes.
7. Sullivan County Memorial Hospital: Rural Health Network Development Planning Program Grant
 - Improve access to healthcare services through partnership with Federally Qualified Health Center.



Biennial Report Current Publication 2020-2021

- ❖ Rural Health Webpage:
<https://health.mo.gov/living/families/ruralhealth/index.php>
- ❖ Rural Health Publications:
 - <https://health.mo.gov/living/families/ruralhealth/publications.php>
 - <https://health.mo.gov/living/families/ruralhealth/pdf/biennial2020.pdf>
- ❖ Biennial Report published every 2 years.
- ❖ Focuses on rural health factors, data and issues that impact the health of Missouri's 2.06 million rural residents.
 - *Demonstrates impacts on Missouri's aging population, chronic disease, Coronavirus Disease 2019 (COVID-19), infant and child mortality, and access to care.*
- ❖ Recommendations to the Governor and General Assembly.

Rural Recruitment and Retention



Rural healthcare workforce shortages, placement, and retention partnerships:

- University of Missouri Medical School Rural Track Pipeline and residency programs:
 - ✓ Identifies medical students from rural Missouri to support their return to their communities. Prepares students for rural practice.
- Successful record of producing physicians for Missouri
 - ✓ 60.6% physicians practicing in Missouri.
 - ✓ 45.5% physicians practicing in Rural Missouri.

Rural Recruitment and Retention



Rural healthcare workforce shortages, placement, and retention partnerships:

- Partnership and Contract with Missouri Primary Care Association (MPCA)
- 3RNet:
 - ✓ National nonprofit network of members matching health care professionals with jobs in rural and underserved health care facilities.

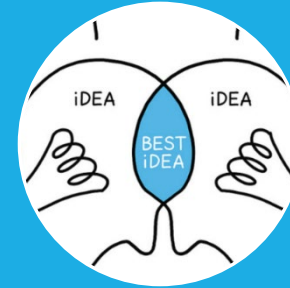
Goals of Small Hospital Improvement Program (SHIP) Grant



Strengthen collaborative efforts with partners and small rural hospitals.



Encourage small rural hospitals to collaborate mutually together to leverage funds.



Platform for continued opportunities for small rural hospitals to share information and mutual ideas.



SHIP Grant

- ❖ The SHIP Grant assists eligible hospitals in meeting the costs of implementing data system requirements established under the Medicare Program, including using funds to assist hospitals in participating in improvements in value and quality to health care such as:
 - Value-Based Purchasing Programs (VBP)
 - Accountable Care Organizations (ACOs)
 - Payment Bundling (PB)
- ❖ <https://health.mo.gov/living/families/ruralhealth/rural-health-hospitals.php>

SHIP Grant

- ❖ Eligible small rural hospitals are located in the United States and its territories and include hospitals with 49 available beds or less.
- ❖ These small rural, non-federal hospitals provide short-term, general acute care to their communities. They may be for-profit, not-for-profit, or tribal organizations. Critical access hospitals are also eligible for the SHIP.
 - <https://health.mo.gov/living/families/ruralhealth/ship.php>.

SHIP Grant Impacts

- ❖ 41 of 47 Small Rural Hospitals participating (33 are CAHs and 8 are small rural hospitals that are not CAHs).
 - Investing in:
 - ✓ 45% Value Based Purchasing activities.
 - ✓ 10% Accountable Care Organization/Shared Savings activities.
 - ✓ 45% Payment Bundling/Prospective Payment System activities improving services to the community.

Medicare Rural Hospital Flexibility Program (FLEX) Grant

- ❖ Training and technical assistance to Critical Access Hospitals (CAH) serving patients in rural communities to reduce the financial vulnerability of rural hospitals and improve access to healthcare by keeping essential services in rural communities.
- ❖ Supports the CAHs to promote quality, operational, and financial improvement processes.
 - <https://health.mo.gov/living/families/ruralhealth/rural-health-hospitals.php>

Medicare Rural Hospital Flexibility Program (FLEX) Grant

- ❖ CAHs encouraged to report on the Medicare Beneficiary Quality Improvement Project (MBQIP)
 - The goal of MBQIP is to improve the quality of care provided in critical access hospitals (CAHs), by increasing quality data reporting by CAHs and then driving quality improvement activities based on the data.
 - ✓ <https://www.ruralcenter.org/tasc/mbqip>
- ❖ The Critical Access Hospital Measurement and Performance Assessment System (CAHMPAS) is a tool that lets you explore Critical Access Hospitals' (CAHs) performance on financial, quality, and community-benefit measures.
 - ✓ <https://cahmpas.flexmonitoring.org/>

Missouri Primary Care Office (PCO) Grant



Strategies

- Designates Missouri Health Professional Shortage Areas (HPSA) and Medically Underserved Areas/Populations (MUA/P).
- Conducts a Statewide Primary Care Needs Assessment (PCNA) completed March 31, 2021.
- Provides technical assistance.
- Recruitment and retention partnerships.
- Increases access to primary health care services.
- <https://health.mo.gov/living/families/primarycare/>

Primary Care Office and Publications

- ❖ Primary Care webpage:

- ✓ <https://health.mo.gov/living/families/primarycare/index.php>

- ❖ Publications:

- ✓ <https://health.mo.gov/living/families/primarycare/publications.php>

- ❖ Primary Care Resource Initiative For Missouri (PRIMO) Annual Report:

- ✓ <https://health.mo.gov/living/families/primarycare/primo/pdf/legislative-update2020.pdf>

- ❖ Primary Care Needs Assessment (PCNA) Report:

- ✓ <https://health.mo.gov/living/families/primarycare/pdf/primary-care-needs-assessment-2020.pdf>

PRIMO Annual Report

- ❖ The PRIMO Program focuses on improving health care delivery systems and increasing the number of primary care, dental health, and mental health professionals practicing in Missouri Health Professional Shortage Areas (HPSAs).
- ❖ This report demonstrates the PRIMO budget and activities for each State Fiscal Year.
- ❖ The Primary Care Resource Initiative for Missouri (PRIMO) is a comprehensive program designed to improve healthcare delivery in the State of Missouri.
- ❖ There are four components to PRIMO:
 - ✓ Student Loans
 - ✓ Student Loan Repayment Program (SLRP)
 - ✓ Health Care Delivery System Development
 - ✓ Recruitment/Placement of Health Professionals



Primary Care Needs Assessment (PCNA)

- ❖ 2020 PCNA:
<https://health.mo.gov/living/families/primarycare/publications.php>
- ❖ Every 5 years, we conduct a PCNA:
 - ✓ Identify Missouri communities with the greatest unmet health care needs,
 - ✓ disparities,
 - ✓ health workforce shortages, and
 - ✓ identify the key barriers to accessing primary health care services.



Missouri Primary Care Needs Assessment (PCNA)

2020

Missouri Department of Health and Senior Services

Office of Rural Health and Primary Care

ORHPCinfo@health.mo.gov

www.health.mo.gov/living/families/primarycare/

<https://health.mo.gov/living/families/primarycare/publications.php>



❖ PCNA:

- ✓ Analyzes MO's unmet needs.
- ✓ Analyzes lack of access to health care services.
- ✓ Evaluates resources and services necessary to overcome disparities in MO.
- ✓ Examines 33 primary care health indicators.
- ✓ Recommends changes to meet those unmet needs.

PCNA Summary of Findings

- ❖ Southern part of Missouri: *southeast and south central areas* have the greatest unmet health needs.
- ❖ 22 of the 23 Missouri counties with the greatest unmet health care needs were located south of the Missouri River.
 - ✓ Only one county (Linn) was located north of the Missouri River, in the northeastern region
 - ✓ This is consistent with the findings of the 2015 Missouri PCNA, demonstrating nominal changes since 2015.

PCNA Summary of Findings

- ❖ Health Resources and Services Administration (HRSA) has designated most of Missouri as a Primary Care Health Professional Shortage Area (HPSA) in medical, dental, and mental health disciplines.
- ❖ Rural counties were consistently identified as the counties ranked with the greatest unmet needs in all but one health indicator.
 - ✓ The HIV/AIDS health indicator demonstrated that urban counties were ranked with the greatest unmet needs but comparatively four of the ten counties were rural.



Statewide Rational Service Area Plan

- ❖ PCNA: utilized to create the Statewide Rational Service Area (SRSA) Plan.
 - The PCNA assesses the needs of the state, and that analysis in turn assists the PCO with developing the Statewide Rational Service Area plan.
- ❖ SRSA: Outlines/maps out the rational service areas (RSAs) in MO.
 - PCO utilizes the SRA to assist in designating the HPSAs.
- ❖ RSA: An area within which most area residents could or do seek and obtain most of their health care services.

Missouri Area Health Education Center (MAHEC)

- ❖ In FY22:
 - 124 undergraduate and high school pipeline students participated MAHEC health careers orientation, exploration, and preparation programming.
 - 65 MAHEC participants began residencies in Missouri, 41 of them in primary care.
 - 85 health care profession students participated in AHEC Scholars Program. A program that prepares them to provide care to rural and urban underserved Missourians.
 - 49 clinical training students completed clinical rotations at 32 training sites
 - ✓ 26 = rural settings and 6 = urban settings.
 - ✓ 41 in primary care disciplines.

What is a Health Professional Shortage Area (HPSA) ?

- ❖ <https://bhw.hrsa.gov/workforce-shortage-areas/shortage-designation>
- ❖ A shortage of health care professionals:
 - Geographic area, Population group or Facility.
- ❖ HPSA designation criteria development by the Health Resource Administration (HRSA).
- ❖ Health care provider shortages:
 - Primary Care, Dental Health or Mental Health.
 - HPSA scores (higher the score the greater the need):
 - ✓ 0-25: Primary Care/Mental Health; 0-26: Dental health.

Primary
HealthCare



HPSA Designations

- ❖ Missouri does not have any counties without at least 1 type of HPSA.
 - ✓ Primary Care
 - ✓ Dental Care
 - ✓ Mental Health
- ❖ Total of 9,020 primary care, mental health, and dental health providers.
 - ✓ 2,036 (23%) practice in rural counties.
- ❖ 34% of Missouri's total population lives in rural areas.
- ❖ More providers practice in urban areas.
 - ✓ 77% provide services to the 66% urban residents.
- ❖ This deficit and difference further demonstrates and necessitates programs and recruitment and retention efforts to increase the number of providers practicing in rural areas.

	Rural	Urban	Total
Primary Care	1335	4355	5690
Dental Health	550	1797	2347
Mental Health	145	838	983
Total	2036	6984	9020

HPSA Designations

- ❖ 80 of the 102 Primary Care HPSAs in rural areas.
- ❖ 17 of the 24 Mental Health HPSAs in rural areas.
- ❖ 77 of the 92 Dental Health HPSAs in rural areas.



J-1 Visa/State 30 Waiver Program

- ❖ Allows a foreign medical graduate to attend an advanced training program in the United States.
- ❖ Waives the two-year home residency requirement for graduates to return to their native country.
- ❖ The physician's waiver is granted in exchange for an obligation to provide health care services for three years in an Missouri HPSA.
- ❖ <https://health.mo.gov/living/families/primarycare/j1visa/index.php>



J-1 Visa/State 30 Waiver Program

Fiscal Year	Applications Received	# of Waivers Granted	Serving in Rural Areas	Serving in Underserved Urban Areas
FY19	37	30	7	23
FY20	47	30	6	24
FY21	30	30	4	26
FY22	40	30	5	25

Missouri Health Professional Student Loan and Loan Repayment Programs

- ❖ There are 4 Programs offered through DHSS:
<https://health.mo.gov/living/families/primarycare/hpl-lr/index.php>
 - Designed to increase access to health care in HPSAs.
 - ✓ Recruitment/retention of providers in HPSAs.
 - ✓ Awards student and loan repayment funds to qualified students and providers.
 - ✓ Earn forgiveness by serving at DHSS-approved sites.



Nurse Student Loan (NSL) Program



- ❖ <https://health.mo.gov/living/families/primarycare/healthprofloans/>
- ❖ Competitive state program awards funding for educational expenses:
 - Practical Nursing students (LPN/PN): **\$5,00 one-time award**
 - Professional Nursing Degree Students (ADN, DN, BSN, MSN, APN, DNP): **\$10,000 each academic year.**
- ❖ Forgiveness is earned by providing nursing health care services:
 - Missouri hospital or HPSA; 1-year service agreement, per loan award.
- ❖ State funded:
 - ✓ Nursing Board Professional Registry licensing fees.
 - ✓ Loan recipient defaulted payments and tax intercepts.

Nurse Loan Repayment Program (NLRP)

- ❖ <https://health.mo.gov/living/families/primarycare/loanrepayment/>
- ❖ Competitive state program awards funding for educational loan repayment:
 - Professional Missouri Licensed Nurses (RN): **\$10,000**
 - Advanced Practice Registered Nurses (APRN, NP, CRNA, FNP): **\$20,000**
- ❖ Forgiveness is earned by providing nursing health care services:
 - Missouri hospital or HPSA; 2-year service agreement, per loan award.
- ❖ State funded:
 - ✓ Nursing Board Professional Registry licensing fees.
 - ✓ Loan recipient defaulted payments and tax intercepts.



Student Loan Repayment Program (SLRP) Grant

- ❖ <https://health.mo.gov/living/families/primarycare/loanrepayment/slrp.php>
- ❖ Competitive federal grant awards funding for educational loan repayment.
 - Physicians (MD, DO), Dentists (DDS, DMD), Psychiatrists (MD, DO): **\$50,000**
- ❖ Forgiveness is earned by providing primary care services in a HPSA:
 - HPSA: 2-year service agreement, per loan award.
- ❖ Federal Grant issues funds requiring a dollar-to-dollar (1:1) state funds match.
 - State funds:
 - ✓ Missouri Hospital Association donation.
 - ✓ Loan recipient defaulted payments.
 - ✓ Tax intercepts.

Primary Care Resource Initiative for Missouri (PRIMO)

- ❖ <https://health.mo.gov/living/families/primarycare/primo/>
- ❖ Competitive state program awards funding for educational expenses:
 - Physicians (MD/DO), Dentists (DDS/DMD), Dental Hygienists, Psychiatrists
 - Undergraduate, graduate, post-graduate studies, residency (Physicians).
- ❖ Forgiveness is earned by providing primary care health care services:
 - HPSA; 1-year service agreement, per loan award.
 - State funds:
 - ✓ Missouri Hospital Association donation.
 - ✓ Loan recipient defaulted payments and tax intercepts.



Primary Care Resource Initiative for Missouri (PRIMO)

Amount Per Academic Year	Number of Maximum Loans	Student Status	Degree
\$5,000	Maximum 4 Loans	Full-Time	Undergraduate or Dental Hygienist Students
\$3,000	Maximum 6 Loans	Part-Time	Undergraduate or Dental Hygienist Students
\$25,000	Maximum 4 years of a 4 Year Program or 6 Years of a 6 Year Program	Full-Time	Allopathic or Osteopathic Medical or Dental Program
\$10,000	Maximum 3 Loans	Full-Time	Selected Primary Care Resident Physicians (only MO Residency)

Loan Programs Retention

✓ **Currently Serving**

Program:	NSL: 24	NLRP: 90	SLRP: 51	PRIMO: 12
Rural:	4	53	36	10
Urban:	13	57	23	7

National Health Service Corps (NHSC)



- ❖ Federal program:
 - Recruitment/retention of primary care providers in HPSAs.
- ❖ Awards scholarships and loan repayment:
 - Medical, dental and behavioral health primary care providers.
- ❖ Earn forgiveness by serving at NHSC-approved sites:
 - Outpatient care settings located within HPSAs.
 - Provide treatment regardless of patients' abilities to pay.
 - Accept Medicare and Medicaid and use a sliding fee schedule.
 - <https://nhsc.hrsa.gov/>

COVID Funding: CDC Grants

- ❖ **National Initiative to Address COVID-19 Health Disparities Among Populations at High-Risk and Underserved, Including Racial and Ethnic Minority Populations and Rural Communities Grant:**
- ❖ Provides funding for strategies to improve testing capabilities and other COVID-19 response activities in populations that are at high-risk and underserved, including racial and ethnic minority groups and people living in rural communities. June 1, 2021-May 31, 2023.
- ❖ Address COVID-19 and advance health equity through strategies, interventions, and services that consider systemic barriers and potentially discriminatory practices that have put certain groups at higher risk for diseases like COVID-19 in racial and ethnic minority groups and rural populations.
- ❖ Total Amount of Contractual Funding: \$35,225,892.00 (LPHA: \$17,411,619.84)
 - Number of Contracts: 60
 - Number of LPHA Contracts: 38

Rural Recruitment and Retention



Rural healthcare workforce shortages, placement, and retention partnerships:

- University of Missouri Medical School Rural Track Pipeline and residency programs:
 - ✓ Identifies medical students from rural Missouri to support their return to their communities. Prepares students for rural practice.
- Successful record of producing physicians for Missouri
 - ✓ 63.1% of participants practicing in Missouri of which
 - ✓ 44.9% of those physicians practicing in Rural Missouri.
 - ✓ The MU-RTPP celebrated its 25th anniversary in SFY20.

Rural Recruitment and Retention



Rural healthcare workforce shortages, placement, and retention partnerships:

- Partnership with Missouri Primary Care Association (MPCA)
- 3RNet:
 - ✓ National nonprofit network of members matching health care professionals with jobs in rural and underserved health care facilities.
 - ✓ Joni Adamson, CPRP

Director of Recruitment and Workforce Development

Missouri Health Professional Placement Services (MHPPS)

(573) 636-4222 email: jadamson@mo-pca.org.

**SFY20 and SFY21 Practice Sites Opportunity Data
Health Professional Employment Opportunities Posted**

Opportunity Specialty	State Fiscal Year 2020	State Fiscal Year 2021	Total
Family Medicine	99	212	311
Internal Medicine	19	36	55
Internal Medicine & Pediatrics	10	16	26
OB-GYN	11	32	43
Pediatrician	17	18	35
Advanced Practice Nurse	24	24	48
Physician Assistant	4	0	4
Dental Hygiene	6	22	28
Dentist	73	101	174
Psychiatry	21	30	51
Other Mental Health Professional	11	46	57
Other Physician	40	68	108
Pharmacist	0	0	0
Totals	335	605	940

**SFY20 and SFY21 Practice Sites Placement Data
Health Professionals Placed in Missouri Health Care Facilities**

Opportunity Specialty	State Fiscal Year 2020	State Fiscal Year 2021	Total
Family Medicine	1	3	4
Advanced Practice Nurse	1	1	2
Dentist	8	6	14
Totals	10	10	20

**SFY22 Practice Sites Opportunity Data
Health Professional Employment Opportunities Posted**

Opportunity Specialty	SFY 2022
Family Medicine	192
Internal Medicine	44
Internal Medicine & Pediatrics	4
OB/GYN	44
Pediatrician	30
Advanced Practice Nurse	54
Registered Nurse	9
Licensed Practical Nurse	8
Physician Assistant	5
Medical Assistant	6
Medical Technician	5
Dental Hygiene	45
Dentist	137
Dentist - Pediatrics	4
Dental Technician	8
Dental Assistant	1
Psychiatry	42
Other Mental Health Professional	43
Other Physician	91
Pharmacy Tech.	6
Administrative	56
Totals	834

**SFY22 Practice Sites Placement Data
Health Professionals Placed in Missouri Health Care Facilities**

Opportunity Specialty	SFY 2022
Family Medicine, Physician	3
Family Medicine, Advanced Practice Nurse	1
Family Medicine, Resident	1
General Dentist	5
Totals	10

Additional Resources

- Nicole Cope, Executive Director: ncope@moimmunize.com
www.moimmunize.org
- The Rural Health Info Center (The Blog/Rural Spotlight):
<https://ruralhealthinfocenter.health.mo.gov/>
- Rural Health Information Hub: <https://www.ruralhealthinfo.org/>.



Missouri State Funding Opportunities

- ❖ State funding opportunities are posted on the Missouri Buys webpage:
<https://missouribuys.mo.gov/bidboard>
 - To apply for a State funding opportunity, follow step-by-step instructions for submitting bids: <https://missouribuys.mo.gov/media/pdf/online-bid-response-instructions>
 - Not limited to just DHSS opportunities.
 - Filter the search by bid type, commodities, and the state agency.
- ❖ Additional funding opportunities posted on the DHSS Invitation for Bids or Proposals webpage:
<https://health.mo.gov/information/publicnotices/invitations/index.php>
 - Follow the directions associated with the funding opportunity you select.

Contact ORHPC

Office of Rural Health and Primary Care
Missouri Department of Health and Senior Services
PO Box 570
Jefferson City, MO 65102-0570

Telephone: 573-751-6441 or
(toll-free) 800-891-7415
Fax: 573-522-8146

Email: ORHPCinfo@health.mo.gov
DHSS.LoanRepayment@health.mo.gov

Webpages: <https://health.mo.gov/living/families/ruralhealth/index.php>
<https://health.mo.gov/living/families/primarycare/>