



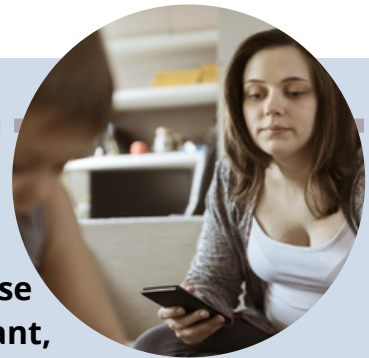
Missouri Title V Facts: **Substance Use**

BACKGROUND

Substance use refers to the act of engaging in the harmful or hazardous use of psychoactive substances which include alcohol, tobacco, and prescription/illicit drugs. The repeated use of these substances can cause someone to develop a dependence syndrome – often leading to an increased desire to continue using the substance and a difficulty in controlling its use. Often, substance use disorders occur in combination with other mental health conditions, such as depression, anxiety, schizophrenia, or bipolar disorder. This may be because certain mental health conditions can affect a person’s decision-making process or have an effect in changing someone’s mood or behaviors.² It is believed that smoking is one of the reason why people with mental health disorders experience more physical health problems and tend to die younger than those without mental health disorders.²

SUBSTANCE USE WHILE PREGNANT

Across the United States, 21.4% (59.3 million people) aged 12 and older say they have used an illicit drug in the past year — a statistic primarily driven by marijuana and misuse of prescription pain relievers.³ For women who are pregnant, or who may become pregnant, this is especially important because substance use during pregnancy is associated with fetal growth restriction, stillbirth, and preterm birth. Substance use may also cause problems with neurological development, resulting in hyperactivity or poor cognitive function.⁴ Results from the 2020 National Survey on Drug Use and Health: Women, showed significant increases in substance use, particularly marijuana among young women aged 18-25 . Pregnant women were shown to have an increase in illicit drug use between 2019 and 2020. Daily or almost daily marijuana use increased from 1.7% (36,000) to 2.8% (57,000).⁵



QUICK FACTS - SUBSTANCE USE IN MISSOURI

Figure 3. Youth Substances Estimates. SAMHSA 2018-2019¹⁰

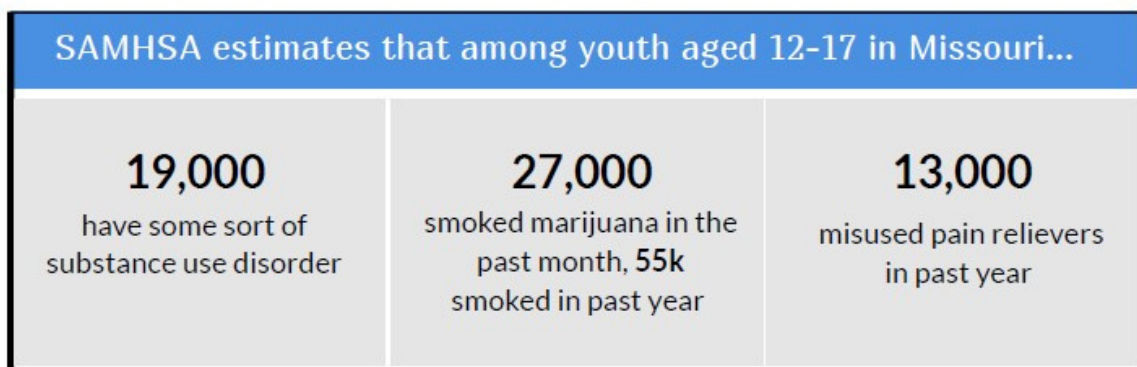
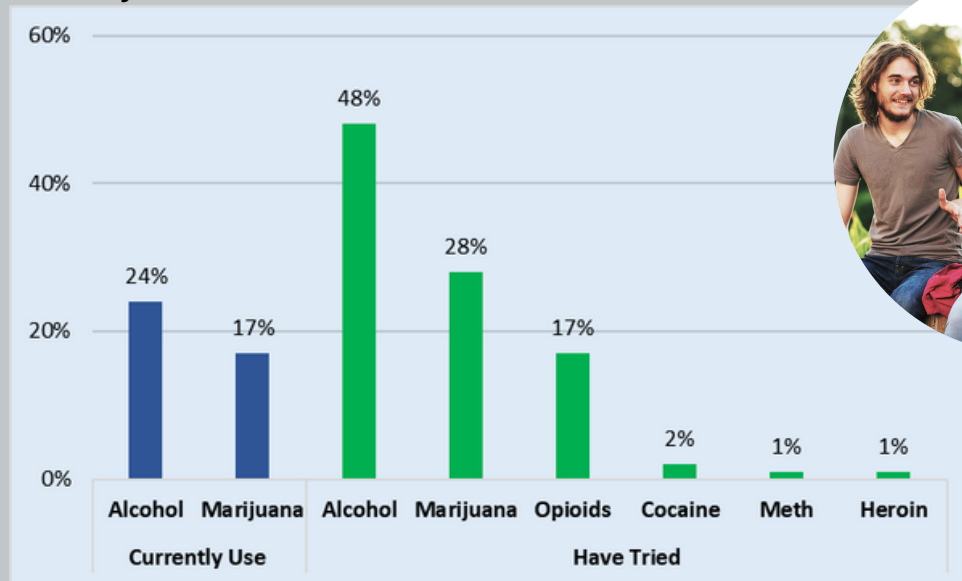


Figure 4. Percent of Missouri High School Students who Currently Use and Have Tried Substances, MO YRBS 2021¹¹



REFERENCES

1. Substance abuse. (2019, November 12). https://www.who.int/topics/substance_abuse/en/. Accessed February 22, 2022.
2. Kalman D, Morissette SB, George TP. Co-morbidity of smoking in patients with psychiatric and substance use disorders. *Am J Addict.* 2005;14(2):106-123.
3. Substance Abuse and Mental Health Services Administration. (2021). Key substance use and mental health indicators in the United States: Results from the 2020 National Survey on Drug Use and Health (HHS Publication No. PEP21-07-01-003, NSDUH Series H-56). Rockville, MD: Center for Behavioral Health Statistics and Quality, Substance Abuse and Mental Health Services Administration. <https://www.samhsa.gov/data/> Accessed February 22, 2022.
4. NIDA. 2022, May 4. Substance Use While Pregnant and Breastfeeding. Retrieved from <https://nida.nih.gov/publications/research-reports/substance-use-in-women/substance-use-while-pregnant-breastfeeding-on-2023>, July 27.
5. Substance Abuse and Mental Health Services Administration. (2020, September). 2020 National Survey on Drug Use and Health: Women. <https://www.samhsa.gov/data/sites/default/files/reports/rpt31102/2019NSDUHWomen/Women%202019%20NSDUH.pdf> Accessed January, 2022.
6. Missouri Department of Health and Senior Services (DHSS), Office of Epidemiology. Pregnancy Risk Assessment Monitoring System, 2019-2021.
7. Missouri Department of Health and Senior Services (DHSS), Office of Epidemiology. Drug Overdose Dashboard accessed from <https://health.mo.gov/data/opioids/index.php>
8. Barfield, W. (n.d.). The Problem of Neonatal Abstinence Syndrome. National Center for Chronic Disease Prevention and Health Promotion. <https://www.cdc.gov/grand-rounds/pp/2016/20160816-presentationneonatal-addiction-H.pdf>.
9. Missouri Department of Health and Senior Services (DHSS), Office of Epidemiology. NAS Dashboard accessed from <https://health.mo.gov/data/opioids/nas.php>
10. 2018-2019 NSDUH State-Specific Tables. (2021, January 28). <https://www.samhsa.gov/data/report/2018-2019-nsduhstate-specific-tables>.
11. Missouri Department of Health and Senior Services (DHSS), Office of Epidemiology. Youth Risk Behavior Survey, 2021.