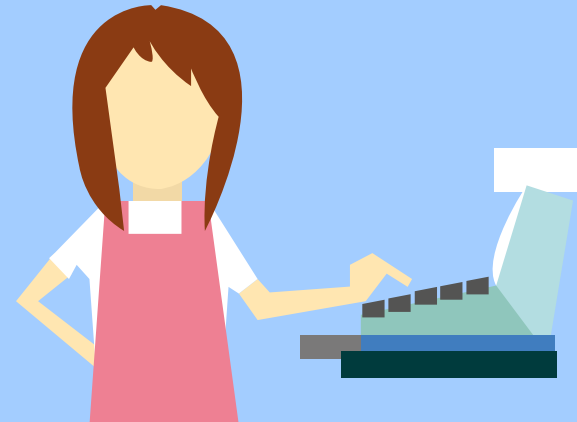


Secondhand Smoke Exposure

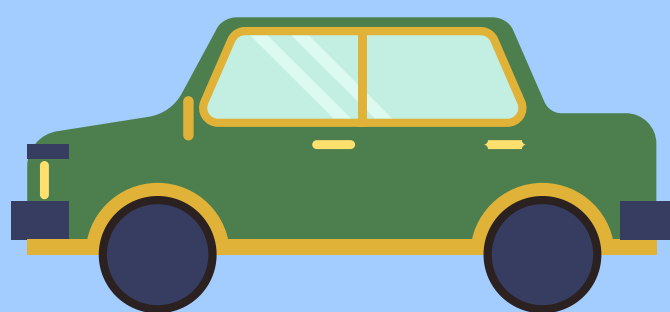
Among Missouri Students



"1 out of 4"
are exposed
while at **home**.



"1 out of 4"
are exposed
while at **work**.



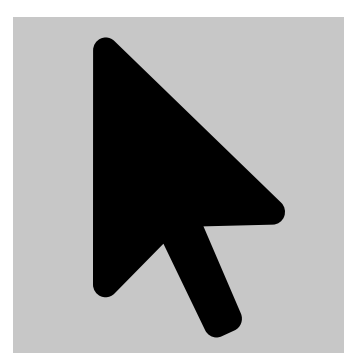
"1 out of 3"
are exposed
while **riding in**
a **car**.



"4 out of 10"
are exposed
while in a
public place.



Call the Missouri
Tobacco Quitline
(1-800-QUIT-NOW)



Go online to
teen.smokefree.gov



Download the
app **quitSTART**