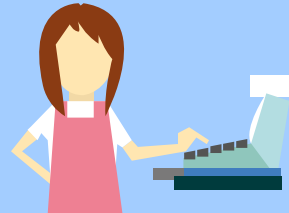


# Secondhand Smoke Exposure

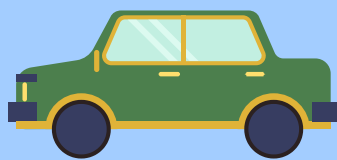
Among Missouri Students



"3 out of 10"  
are exposed  
while at **home**.



"3 out of 10"  
are exposed  
while at **work**.



"3 out of 10"  
are exposed  
while **riding in**  
a **car**.



"5 out of 10"  
are exposed  
while in a  
**public place**.



Call the Missouri  
Tobacco Quitline  
**(1-800-QUIT-NOW)**



Go online to  
**teen.smokefree.gov**



Download the  
app **quitSTART**

