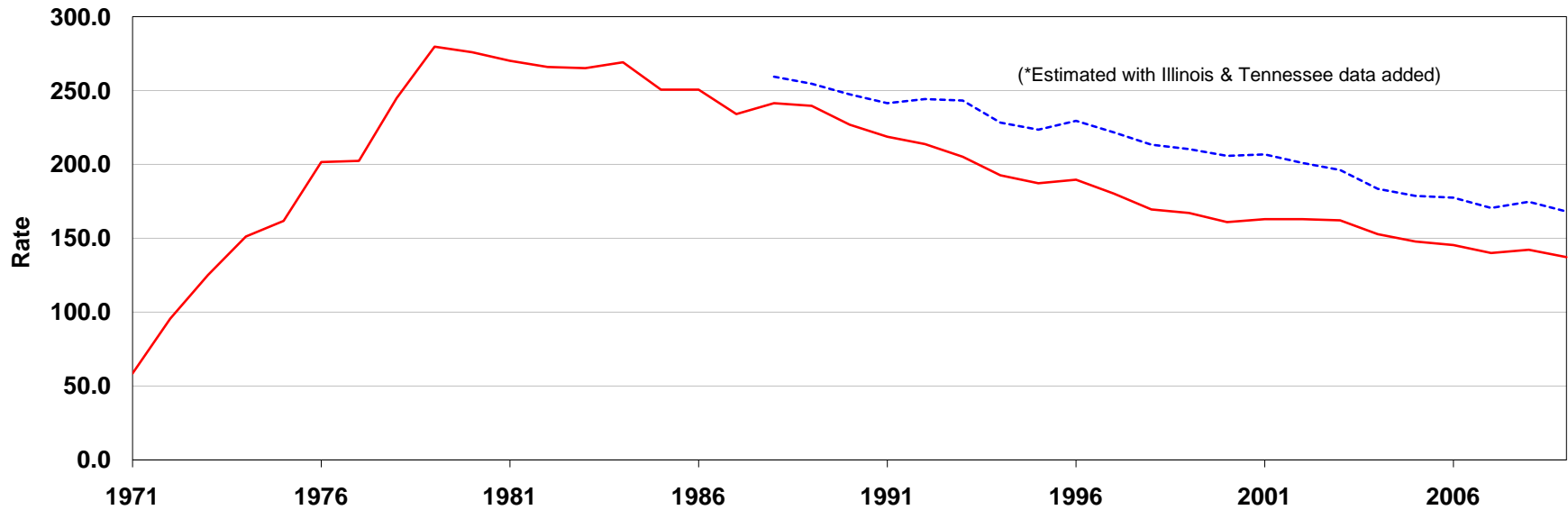


Graph D
Resident Abortion Ratios per 1,000 Live Births
Missouri 1971 - 2009



	<i>Recorded Abortions</i>	<i>Resident Abortions</i>	<i>Resident Abortion Ratio</i>		<i>Recorded Abortions</i>	<i>Resident Abortions</i>	<i>Resident Abortion Ratio</i>		<i>Recorded Abortions</i>	<i>Resident Abortions</i>	<i>Resident Abortion Ratio</i>	<i>Esimated* Resident Abortions Number</i>	<i>Ratio</i>
1971	N/A	4,582	58.5	1984	20,204	20,037	269.2	1997	10,202	13,321	180.2	16,401	221.8
1972	N/A	6,943	95.6	1985	19,482	19,210	250.5	1998	9,089	12,751	169.5	16,051	213.3
1973	N/A	8,589	125.2	1986	19,039	18,824	250.6	1999	8,113	12,600	167.2	15,855	210.4
1974	N/A	10,486	151.1	1987	17,574	17,518	234.1	2000	7,884	12,292	161.0	15,710	205.8
1975	10,245	11,077	161.8	1988	17,382	18,379	241.5	2001	7,797	12,266	162.9	15,559	206.7
1976	12,885	13,869	201.6	1989	17,495	18,639	239.7	2002	8,201	12,250	163.0	15,111	201.0
1977	13,533	14,762	202.3	1990	16,366	17,947	226.8	2003	8,350	12,476	162.1	15,111	196.3
1978	15,546	17,785	244.8	1991	15,473	17,171	218.8	2004	8,072	11,871	152.8	14,259	183.5
1979	17,787	21,267	279.6	1992	13,390	16,240	213.7	2005	7,977	11,619	147.9	14,025	178.6
1980	19,043	21,671	275.8	1993	15,540	15,415	205.1	2006	7,556	11,833	145.5	14,435	177.4
1981	18,604	20,738	270.2	1994	11,879	14,119	192.7	2007	7,324	11,470	140.1	13,963	170.5
1982	19,226	20,380	265.9	1995	11,203	13,635	187.3	2008	7,413	11,508	142.2	14,151	174.8
1983	19,199	20,024	265.2	1996	11,629	13,989	189.7	2009	6,881	10,815	137.2	13,252	168.1

Source: 1971-1974 Centers for Disease Control; 1975-2009 Missouri Department of Health & Senior Services, Bureau of Health Informatics

Graph D Abortion Definitions:

Recorded: Abortions performed in a facility located in Missouri.

Resident: Abortions to Missouri residents regardless of where the abortions occurred as indicated on the individual record level data reports.

*Estimated Resident: Resident Abortions as defined above plus estimated Missouri resident counts from Illinois for 1988-2009 and Tennessee in 1997-2005. See Appendix under Vital Records for more information.