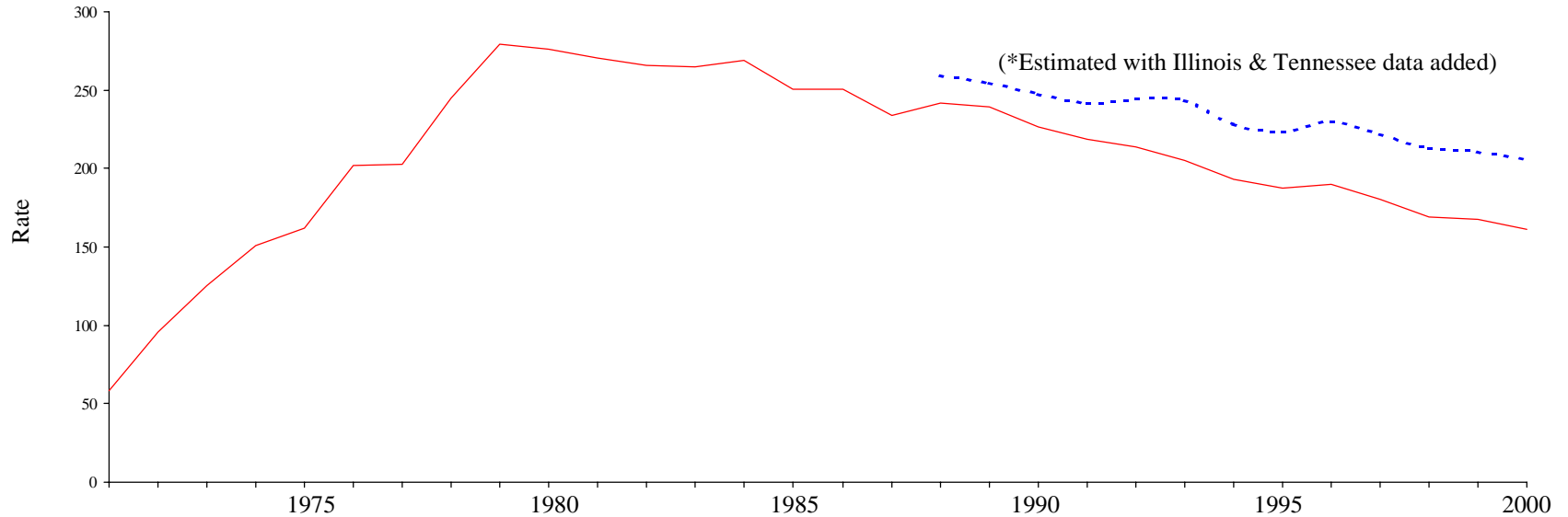


# Graph D

## Resident Abortion Ratios per 1,000 Live Births Missouri 1971 - 2000



<i>Resident</i>				<i>Resident</i>				<i>Resident</i>			<i>Estimated* Resident</i>		
<i>Abortions</i>	<i>Abortions</i>	<i>Ratio</i>		<i>Abortions</i>	<i>Abortions</i>	<i>Ratio</i>		<i>Abortions</i>	<i>Abortions</i>	<i>Ratio</i>	<i>Number</i>	<i>Ratio</i>	
<i>Recorded</i>	<i>Resident</i>	<i>Abortion</i>		<i>Recorded</i>	<i>Resident</i>	<i>Abortion</i>		<i>Recorded</i>	<i>Resident</i>	<i>Abortion</i>	<i>Abortion</i>		
1971	NA	4,582	58.5	1980	19,043	21,671	275.8	1988	17,382	18,379	241.5	19,739	259.4
1972	NA	6,943	95.8	1981	18,604	20,738	270.2	1989	17,495	18,639	239.7	19,792	254.5
1973	NA	8,589	125.2	1982	19,226	20,380	265.9	1990	16,366	17,947	226.8	19,582	247.5
1974	NA	10,486	151.1	1983	19,199	20,024	265.2	1991	15,473	17,171	218.8	18,946	241.4
1975	10,245	11,077	161.8	1984	20,204	20,037	269.2	1992	13,390	16,240	213.7	18,558	244.2
1976	12,885	13,869	201.6	1985	19,482	19,210	250.5	1993	12,540	15,415	205.1	18,277	243.2
1977	13,533	14,762	202.3	1986	19,039	18,824	250.6	1994	11,879	14,119	192.7	16,719	228.2
1978	15,546	17,785	244.8	1987	17,574	17,518	234.1	1995	11,203	13,635	187.3	16,281	223.6
1979	17,787	21,267	279.6					1996	11,629	13,989	189.7	16,923	229.5
								1997	10,202	13,321	180.2	16,401	221.8
								1998	9,089	12,751	169.5	16,051	213.3
								1999	8,113	12,600	167.2	15,855	210.4
								2000	7,884	12,292	161.0	15,710	205.8

Source: 1971-1974 Centers for Disease Control; 1975-2000 Missouri Center for Health Statistics

\*Estimated Resident Abortions include estimates from Illinois clinics for 1988-2000 and Tennessee clinics in 1997-2000.