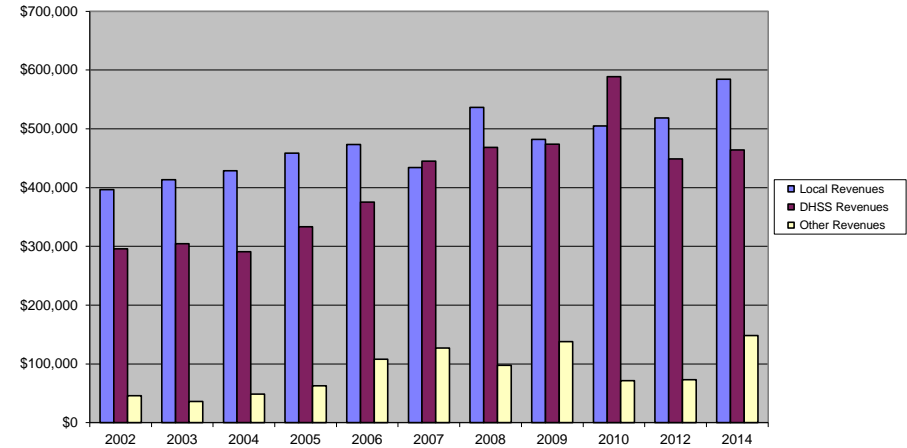


Newton County Health Department

COUNTY Fiscal Year	Revenue Source	Newton 2014	Percent of Agency's Total	Population 50,000-99,999 Ave. Percentage	Statewide 2014 Average Percentage
Beginning Balance		\$466,179			
Local Revenues					
Taxes		\$388,378	32.44%	41.52%	45.54%
Interest		\$371	0.03%	0.13%	0.32%
Vital Records		\$68,620	5.73%	3.64%	3.00%
Donations		\$124	0.01%	0.06%	0.60%
Fees		\$38,877	3.25%	3.45%	4.41%
Other		\$88,307	7.38%	5.80%	5.58%
Total Local Revenues		\$584,678	48.83%	54.60%	59.45%
DHSS Revenues					
Core Public Health	State	\$76,652	6.40%	4.64%	3.78%
Immunizations/Vaccine	State		0.00%	0.00%	0.05%
Immunizations/Vaccine	Federal		0.00%	0.00%	0.33%
MCH	Federal	\$29,605	2.47%	1.62%	1.39%
School Health	State		0.00%	0.00%	0.01%
WIC Administration	Federal	\$298,799	24.96%	14.25%	7.61%
Child Care Inspections	Federal	\$2,325	0.19%	0.19%	0.20%
Child Care Nurse Consultant	Federal	\$1,344	0.11%	0.23%	0.17%
AIDS Funding	Federal		0.00%	1.27%	2.76%
CERT	Federal	\$49,418	4.13%	2.22%	1.99%
BCCCP/Show Me Healthy Women	State		0.00%	0.13%	0.03%
BCCCP/Show Me Healthy Women	Federal		0.00%	0.35%	0.25%
Chronic Disease Prevention	State		0.00%	0.00%	0.00%
Chronic Disease Prevention	Federal	\$0	0.00%	0.04%	0.09%
Worksite Inventory	Federal		0.00%	0.00%	0.00%
Other DHSS	State		0.00%	0.25%	0.41%
Other DHSS	Federal	\$6,130	0.51%	1.41%	2.10%
Other DHSS	Other Sources		0.00%	0.00%	0.01%
Total DHSS Federal		\$387,620	32.37%	21.60%	16.89%
Total DHSS State		\$76,652	6.40%	5.02%	4.31%
Total DHSS Other		\$0	0.00%	0.00%	0.01%
Total DHSS Combined Revenues		\$464,272	38.78%	26.62%	21.22%
Other Revenues					
Medicaid/MC+ (Non-Home Health)		\$42,590	3.56%	4.02%	3.35%
Medicare - (Non-Home Health)		\$0	0.00%	0.38%	0.42%
Family Planning Title X			0.00%	0.25%	0.38%
Other MO Departments (DOC, DESE, etc.)		\$106	0.01%	0.02%	0.05%
Insurance Billing			0.00%	0.00%	0.23%
Other Public Health Revenue					
Total (attach detail)		\$105,688	8.83%	1.31%	7.76%
Home Health (all pymt. sources)			0.00%	3.64%	2.96%
Home Maker (all pymt. sources)			0.00%	0.00%	1.96%
Other Non-Public Health Revenue					
Total (attach detail)			0.00%	9.16%	2.22%
Total Other Revenue		\$148,384	12.39%	18.78%	19.33%
Total Revenue All Sources		\$1,197,334	100.00%	100.00%	100.00%
Expenditures					
Salaries/Wages		\$617,581	55.15%	54.01%	47.94%
Fringe Benefits		\$232,444	20.76%	17.11%	16.07%
Supplies/Equipment		\$38,225	3.41%	4.26%	6.93%
Contracted Services		\$131,019	11.70%	11.84%	17.45%
Travel		\$15,149	1.35%	0.95%	1.10%
Utilities/Rent		\$47,801	4.27%	3.01%	1.95%
Election Costs			0.00%	0.04%	0.01%
Capital Expenditures			0.00%	1.20%	0.91%
Other		\$37,686	3.37%	7.58%	7.63%
Total Expenditures		\$1,119,905	100.00%	100.00%	100.00%
Accrual Adjustment (+ -)		\$95,138			
Ending Balance		\$638,745			
Population		51,847			
Per Capita Public Health Revenue		\$23.09			
Tax Rate		\$0.05			

Newton County Revenue Comparison 2002 - 2010, 2012, 2014



Newton - 2014 DHSS Revenue

