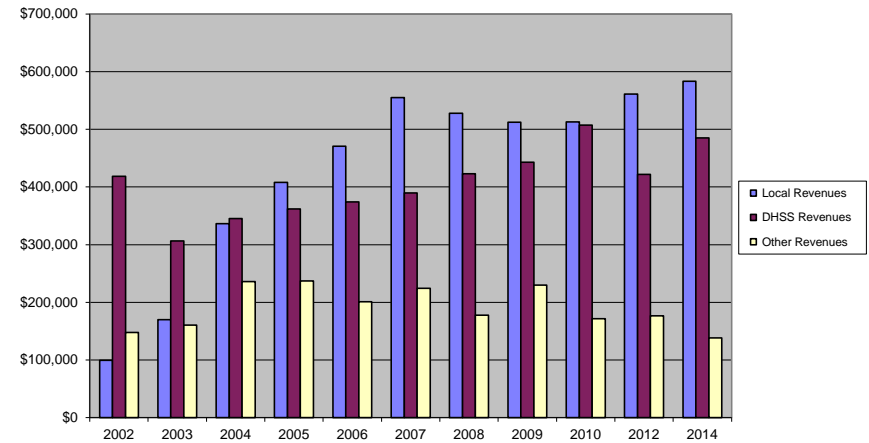


Howell County Health Department

COUNTY Fiscal Year	Revenue Source	Howell 2014	Percent of Agency's Total	Population 25,000-49,999 Ave. Percentage	Statewide 2014 Average Percentage
Beginning Balance		\$687,201			
Local Revenues					
Taxes		\$440,489	36.50%	38.50%	45.54%
Interest		\$9,905	0.82%	0.40%	0.32%
Vital Records		\$54,902	4.55%	3.12%	3.00%
Donations		\$463	0.04%	0.76%	0.60%
Fees			0.00%	3.14%	4.41%
Other		\$77,734	6.44%	2.52%	5.58%
Total Local Revenues		\$583,493	48.35%	48.44%	59.45%
DHSS Revenues					
Core Public Health	State	\$76,209	6.31%	5.17%	3.78%
Immunizations/Vaccine	State		0.00%	0.35%	0.05%
Immunizations/Vaccine	Federal		0.00%	0.38%	0.33%
MCH	Federal	\$29,247	2.42%	2.03%	1.39%
School Health	State		0.00%	0.05%	0.01%
WIC Administration	Federal	\$277,773	23.02%	14.26%	7.61%
Child Care Inspections	Federal	\$2,770	0.23%	0.23%	0.20%
Child Care Nurse Consultant	Federal	\$3,297	0.27%	0.33%	0.17%
AIDS Funding	Federal		0.00%	0.59%	2.76%
CERT	Federal	\$29,397	2.44%	2.47%	1.99%
BCCCP/Show Me Healthy Women	State	\$11,160	0.92%	0.06%	0.03%
BCCCP/Show Me Healthy Women	Federal	\$37,363	3.10%	0.61%	0.25%
Chronic Disease Prevention	State		0.00%	0.00%	0.00%
Chronic Disease Prevention	Federal		0.00%	0.18%	0.09%
Worksite Inventory	Federal		0.00%	0.00%	0.00%
Other DHSS	State	\$990	0.08%	0.16%	0.41%
Other DHSS	Federal	\$16,972	1.41%	1.56%	2.10%
Other DHSS	Other Sources	\$0	0.00%	0.00%	0.01%
Total DHSS Federal		\$396,818	32.88%	22.70%	16.89%
Total DHSS State		\$88,359	7.32%	5.73%	4.31%
Total DHSS Other		\$0	0.00%	0.00%	0.01%
Total DHSS Combined Revenues		\$485,177	40.20%	28.43%	21.22%
Other Revenues					
Medicaid/MC+ (Non-Home Health)		\$95,308	7.90%	3.24%	3.35%
Medicare - (Non-Home Health)		\$501	0.04%	0.64%	0.42%
Family Planning Title X		\$28,471	2.36%	1.34%	0.38%
Other MO Departments (DOC, DESE, etc.)			0.00%	0.10%	0.05%
Insurance Billing		\$12,948	1.07%	0.34%	0.23%
Other Public Health Revenue					
Total (attach detail)		\$1,000	0.08%	4.43%	7.76%
Home Health (all pymt. sources)			0.00%	4.32%	2.96%
Home Maker (all pymt. sources)			0.00%	8.12%	1.96%
Other Non-Public Health Revenue					
Total (attach detail)		\$0	0.00%	0.59%	2.22%
Total Other Revenue		\$138,228	11.45%	23.13%	19.33%
Total Revenue All Sources		\$1,206,899	100.00%	100.00%	100.00%
Expenditures					
Salaries/Wages		\$596,049	58.89%	58.24%	47.94%
Fringe Benefits		\$148,072	14.63%	17.11%	16.07%
Supplies/Equipment		\$24,820	2.45%	8.14%	6.93%
Contracted Services		\$15,105	1.49%	3.67%	17.45%
Travel		\$7,680	0.76%	1.33%	1.10%
Utilities/Rent		\$13,807	1.36%	2.14%	1.95%
Election Costs			0.00%	0.02%	0.01%
Capital Expenditures			0.00%	1.26%	0.91%
Other		\$206,647	20.42%	8.08%	7.63%
Total Expenditures		\$1,012,179	100.00%	100.00%	100.00%
Accrual Adjustment (+ -)					
Ending Balance		\$881,921			
Population		40,393			
Per Capita Public Health Revenue		\$29.88			
Tax Rate		\$0.0995			

Howell County Revenue Comparison 2002- 2010, 2012, 2014



Howell County - 2014 DHSS Revenue

