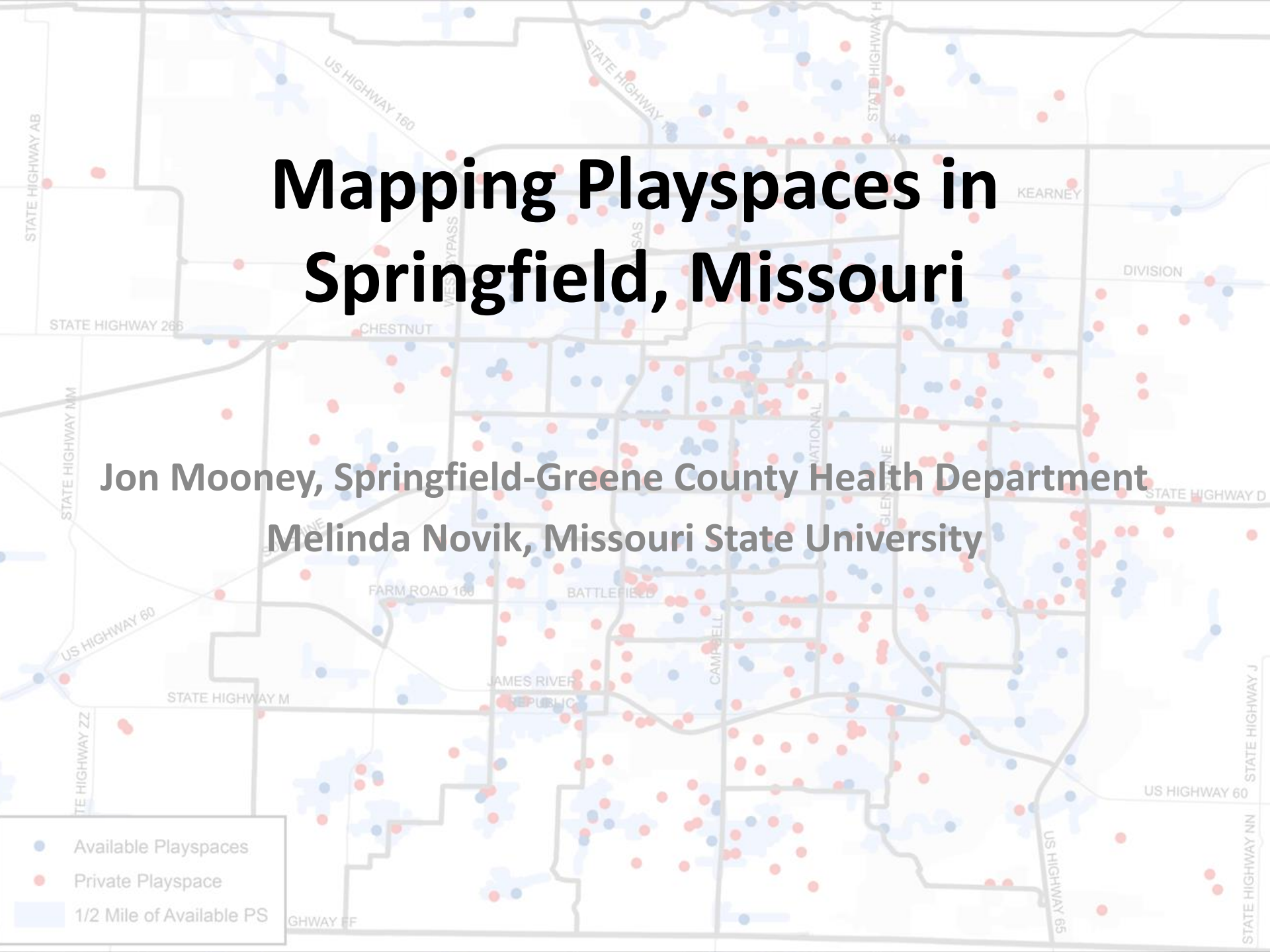


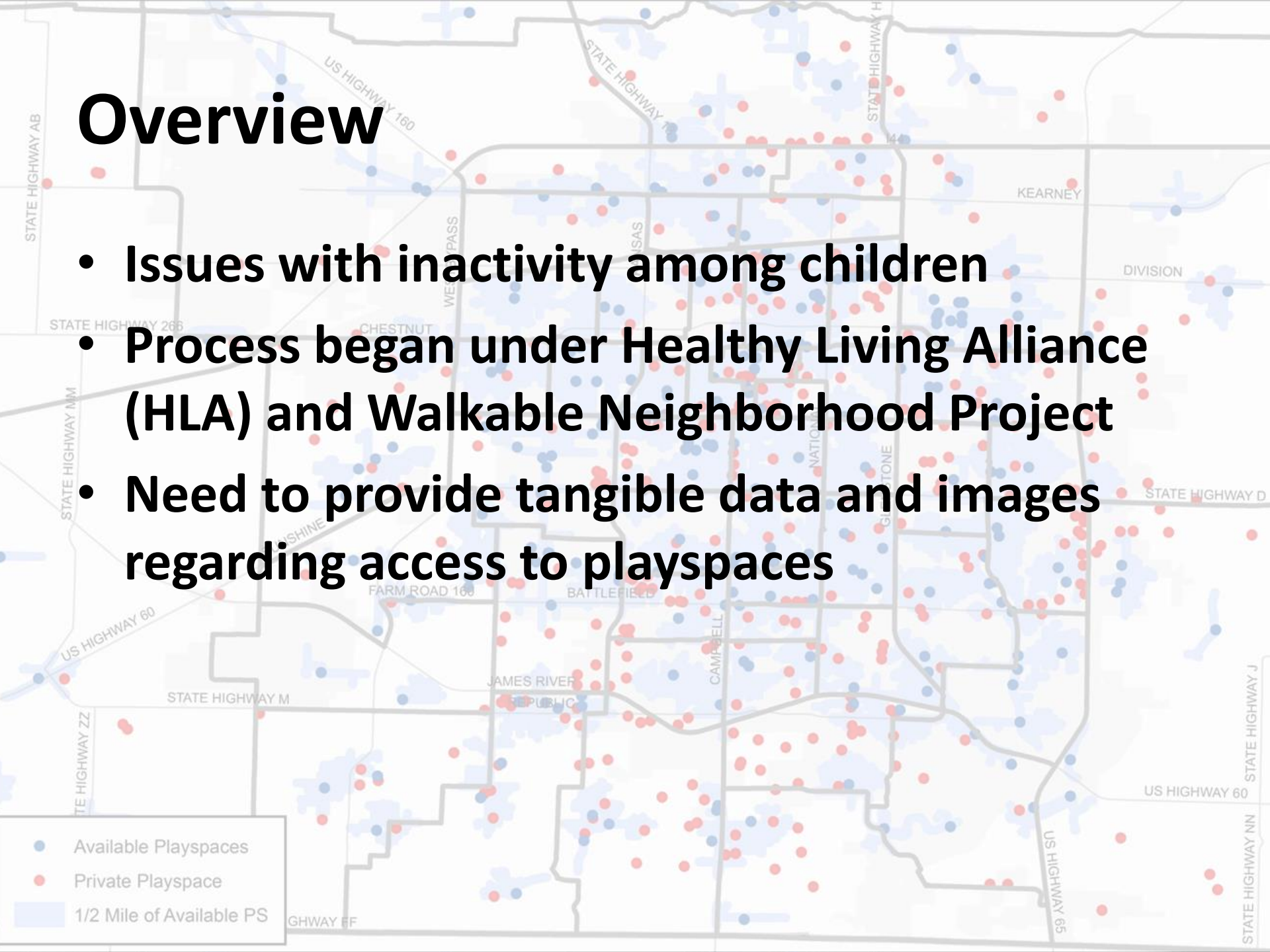
Mapping Playspaces in Springfield, Missouri

Jon Mooney, Springfield-Greene County Health Department
Melinda Novik, Missouri State University



Overview

- **Issues with inactivity among children**
- **Process began under Healthy Living Alliance (HLA) and Walkable Neighborhood Project**
- **Need to provide tangible data and images regarding access to playspaces**



Mapping Process

- **Unit was the census tract**
- **Two staff examined each tract**
- **Categories:** features of playspace, location, trail
- **Classifications:** outdoor/indoor, public/private, open/closed to public, pay/free, hours of operation
- **Programs used:** Google Maps, Google Streetview, ESRI ArcMap, Greene County Assessor

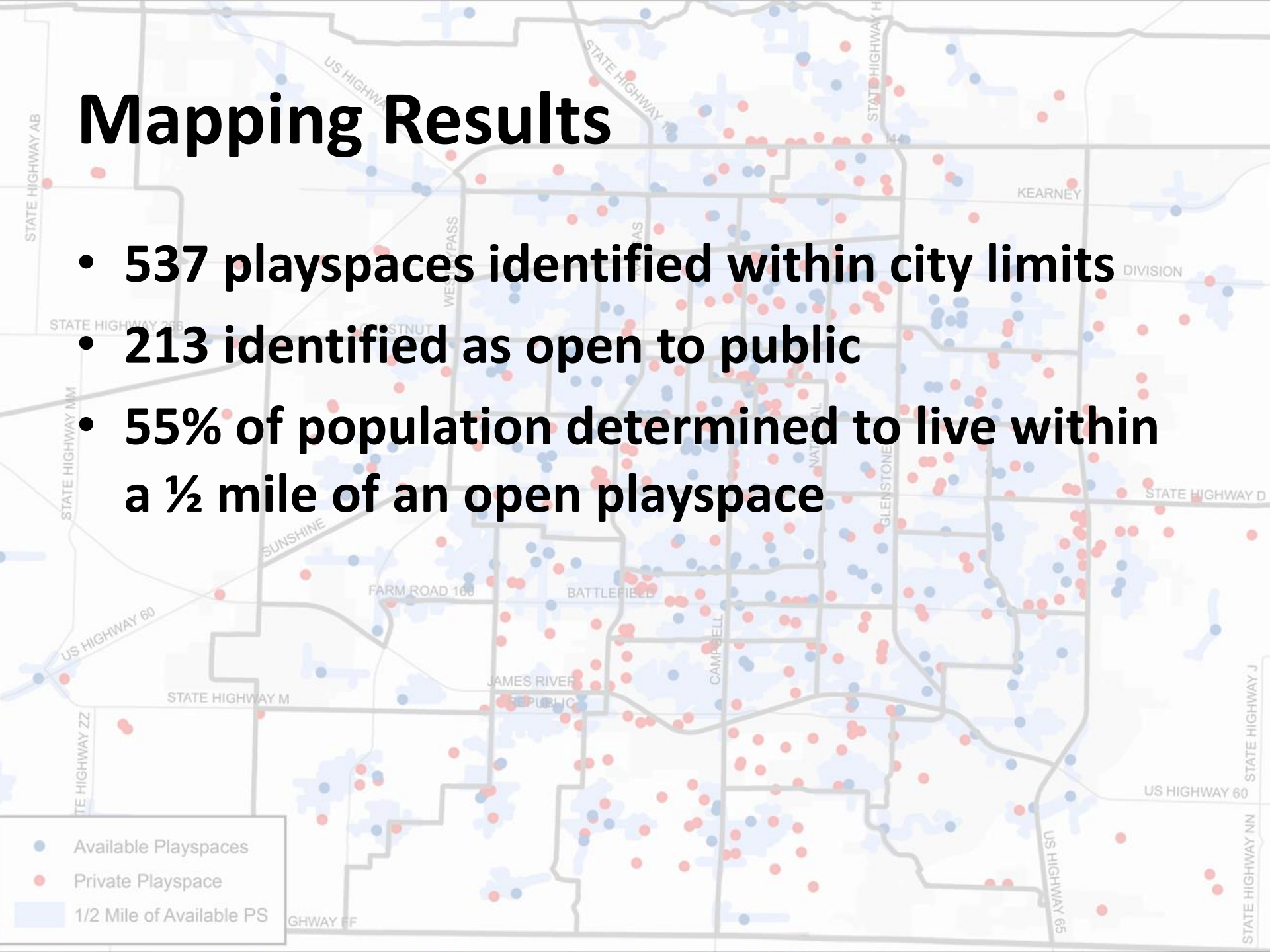
-
- Available Playspaces
 - Private Playspace
 - 1/2 Mile of Available PS

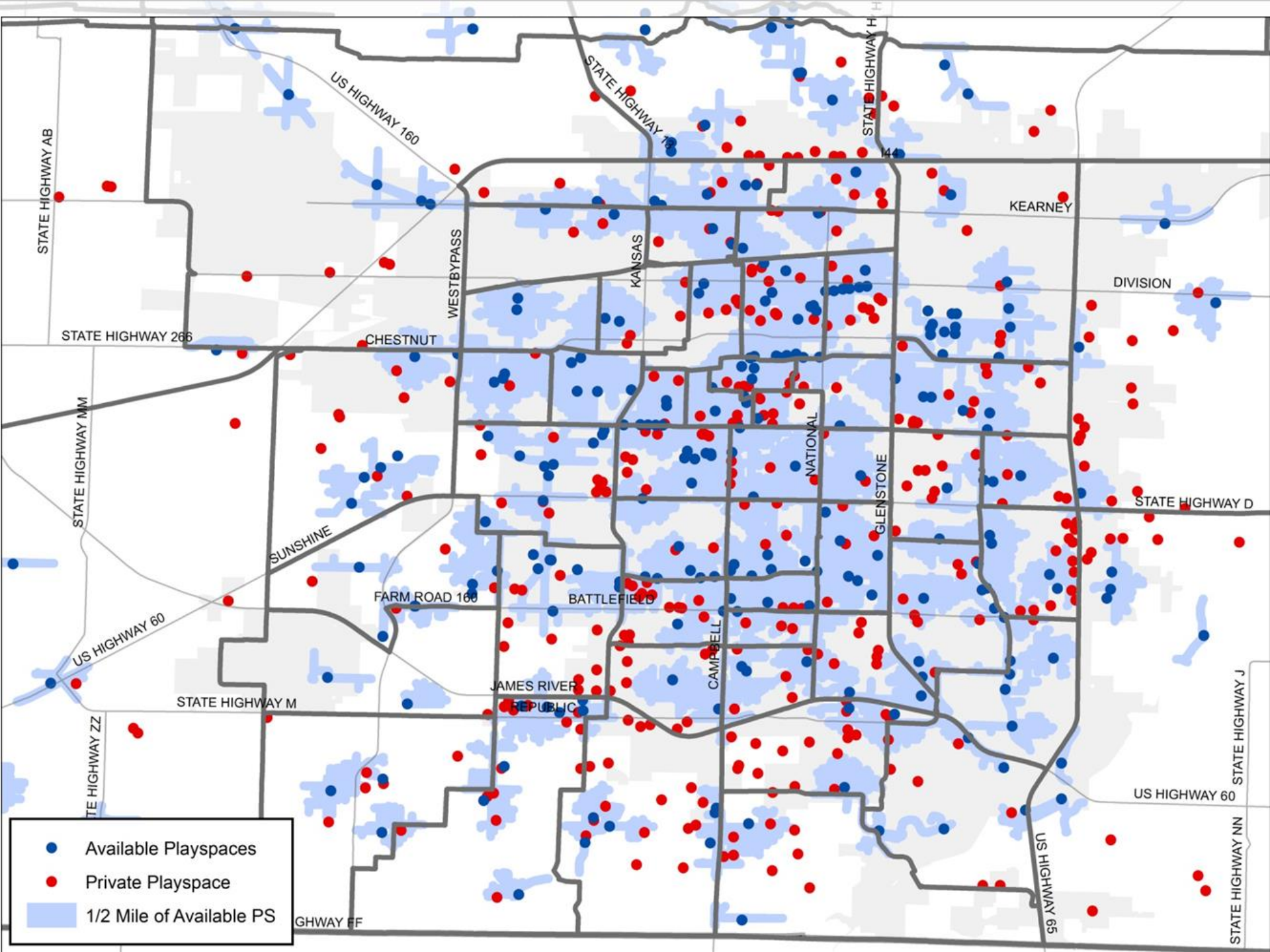
Defining a trail



Mapping Results

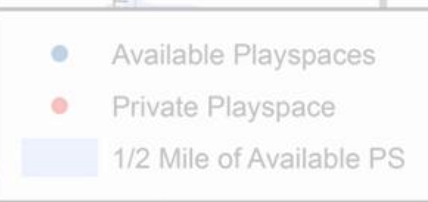
- 537 playspaces identified within city limits
- 213 identified as open to public
- 55% of population determined to live within a ½ mile of an open playspace





Prioritization Process

- Tract by tract
- Maps were color-coded to identify gaps in accessibility
- Examination of those playspaces not turned “on”: *not currently open and free to public*
 - quality of playspace
 - coverage of potential playspaces
 - environmental barriers



Prioritization Results

A map showing the geographic distribution of playspaces. Red dots represent private playspaces, and blue dots represent available playspaces. Light blue shaded areas indicate a 1/2 mile radius around available playspaces. Major roads like State Highways AB, NM, NN, ZZ, 60, 65, and US Highways 60, 65, and 78 are labeled. Neighborhood names like Kearney, Division, and James River are also visible.

- **128 playspaces prioritized**
- **80 received top priority (free, existing playground)**
 - Majority were located on church property
- **Reasons for not prioritizing a playspace**
 - Cost associated with play
 - Playspace affiliated with member/resident facility (ie: apartment complex pool)
 - Unique hours/indoor facility

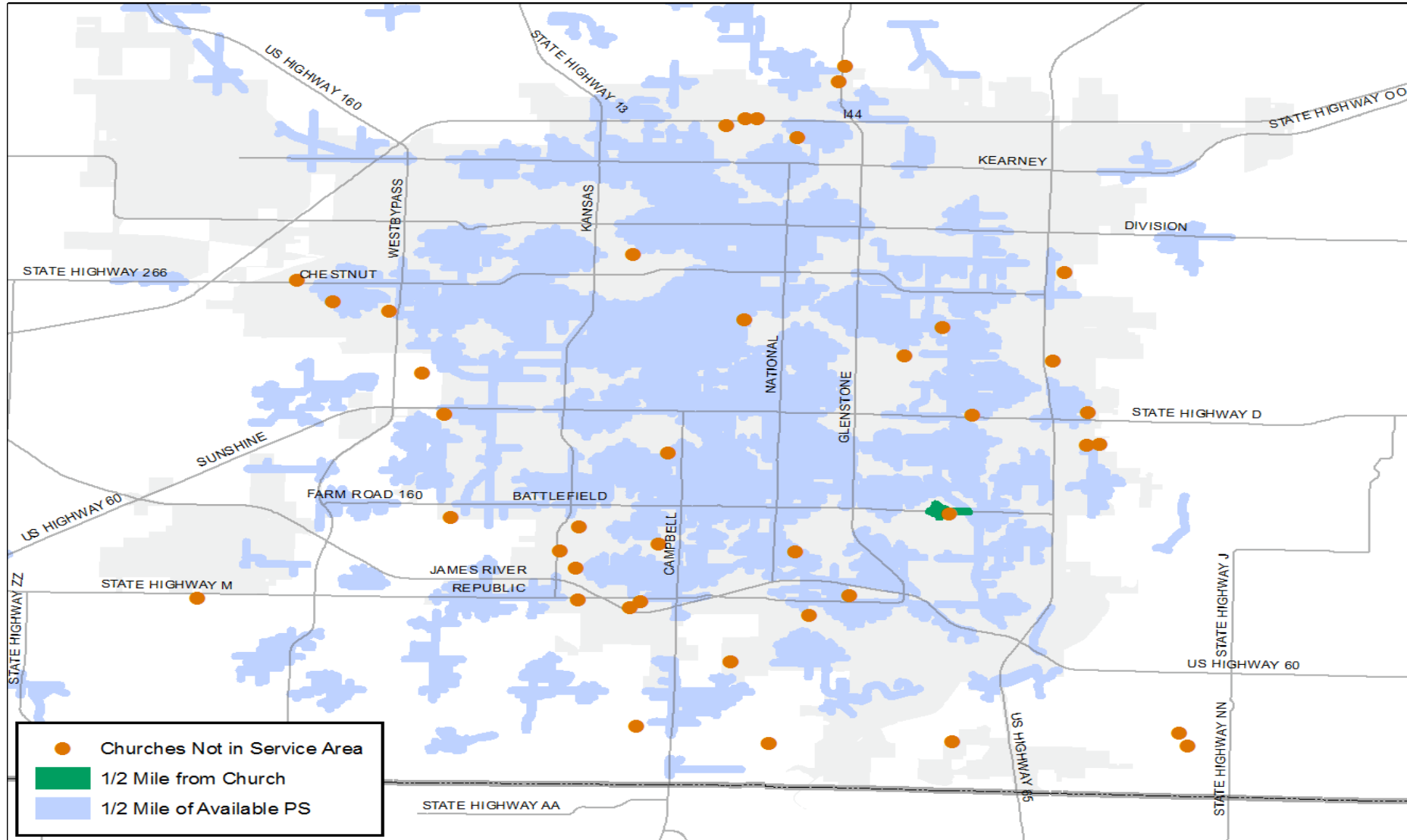
• Available Playspaces
• Private Playspace
• 1/2 Mile of Available PS



Finding a Place to Play

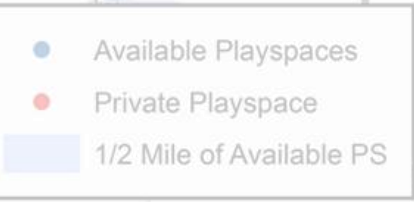
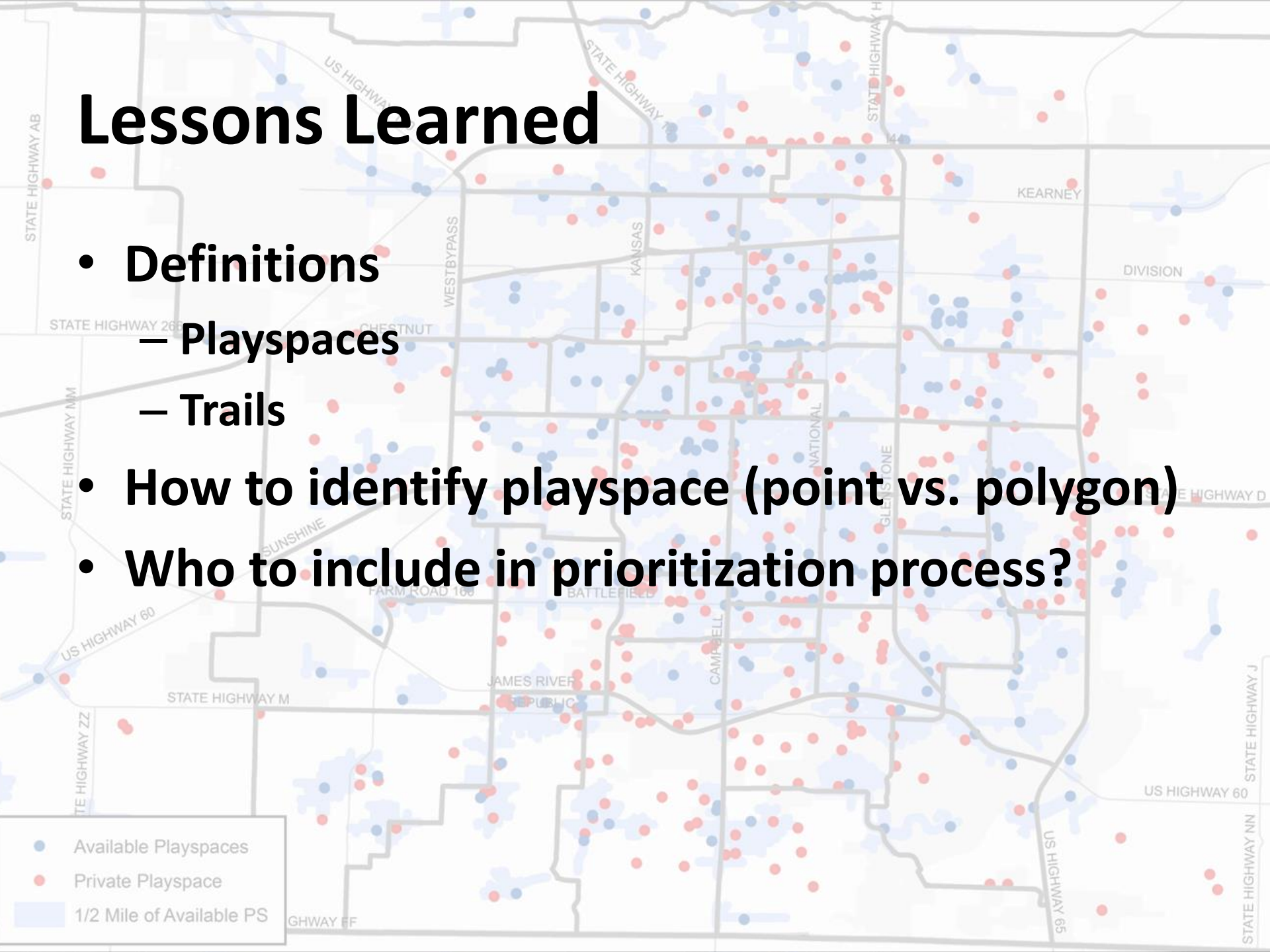


The Impact of Churches



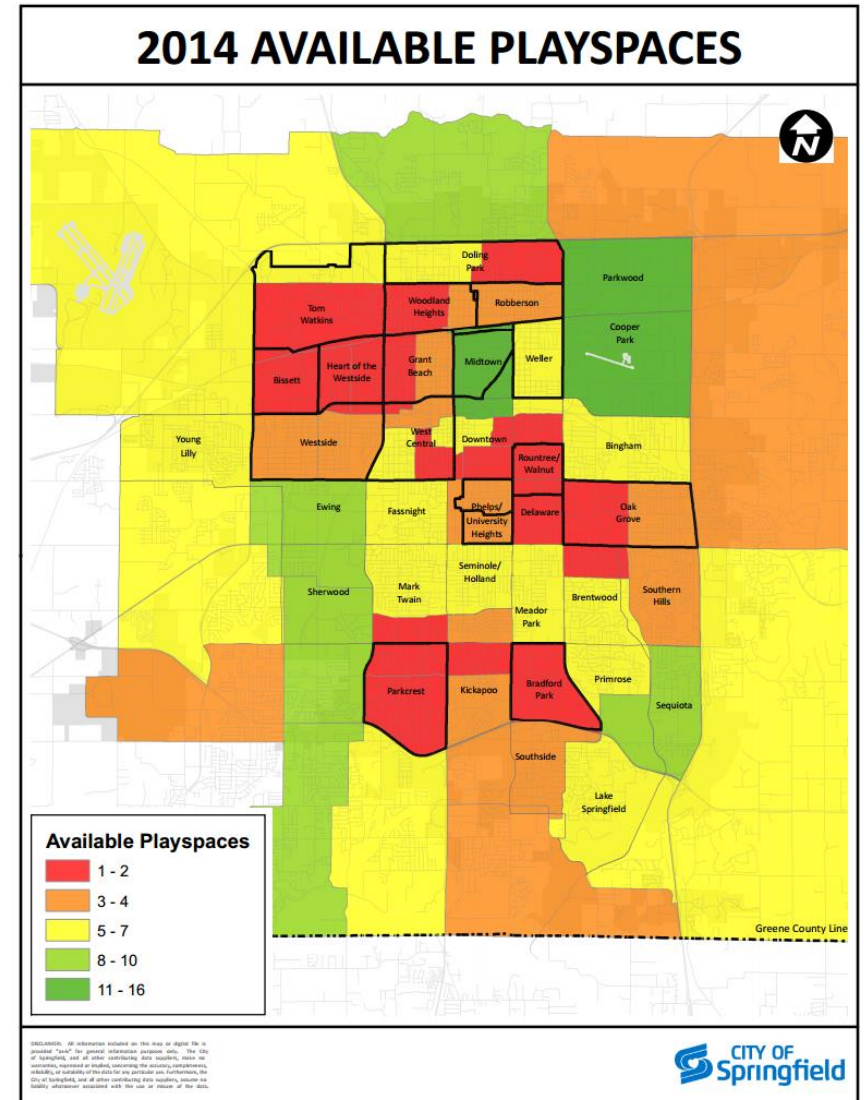
Lessons Learned

- **Definitions**
 - **Playspaces**
 - **Trails**
- **How to identify playspace (point vs. polygon)**
- **Who to include in prioritization process?**



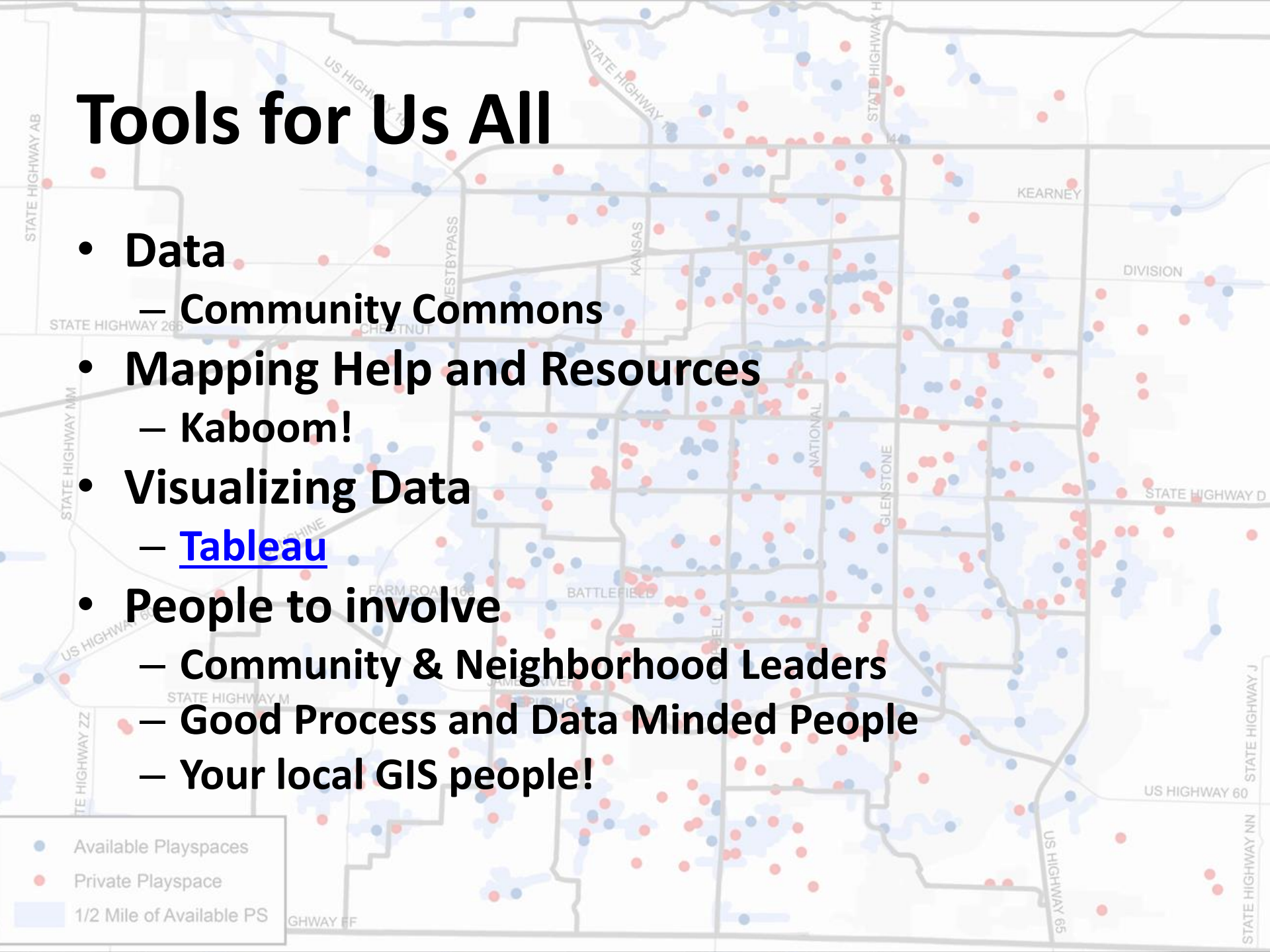
Lessons Learned

- Build the case for the project- at the right time and with the right people



Tools for Us All

- **Data**
 - Community Commons
- **Mapping Help and Resources**
 - Kaboom!
- **Visualizing Data**
 - [Tableau](#)
- **People to involve**
 - Community & Neighborhood Leaders
 - Good Process and Data Minded People
 - Your local GIS people!



Discussion

- What has been done in your communities?
- How would you envision a playspace assessment occurring in your community?
- What opportunities are there in your community to expand access to playspaces?



Questions??

