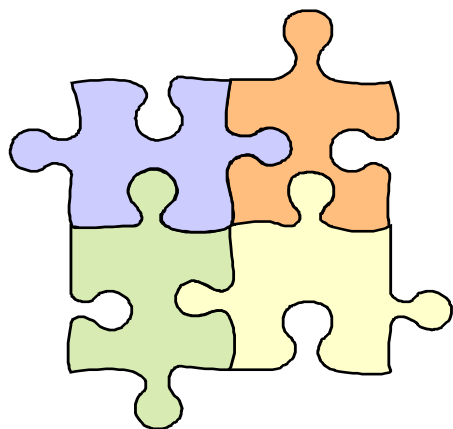


Educational Challenge Program



An exciting educational opportunity is now being offered by the Missouri State Public Health Laboratory. This program will provide challenge surveys designed to exercise a laboratory's protocols for dealing with agents of bioterrorism, as well as other organisms of interest. This program is offered at no charge to sentinel laboratories within Missouri.

Emergency Response, Outreach and Training Unit

Missouri State Public Health Laboratory
101 N. Chestnut Street
Jefferson City, MO 65101

Phone: 573-522-1444
Fax: 573-526-7368

www.health.mo.gov/Lab



SENTINEL LABORATORY PREPAREDNESS

EDUCATIONAL CHALLENGE PROGRAM

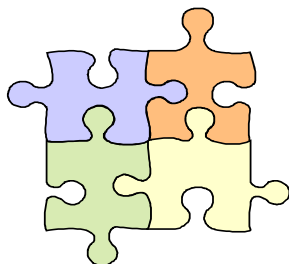
*Utilizing Agents of
Bioterror and Other
Organisms of Interest*



*Emergency Response,
Outreach and Training Unit*

Missouri State Public
Health Laboratory

Sentinel Laboratory Preparedness



Sentinel laboratories are a vital component of Missouri's Laboratory Response Network (MO LRN).

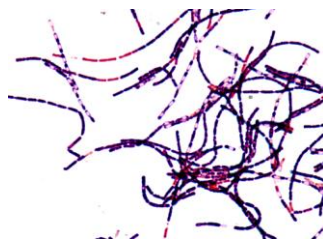
About the Laboratory Response Network (LRN)

The Laboratory Response Network, established by CDC in 1999, is a network of national, reference, and sentinel laboratories. Designation depends on the level of testing performed in the laboratory and how it handles infectious agents. The Missouri LRN (MO LRN) is comprised of the State Public Health Laboratory (Missouri's reference lab) plus 136 sentinel laboratories. **Sentinel labs** represent the thousands of hospital-based labs that are on the "front lines." Sentinel labs have direct contact with patients, and could be the first to spot a suspicious specimen during a covert biological attack. A sentinel laboratory's responsibility is to rule out, using LRN procedures, potential organisms of bioterror and to refer suspicious organisms to the appropriate reference laboratory.

Educational Challenge Program

The Emergency Response and Outreach Team of the Missouri State Public Health Laboratory is offering a series of educational challenges designed to exercise a laboratory's use of LRN procedures in ruling out CDC's "Category A and B Agents," as well as laboratory procedures used to deal with other infectious organisms. **The challenges will not utilize live organisms**, but will be presented, for the most, part in paper format.

Participation in this program will assist sentinel laboratories in ascertaining their level of preparedness in dealing with agents that could pose bioterror threats. The surveys are also useful in support of a laboratory's quality assurance program and as a tool to familiarize new technicians with LRN and routine laboratory procedures. ***These challenges are voluntary and are intended to be fun and educational and as such will not be "graded."***



Bacillus anthracis

Subscription Information

Participation in this program is **free of charge** to Missouri laboratories.

(Facility name)

(Contact person)

(Email)

(Telephone)

(Facility address)

_____, **MO**
(City) _____ (Zip)

Subscribe now to get the next educational challenge survey set for your facility:

- Fill out the attached enrollment form
- Fax form to: (573) 526-7368 **OR**
- Mail form to:

Attn: Emergency Response, Outreach
and Training

MO State Public Health Laboratory

101 N. Chestnut Street

Jefferson City, MO 65101