

# Loading Spatial Data from the State Data Repository

Most spatial data is downloaded from the state data repository at MU. The web site is <http://www.msdis.missouri.edu/datasearch/ThemeList.jsp>.

**Home** Data **On-line Maps** News Services Educational Resources Partners

Search for GIS Data | [Theme List](#) | [MSDIS Dataset List](#) | [ICREST Dataset List](#)

### MSDIS Data Theme Listing

Last Updated: 12/13/2007 08:17:41

Boundaries	Census	Cultural / Historical	GAP Analysis	Landbase / Topo
Natural Resources	Public Facilities	Transportation	Utilities	Imagery

If you are familiar with the Data Set List and would prefer to view it follow this link:  
<http://www.msdis.missouri.edu/data/datasetlist.htm>

If you would prefer to go directly to the FTP site to find and download data go here:  
<ftp://msdis.missouri.edu/pub>

#### USGS Map Boundaries

- 1:24,000 (7.5 Minute Quadrangles) Map Tiles
- 1:100,000 Scale Map Tiles
- 1:250,000 Scale Map Tiles
- State Boundary
- County Boundaries (1:24,000)

#### Boundaries - Administrative

- Schools
  - Public School Districts (Updated 11/2007)
  - Public Schools (Updated 7/2007)
  - Private Schools (Updated 7/2007)
  - Colleges and Universities (new 07/2007)
- Zip Code Boundaries
- Town and County Boundaries
  - County
  - Place / Municipal
- Public Land Net Boundaries (Sections)
- Public Lands
  - Missouri Department of Conservation
  - Missouri Department of Natural Resources
  - National Forest Service

#### Coordinate Grid Systems

National Grid

- National Grid Zones (new 07/2007)
- 1km Grids (new 05/2007)
- 10km Grids (new 07/2007)
- 100km Grids (new 07/2007)

UTM Zone 15 Grid Lines

- 100 meter grid lines (new 05/2007)
- 1km grid lines (new 05/2007)

Data is categorized by subject type. Click on a feature name to see a brief description of the layer.

There may be more than one year's worth of data for a feature and the most current file is not necessarily at the top.

**Displaying 1 - 5 of 5 results.**

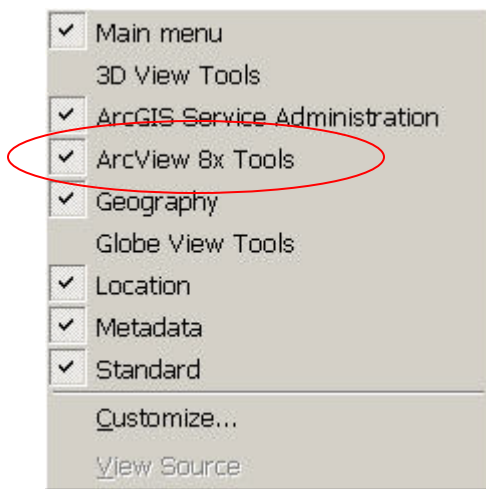
<a href="#">View Metadata</a>	<a href="#">Download Metadata</a>	
2000 School District Boundaries of State of Missouri		Projection Units: UTM
Geo-dataset delineating the boundaries of the school districts of Missouri		
<b>File Size: 4691.0 KB</b>	<b>Download Time: 177.06 sec</b>	<a href="#">Download Data (free)</a>
		<b>OR Add To Cart</b> <b>(30 dollars per CD)</b> <input type="checkbox"/>
<a href="#">View Metadata</a>	<a href="#">Download Metadata</a>	
2002 School District Boundaries of State of Missouri		Projection Units: UTM
Geo-dataset delineating the boundaries of the school districts of Missouri.		
<b>File Size: 5422.0 KB</b>	<b>Download Time: 198.57 sec</b>	<a href="#">Download Data (free)</a>
		<b>OR Add To Cart</b> <b>(30 dollars per CD)</b> <input type="checkbox"/>

Review all the options before making your selection. Select “View Metadata” to get a complete layer description.

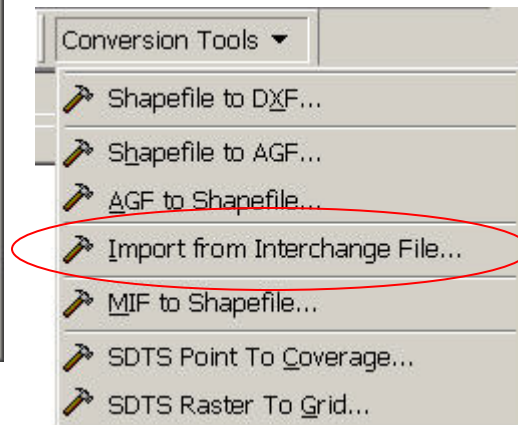
Data downloaded from MSDIS is in ArcInfo interchange format (.e00) and has been zipped.

Extract the e00 file from its ZIP file.

Once the e00 file has been unzipped, import the interchange file to an ArcInfo coverage. Open ArcCatalog. You will need to add the ArcView 8.x Toolbar. Select View > Toolbars > ArcView 8x Tools.



From this toolbar, select Conversion Tools > Import from Interchange file.



Coverages are stored in a folder/file structure. You do not need to create a new folder to use for the import; you can use an existing folder.



The output dataset can (and probably should) have the same name as the input file; just leave off the .e00 extension.

### Metadata

If for some reason the metadata does not get extracted when you import the interchange file, you must download the metadata separately from the data download. When you click the Download Metadata button you may be prompted to:

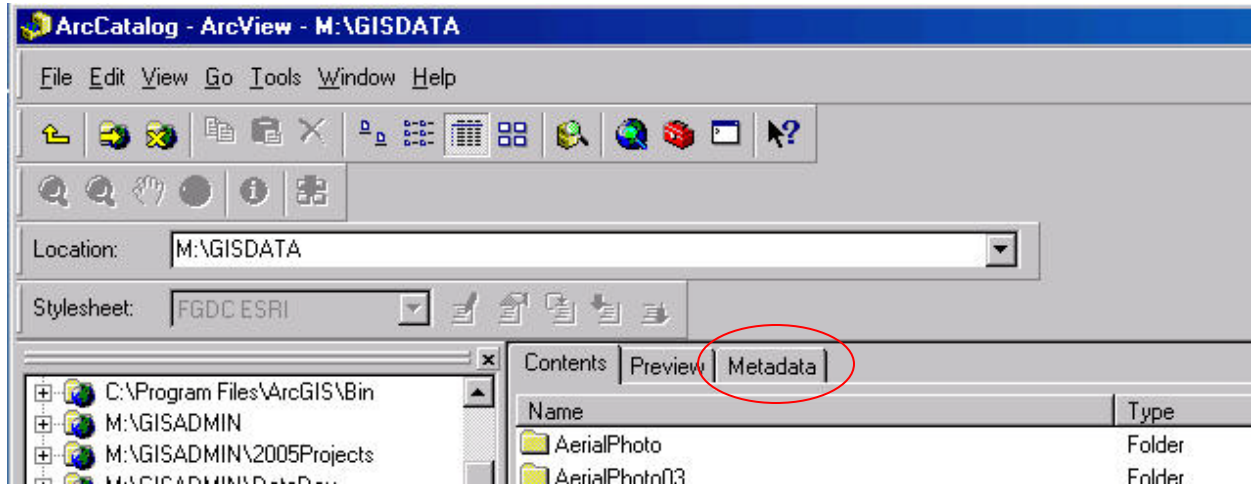


Right click on the link and chose "Save Target As" to download the file.



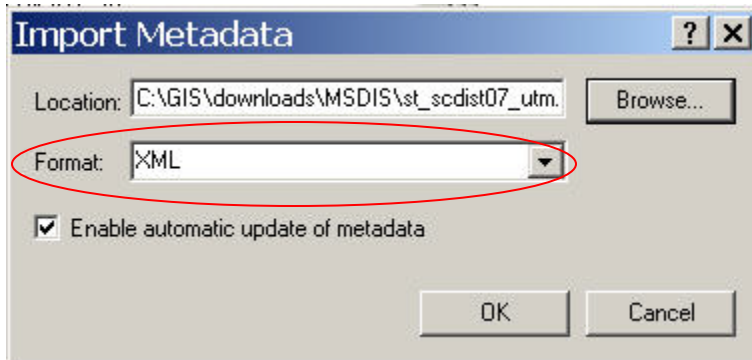
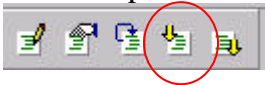
Save the metadata into the same directory you put the coverage.

In ArcCatalog, you must import the metadata file (i.e. st\_schdist07.xml)



Navigate to the folder that contains the coverage and select the Metadata tab.

Use the Import metadata tool.



Make sure to change the format to XML. Browse to the location of the XML file you downloaded.

All data layers should have metadata. If you can't download it, you should attempt to create your own.

*Last Updated 12/13/2007*

*Tracy Schloss*