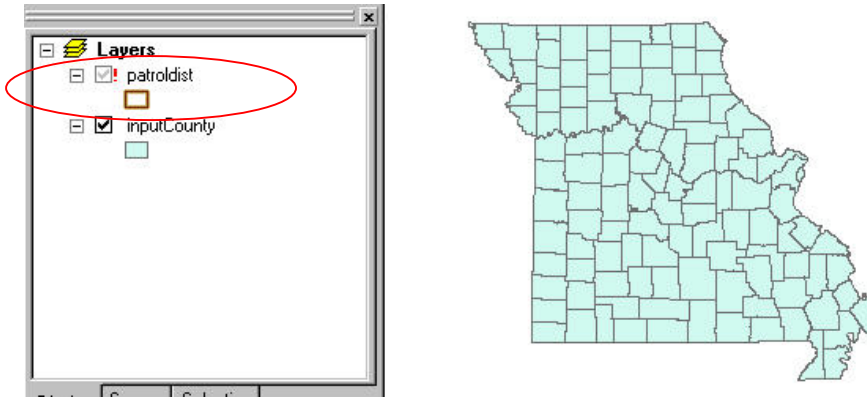


ArcMap Project Repair

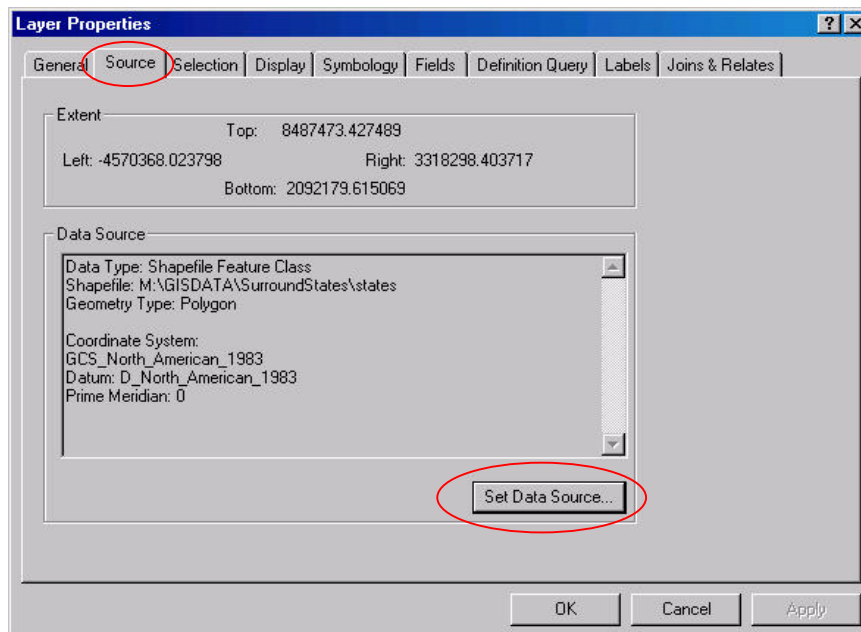
When ArcMap (.mxd) projects are created, the file names of the layers, including the directory name, are stored within the project. If the layer names or folder names are later moved, renamed or deleted, the layer will no longer be displayed in ArcMap.



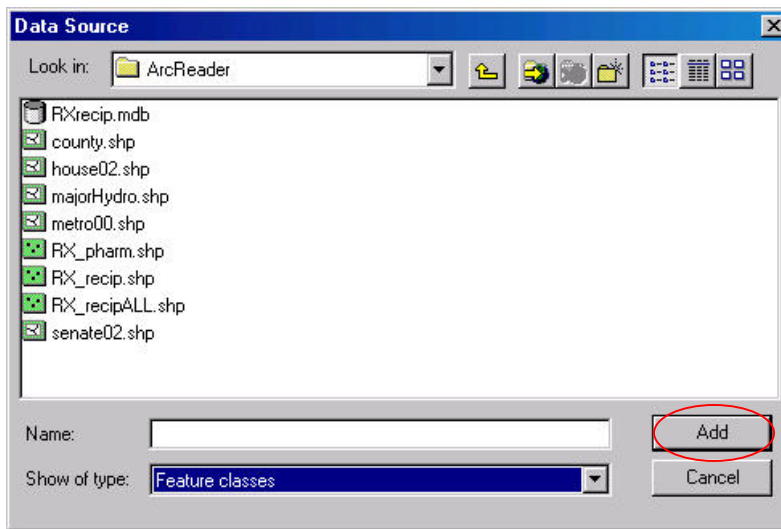
The layer continues to be listed in the project, but the red exclamation point (!) indicates that the layer is not being drawn on the display.

Fix # 1 - One very quick fix is to replace the file in its original folder with its same name. First, close your ArcMap project. If you restore the file to its original name and location, the next time you open the project, the layer will be displayed.

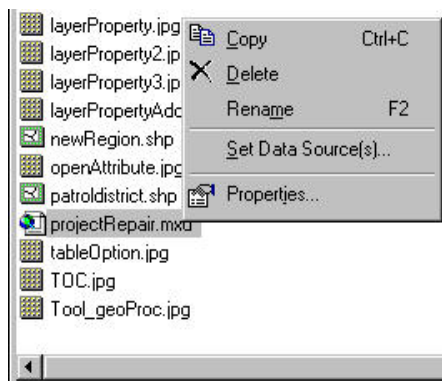
Fix #2 –The next fix is to set the data source for your layer within ArcMap. This works well if you only have one or two layers that need to be repaired. Right click on the layer and look at its properties. Select the Source tab.



Click the Set Data Source button. The dialog will allow you to navigate to the new location and name of the layer. Select the layer name and then click Add.

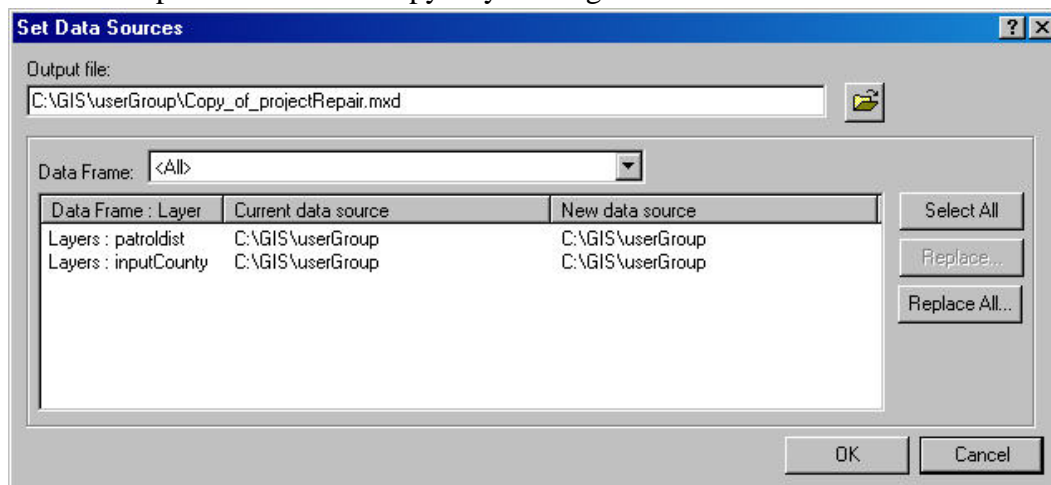


Fix #3 – This fix occurs within ArcCatalog, so if you are in ArcMap, exit out of it.

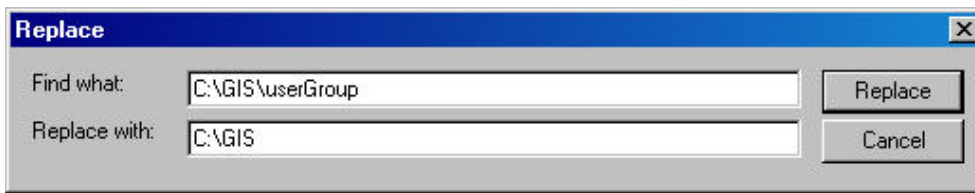


Select the project with the broken links, right click and select Set Data Sources(s)

Note: This process creates a copy of your original MXD file.



This dialog shows each layer and the folder name of the data source. You can choose to select one layer at a time, hold down the Shift key to select multiple layers, or choose Select All.



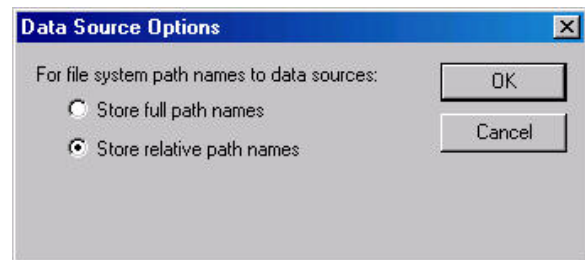
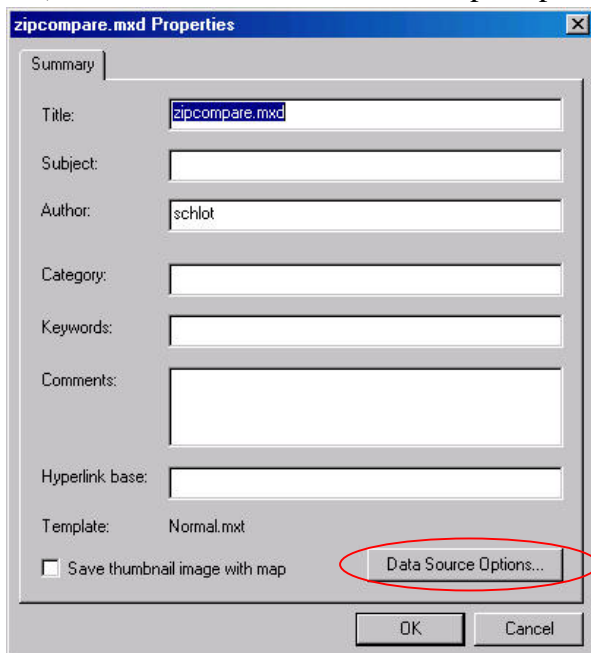
Enter in the location of the layer in the Replace field. Click the Replace button.

You may have to do this several times in order to replace all the necessary path names. When you are finished, click OK in the Set Data Sources dialog. This may take a moment.

When this process is complete, remember to open the COPY OF version of the MXD project.

Fix #4 – This last fix describes the method of creating a portable project that can be moved between folders or machines.

- 1) You must pay special attention to the location of all the files that your project uses during the creation of the project. If you want to make a portable project, you should make sure that the project reference data layers that are in the same folder as your MXD file. This will mean either copying all the data into your folder before you start. Otherwise, you will have to use a method like Fix #2 or Fix #3 and set the data source locations after the project is complete.
- 2) From the File menu, select Map Properties. Click the Data Source Options button.



By default, the full path names are stored with the project. Change the selection to Store relative path names. This will mean that the project will look for layers in the same position relative to the MXD file.

Important Note: If you need to share the project with another user and they have the same network drive folders that you do, and your project ONLY uses features stored on these drives, you will not need to do this.