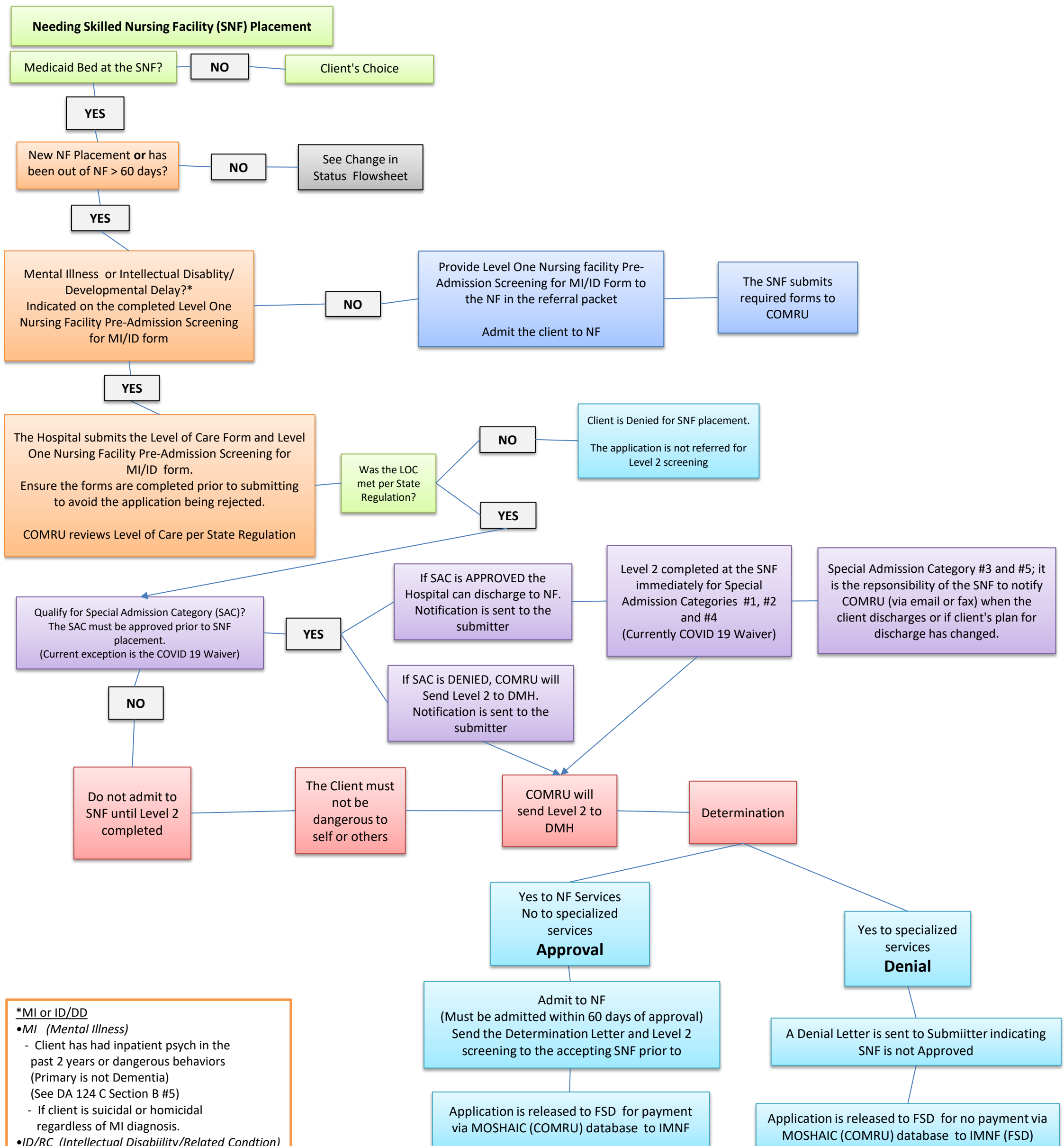


# Hospital to Skilled Nursing Facility Placement Flow Sheet



**\*MI or ID/DD**

- MI (Mental Illness)
  - Client has had inpatient psych in the past 2 years or dangerous behaviors (Primary is not Dementia) (See DA 124 C Section B #5)
  - If client is suicidal or homicidal regardless of MI diagnosis.
- ID/RC (Intellectual Disability/Related Condition)
  - Client is ID or a related condition (See DA 124 C Section C #1 and #2)

**\*\*Special Admission Categories** (located on the DA 124 C application):

1. Terminal Illness - expected to result in death in six months or less
2. Serious Physical Illness -- severe/end stage disease (or physical condition as listed on back of DA 124 C form)
3. Respite Care -- stays not more than thirty (30) days to provide relief for in-home caregiver
4. Emergency Provisional Admission -- must be hotlined. Stays not more than 7 days to protect person from serious physical harm to self and others
5. Direct Transfer from a Hospital -- stays not more than thirty (30) days for the condition for which the person is currently receiving hospital care