



# Missouri Weekly Influenza Surveillance Report 2021-2022 Influenza Season<sup>1</sup>

**Week 19: May 8, 2022 – May 14, 2022**

*All data are preliminary and may change as more reports are received.*

## Summary:

- The estimated influenza activity in Missouri is Local<sup>2</sup>.
- During Week 19, a total of 468 laboratory-positive<sup>3</sup> influenza cases (432 influenza A, 36 influenza B and 0 untyped) were reported. A season-to-date total of 42,620 laboratory-positive influenza cases (39,274 influenza A, 3,087 influenza B, and 259 untyped) have been reported in Missouri as of Week 19. The influenza type for reported season-to-date cases includes 92.2% influenza A, 7.2% influenza B, and 0.6% untyped. The percentage of respiratory specimens testing positive for influenza in Missouri laboratories reporting to the National Respiratory and Enteric Virus Surveillance System (NREVSS) decreased to less than 1.0% during Week 19. The number of Missouri facilities reporting to NREVSS was limited during week 19 therefore, the data should be interpreted with caution.
- Influenza-like illness (ILI) activity for Week 19 was below baseline for the hospital emergency room visit chief complaint data reported through ESSENCE. The reported percentage of visits for ILI through ESSENCE was 1.44% (Figure 6).<sup>4</sup>
- Twenty-nine influenza-associated deaths have been reported in Missouri as of Week 19.<sup>5</sup>
- Eight influenza or ILI-associated outbreaks have been reported in Missouri as of Week 19.
- National influenza surveillance information is prepared by CDC and is included in the weekly FluView report, which is available online at <http://www.cdc.gov/flu/weekly/fluactivitysurv.htm>.

---

<sup>1</sup>The 2021- 2022 influenza season begins CDC Week 40 (week ending October 9, 2021) and ends CDC Week 39 (week ending October 1, 2022).

<sup>2</sup>Local: Increased ILI in one region and elevated numbers of laboratory-confirmed influenza cases in that region.

<sup>3</sup>Laboratory-positive influenza includes the following test methods: rapid influenza diagnostic tests (antigen), reverse transcriptase polymerase chain reaction (RT-PCR) and other molecular assays, immunofluorescence antibody staining (Direct (DFA) or Indirect (IFA)), or viral culture.

<sup>4</sup>ILI is defined by ESSENCE as Emergency Department chief complaints for Influenza or (FeverPlus and (Cough or SoreThroat) and not NonILIFevers).

<sup>5</sup>All influenza-associated deaths became reportable in Missouri in 2016.

## Surveillance Data:

### Interactive Maps

The jurisdiction-specific influenza data are provided through interactive maps available at <https://arcg.is/G5LWv>.

Click on the jurisdiction to view the influenza data specific to that jurisdiction.

- Reported Laboratory-positive Influenza Cases by Influenza Type by Jurisdiction, CDC Week 19
- Reported Week-specific Rate per 100,000 Population, CDC Week 19
- Reported Laboratory-positive Influenza Cases by Influenza Type by Jurisdiction, Season-to-Date
- Reported Rate per 100,000 Population, Season-to-Date

### Data Figures

**Figure 1. Number of Laboratory-positive<sup>†</sup> Influenza Cases by Influenza Type, Missouri, CDC Weeks 17-19 (April 24, 2021 – May 14, 2022)\***

Influenza Type	Week 17	Week 18	Week 19	2021-2022* Season-to-Date
Influenza A	1,061	703	432	39,274
Influenza B	56	38	36	3,087
Influenza Unknown Or Untyped	5	2	0	259
<b>Total</b>	<b>1,122</b>	<b>743</b>	<b>486</b>	<b>42,620</b>

<sup>†</sup>Laboratory-positive influenza includes the following test methods: rapid influenza diagnostic tests (antigen), reverse transcriptase polymerase chain reaction (RT-PCR) and other molecular assays, immunofluorescence antibody staining (Direct (DFA) or Indirect (IFA)), or viral culture.

\*Influenza season begins with the week ending October 9, 2021 (CDC Week 40) Data Source: Missouri Health Information Surveillance System (WebSurv).

**Figure 2. Number of Laboratory-positive<sup>†</sup> Influenza Cases and Case Rates by Age Group, Missouri, CDC Week 19 (May 8, 2022 – May 14, 2022)\*\***

Age Group	Week 19 Cases	Week 19 Rate <sup>‡</sup>	2021-22* Season-to-Date	2021-2022* Season-to-Date Rate <sup>‡</sup>
00-04	91	24.72	6,736	1,830.04
05-24	234	14.96	21,649	1,384.20
25-49	83	4.27	7,750	398.85
50-64	21	1.75	3,238	269.79
65+	39	3.67	3,247	305.73
<b>Total</b>	<b>468</b>	<b>7.63</b>	<b>42,620</b>	<b>694.43</b>

<sup>†</sup>Laboratory-positive influenza includes the following test methods: rapid influenza diagnostic tests (antigen), reverse transcriptase polymerase chain reaction (RT-PCR) and other molecular assays, immunofluorescence antibody staining (Direct (DFA) or Indirect (IFA)), or viral culture.

\*Influenza season begins week ending October 3, 2020 (CDC Week 40) Data Source: Missouri Health Information Surveillance System (WebSurv)

<sup>‡</sup>Incidence Rate per 100,000 population

**Figure 3. Number of Laboratory-positive<sup>†</sup> Influenza Cases and Case Rates by Region, Missouri, CDC Week 19 (May 8 – May 14, 2022)<sup>\*\*</sup>**

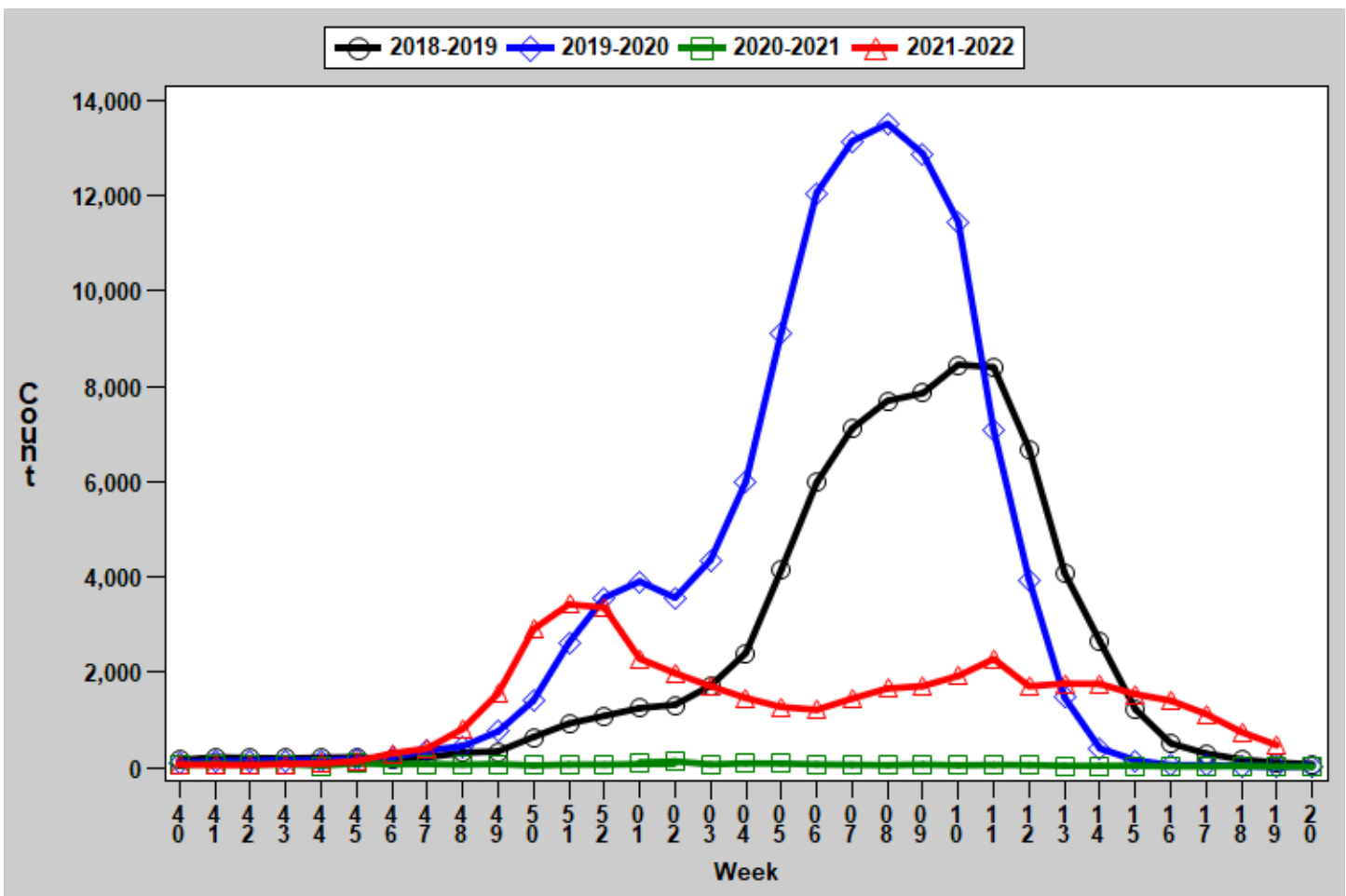
Region	Week 19 Cases	Week 19 Rate <sup>‡</sup>	2021-22* Season-to-Date	2021-22* Season-to-Date Rate <sup>‡</sup>
Central	30	4.45	4,466	661.81
Eastern	343	15.12	12,852	566.72
Northwest	49	2.99	11,043	674.70
Southeast	31	7.17	4,892	1,131.26
Southwest	15	1.43	9,367	891.56
<b>Total</b>	<b>468</b>	<b>7.63</b>	<b>42,620</b>	<b>694.43</b>

<sup>†</sup>Laboratory-positive influenza includes the following test methods: rapid influenza diagnostic tests (antigen), reverse transcriptase polymerase chain reaction (RT-PCR) and other molecular assays, immunofluorescence antibody staining (Direct (DFA) or Indirect (IFA)), or viral culture.

<sup>\*</sup>Influenza season begins week ending October 3, 2020 (CDC Week 40) Data Source: Missouri Health Information Surveillance System (WebSurv)

<sup>‡</sup>Incidence Rate per 100,000 population

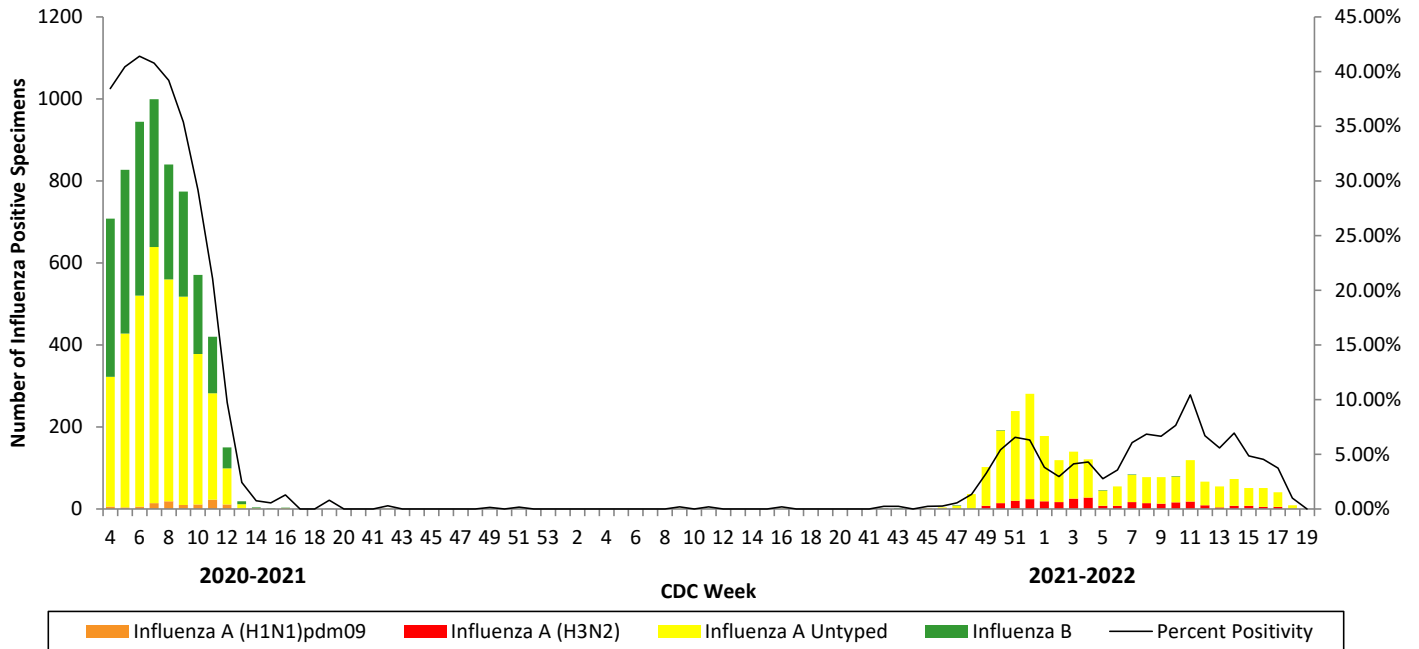
**Figure 4. Number of Laboratory-positive<sup>†</sup> Influenza Cases by CDC Week, Missouri, 2018-2022<sup>\*</sup>**



<sup>†</sup>Laboratory-positive influenza includes the following test methods: rapid influenza diagnostic tests (antigen), reverse transcriptase polymerase chain reaction (RT-PCR) and other molecular assays, immunofluorescence antibody staining (Direct (DFA) or Indirect (IFA)), or viral culture.

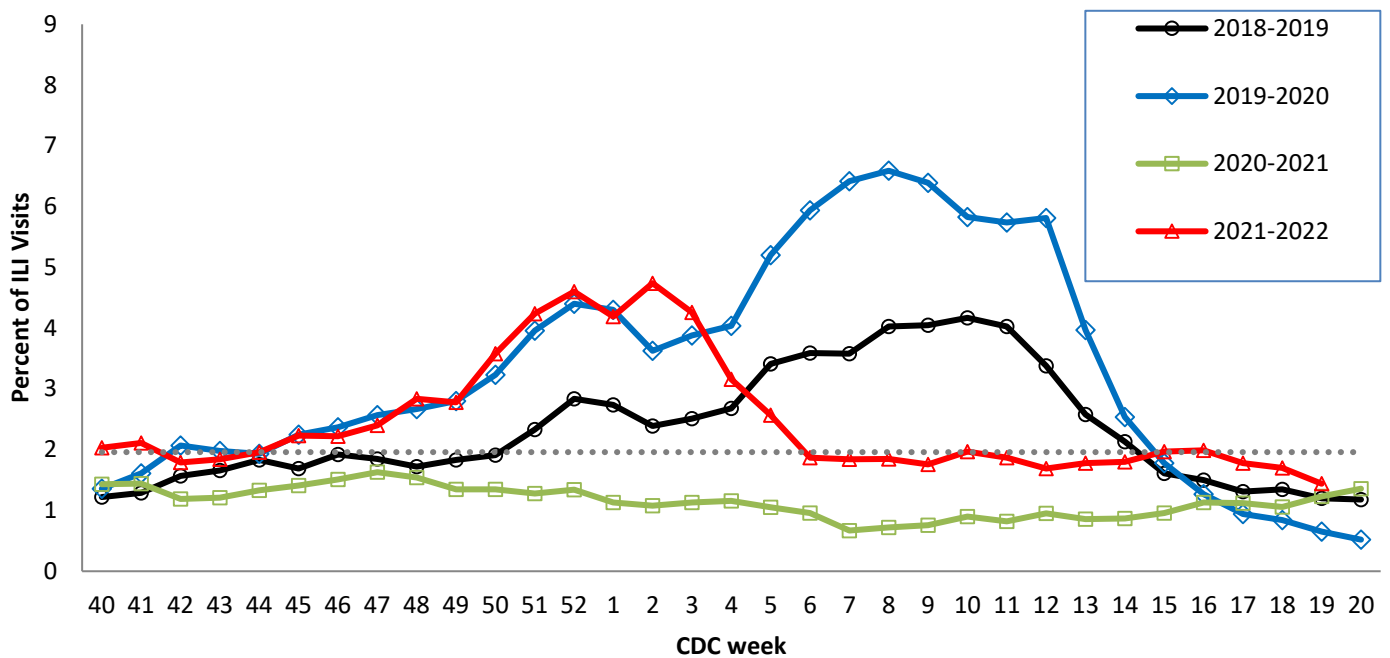
<sup>\*</sup>2021-2022 season-to-date through the week ending May 21, 2022 (Week 20).Data Source: Missouri Health Information Surveillance System (WebSurv)

**Figure 5. Season-to-Date PCR (+) Tests for Influenza in Missouri**



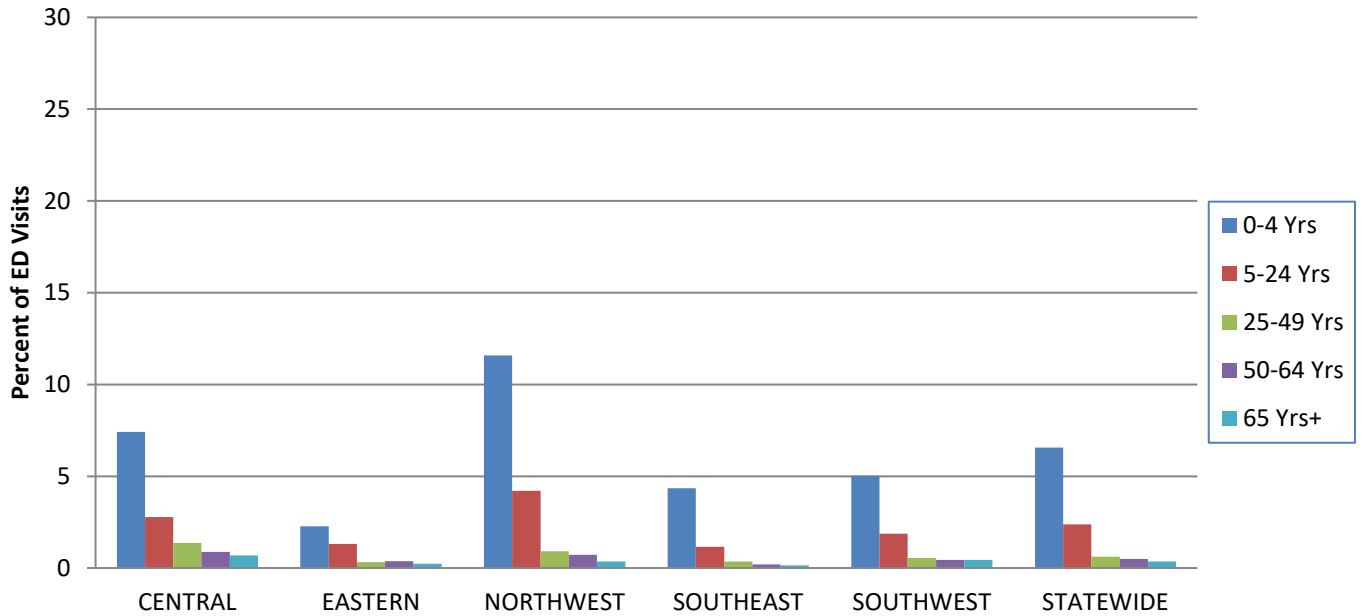
Data Source: National Respiratory and Enteric Virus Surveillance System (NREVSS), Centers for Disease Control and Prevention (CDC). 2021-2022 season-to-date through the week ending May 14, 2022 (Week 19).

**Figure 6. Percentage of Emergency Department (ED) Visits for Influenza-like Illness (ILI) in ESSENCE Participating Hospitals, 2018-2022 Influenza Seasons\*\***



\*\*The ESSENCE ILI Baseline is the mean percent of ILI visits for each week during the previous three flu seasons when percentage of ILI visits were less than 2% of total visits, plus two standard deviations. Data Source: Missouri Department of Health and Senior Services (DHSS), Bureau of Reportable Disease Informatics, ESSENCE version 1.20.

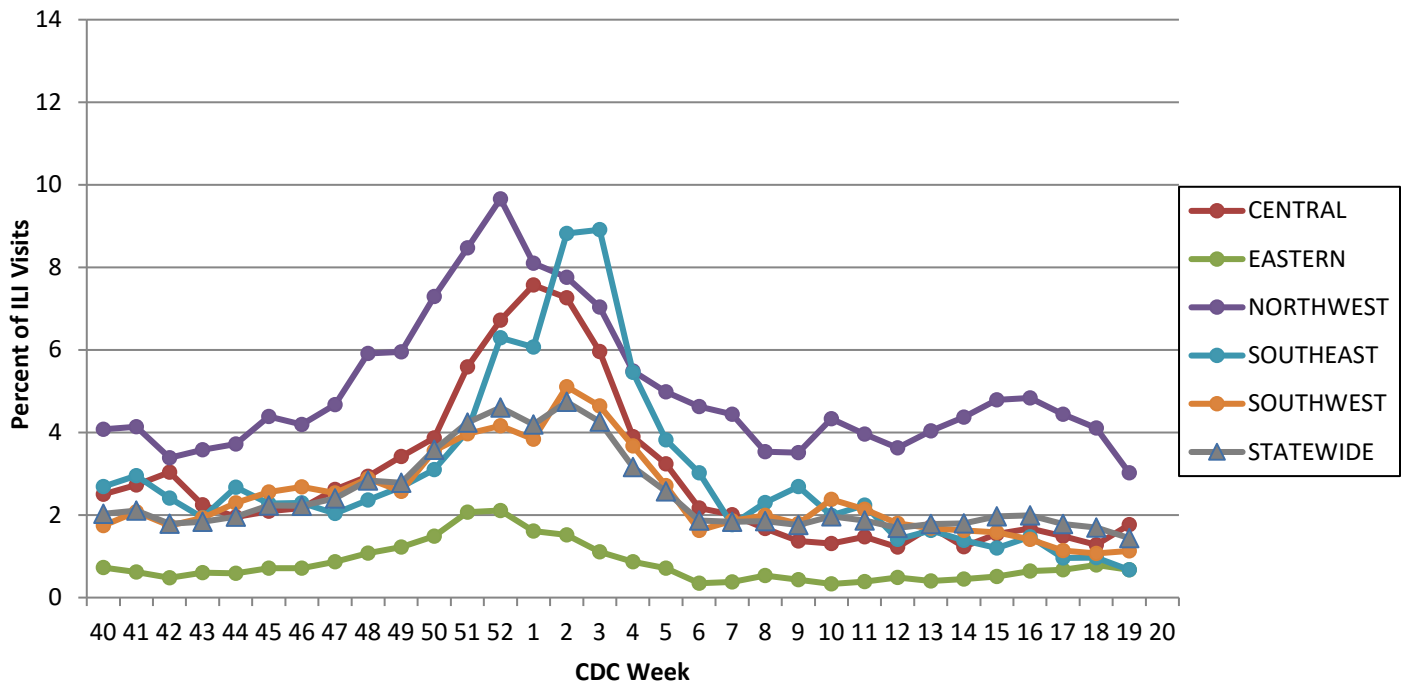
**Figure 7. Percentage of Emergency Department (ED) Visits for Influenza-like Illness (ILI) in ESSENCE Participating Hospitals, by Age Group, Region and Statewide, Week 19, 2021\***



Data Source: Missouri Department of Health and Senior Services (DHSS), Bureau of Reportable Disease Informatics, ESSENCE version 1.20.

\*The ILI data from a small number of sites located in the Northwest Region of the state is temporarily unavailable in ESSENCE. Therefore, the ILI data for the Northwest Region should be interpreted with caution.

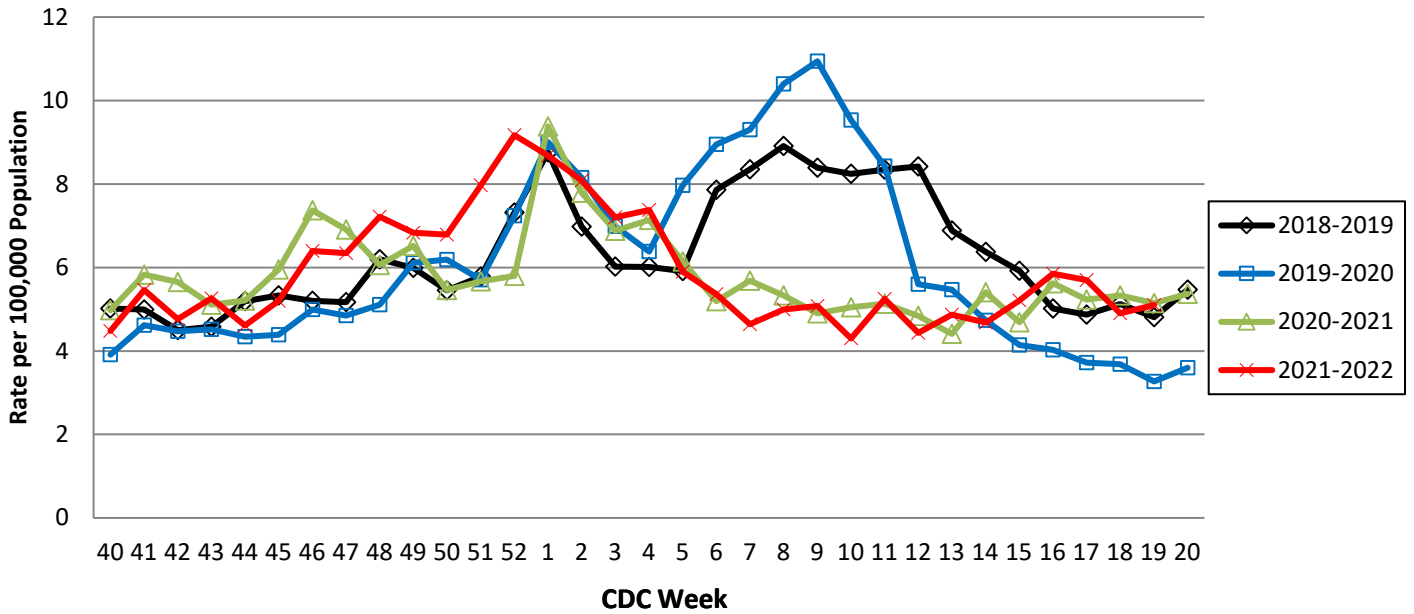
**Figure 8. Percentage of Emergency Department (ED) Visits for Influenza-like Illness (ILI) in ESSENCE Participating Hospitals, by Region and Statewide, 2021-2022 Influenza Season\***



Data Source: Missouri Department of Health and Senior Services (DHSS), Bureau of Reportable Disease Informatics, ESSENCE version 1.20.

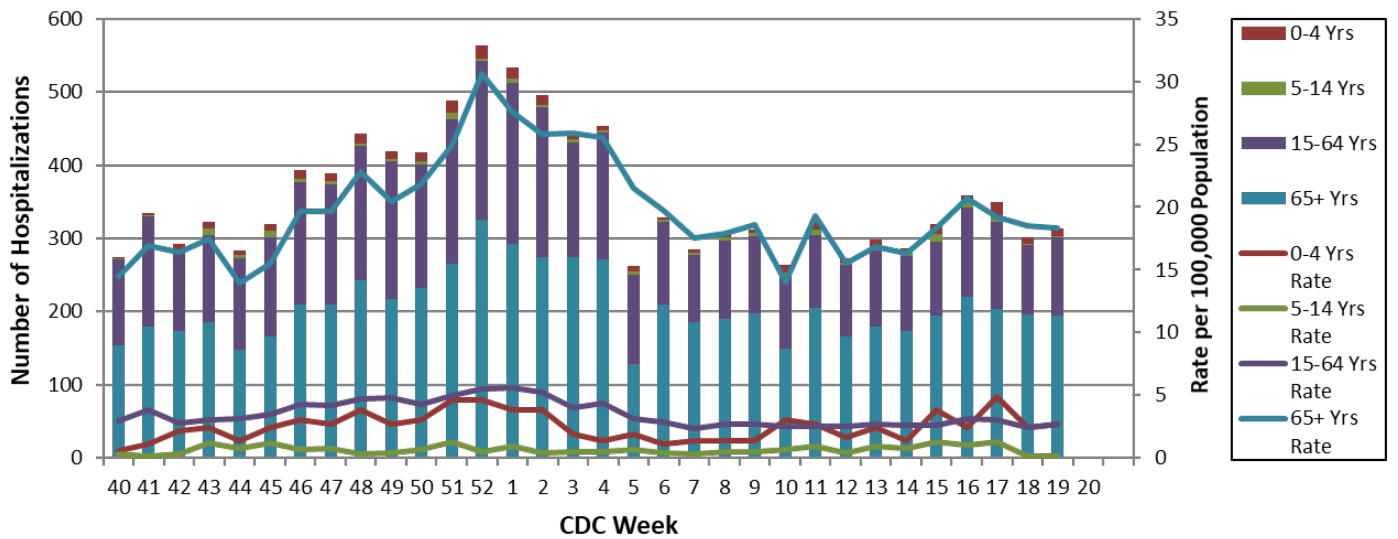
\*The ILI data from a small number of sites located in the Northwest Region of the state is temporarily unavailable in ESSENCE. Therefore, the ILI data for the Northwest Region should be interpreted with caution.

**Figure 9. Weekly Rate of Patients Hospitalized with Influenza and/or Pneumonia Syndromes in Missouri Hospitals, 2018-2022 Influenza Seasons**



Data Source: Missouri Department of Health and Senior Services (DHSS), Bureau of Reportable Disease Informatics, HL7 Messaging Portal. Population data from Missouri Census Data Center 2017 (<https://census.missouri.edu>).

**Figure 10. Number of Patients Hospitalized with Influenza and/or Pneumonia Syndromes in Participating Missouri Hospitals by Age Group, Week 19, 2021-2022 Influenza Season**



Data Source: Missouri Department of Health and Senior Services (DHSS), Bureau of Reportable Disease Informatics, HL7 Messaging Portal

## **Additional Influenza Data Sources:**

**Centers for Disease Control and Prevention: National Influenza Surveillance (FluView):**

<http://www.cdc.gov/flu/weekly/fluactivitysurv.htm>

**The National Respiratory and Enteric Virus Surveillance System (NREVSS):**

<https://www.cdc.gov/surveillance/nrevss/>

**World Health Organization: International Influenza Surveillance:**

[http://www.who.int/influenza/surveillance\\_monitoring/en/](http://www.who.int/influenza/surveillance_monitoring/en/)