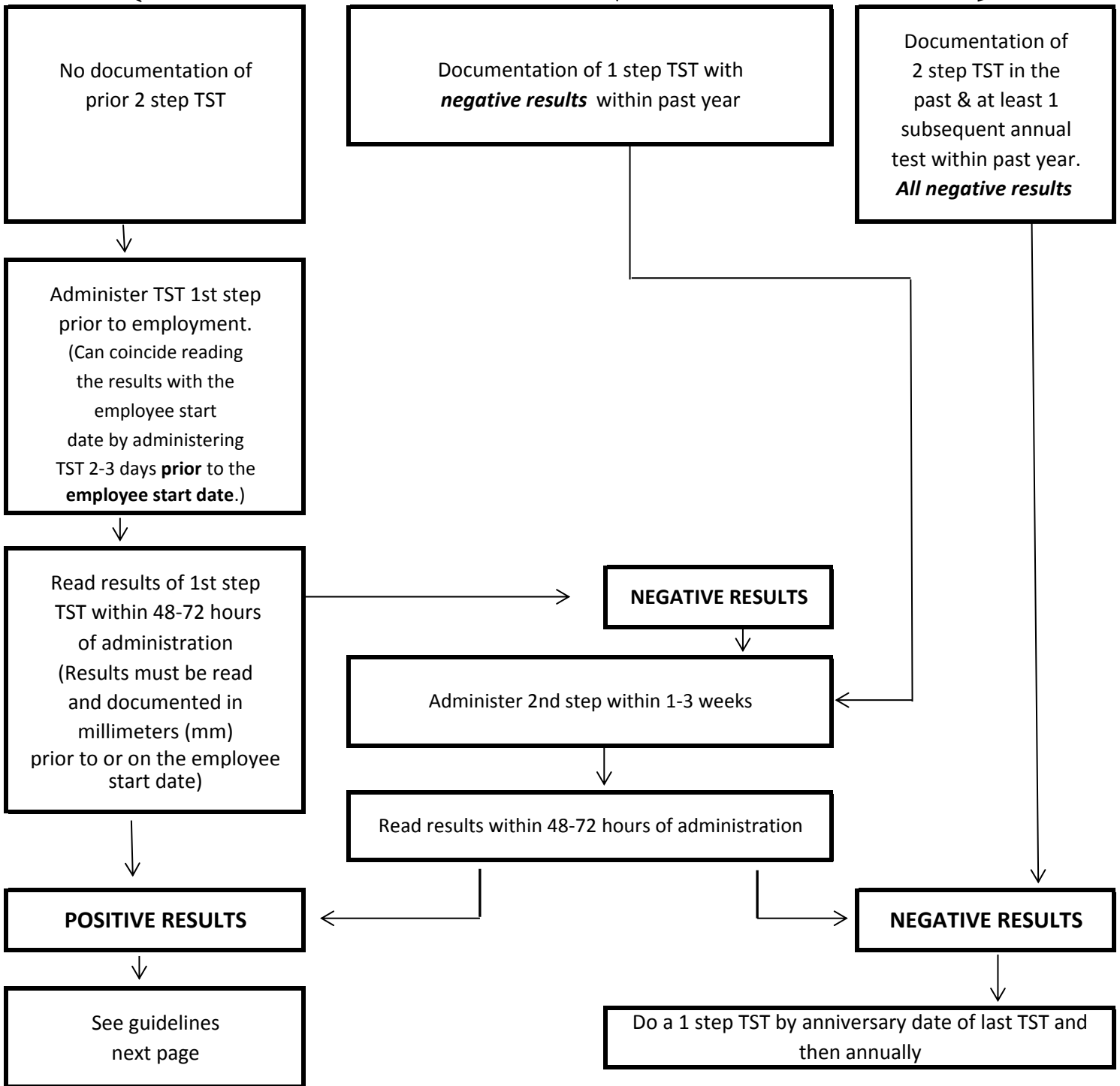


TB SCREENING FOR LONG TERM CARE EMPLOYEES
Employee accepts position (the hire date)

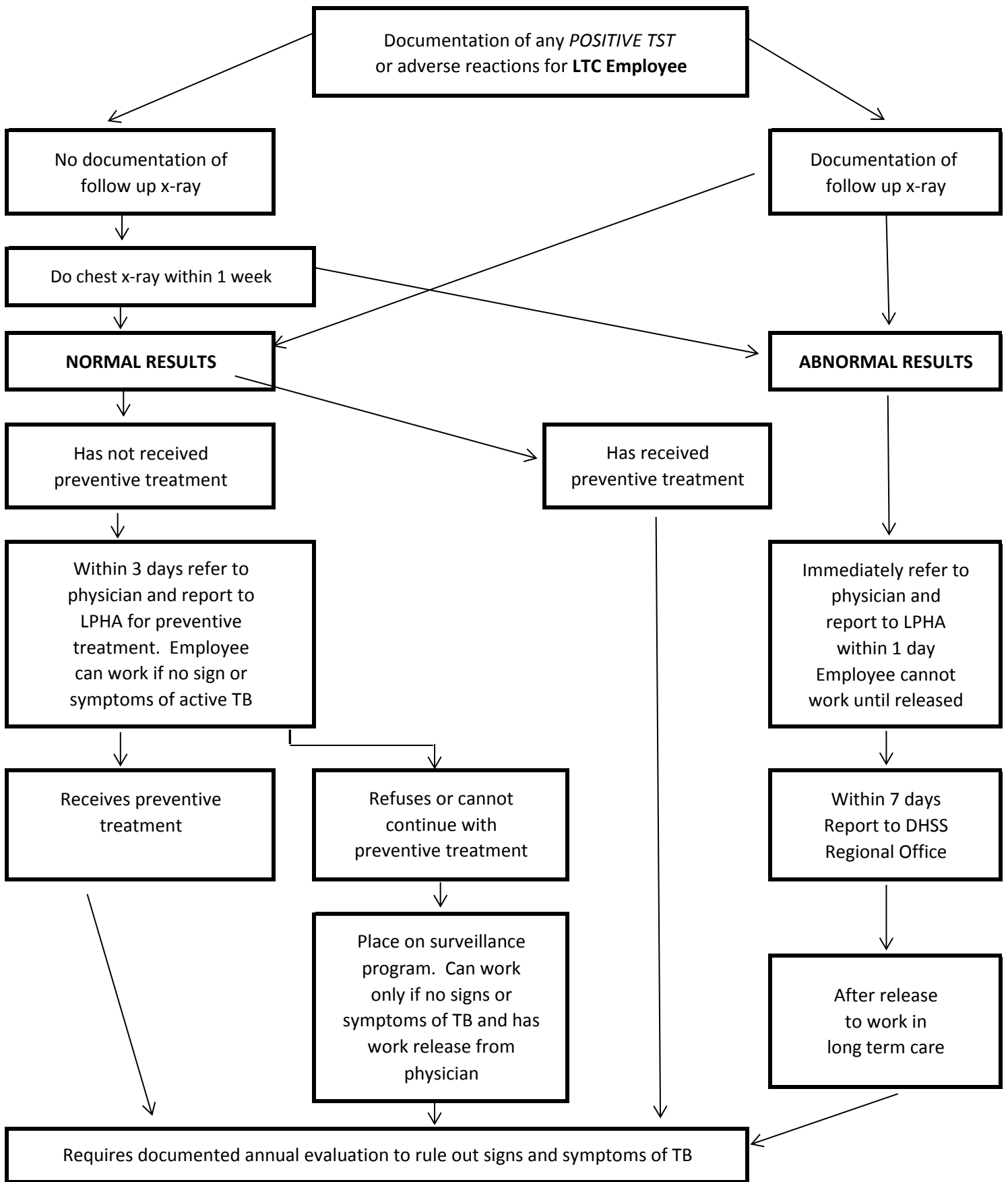


Hire Date = the date the employee accepts the position

Employee Start Date = the date the employee starts work for compensation

*****The employee cannot start work for compensation until the 1st step TST is administered and read. A positive result would require a chest x-ray prior to starting work.*****

Per the CDC, it is acceptable to substitute IGRA blood tests for TSTs



TB = Tuberculosis

TST = Tuberculin Skin Test

LTC = Long Term Care

LPHA = Local Public Health Agency

DHSS = Department of Health and Senior Services

CDC = Centers for Disease Control

IGRA = Interferon - Gamma Release Assay