

Missouri
Viral Hepatitis
Prevention, Care and Treatment
Resource Directory



Created by
Missouri Viral Hepatitis Committee
Missouri Department of Health and Senior Services
Updated March 2016

Page purposely blank for formatting

TABLE OF CONTENTS

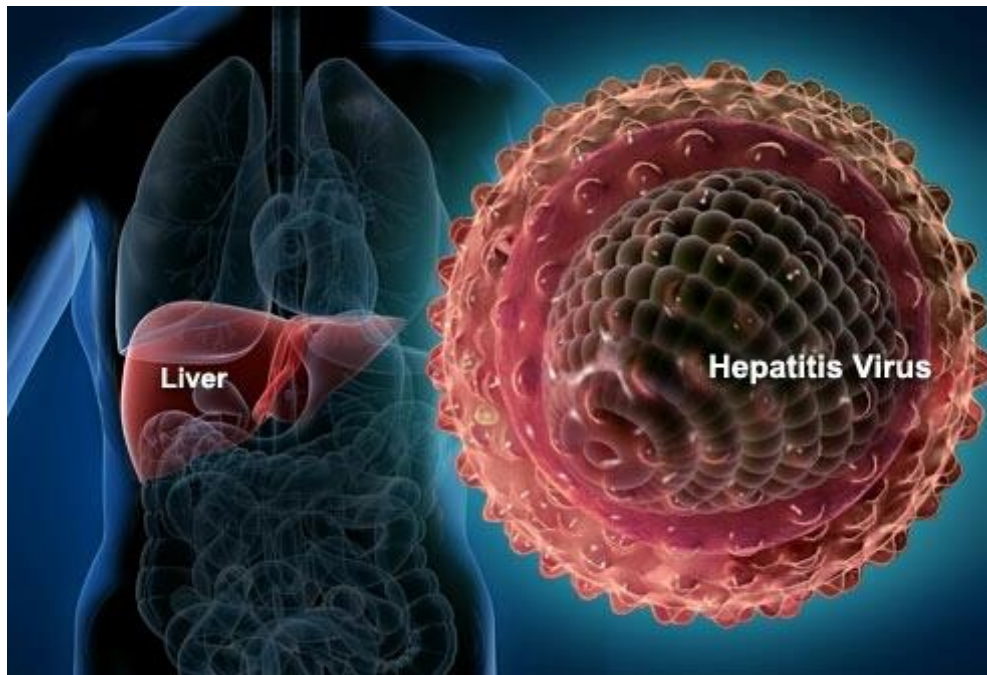
1. Introduction	Page 4
2. Understanding Viral Hepatitis	Page 5
3. Overview Chart on Viral Hepatitis A, B and C	Page 6
4. Information About Hepatitis C Testing	Page 7
5. Hepatitis C Testing Sites	Page 9
6. Accessing Hepatitis A & B Vaccinations	Page 14
7. Local Public Health Agencies	Page 15
8. Hospitals	Page 15
9. Federally Qualified Health Centers	Page 16
10. Hepatologists and Gastroenterologists	Page 31
11. Treatment Information and Patient Assistance Programs	Page 40
12. Support Groups	Page 41
13. Internet Resources	Page 42
• Support and Other Information	
• Clinical Trials	
14. Glossary of Important Terms	Page 43

INTRODUCTION

Viral Hepatitis is a major public health problem in Missouri. Nationwide, it is estimated that more than 1.2 million people are living with Chronic Hepatitis B and at least 3.2 million people are living with chronic Hepatitis C. It is also estimated that up to 75% of people infected with Hepatitis C do not know it.

The Missouri Viral Hepatitis Committee is community driven and provides an opportunity for people interested in viral hepatitis prevention, care and treatment to work together to address the needs of Missouri citizens related to viral hepatitis. The committee is comprised of private citizens, community based organizations, state and local public health agencies, behavioral health and substance abuse treatment providers, healthcare providers and health educators. For more information about the committee you can visit www.health.mo.gov/viralhepatitis.

The Committee is dedicated to our mission to reduce the burden of viral hepatitis in Missouri. To accomplish our mission, one role of the committee is to provide guidance regarding Missouri's Viral Hepatitis Action Plan. The Plan includes raising public awareness through education, providing screening tests in local communities and referring clients to providers who treat viral hepatitis. To further assist with accomplishing our mission the committee wanted to compile a directory to inform the general community and providers about the viral hepatitis services available in the state of Missouri. This directory was created by the Missouri Viral Hepatitis Committee and the Missouri Department of Health and Senior Services, Viral Hepatitis Program.



UNDERSTANDING VIRAL HEPATITIS

What is Hepatitis?

Hepatitis means inflammation of the liver. Hepatitis is also the name of the family of viral infections that affect the liver. The most common types are Hepatitis A, Hepatitis B and Hepatitis C. More information is below and you can also visit www.health.mo.gov/viralhepatitis.

Your Liver Health

Weighing about three pounds, the liver functions as a unique organ with many crucial roles to sustain life. From circulation to digestion, the liver continually processes the blood used by the rest of the body. The liver performs over 500 functions to keep us healthy including converting food into energy and substances needed for life and growth, storing glycogen (a blood sugar regulator), amino acids, protein and fat. It also makes the enzymes and bile that help digest food and neutralizes harmful toxins and waste.

The Hepatitis viruses attack the liver and can remain without symptoms, sometimes for decades. Some symptoms may include fever, fatigue, loss of appetite, nausea, vomiting, abdominal pain, grey colored stools, joint pain and jaundice.

If you have a hepatitis virus you should: 1) Stop or reduce your alcohol intake as much as possible [alcohol harms the liver] 2) Eat a healthy, low-fat, low salt diet 3) Drink a lot of water 4) Get enough rest and moderate exercise 5) Get vaccinated for HAV and HBV (if you haven't been) 6) See your physician for regular check-ups

Hepatitis A Virus (HAV)

Hepatitis A is an acute liver disease caused by the hepatitis A virus. It lasts from a few weeks to several months and does not lead to a chronic infection. It is transmitted when the fecal matter (even microscopic amounts) of a person infected with hepatitis A is ingested by another person. This can happen by close person-to-person contact or through contaminated food or drinks. There is a vaccine available to prevent contracting hepatitis A.

Hepatitis B Virus (HBV)

Hepatitis B is a liver disease caused by the hepatitis B virus. It ranges in severity from a mild illness, lasting a few weeks (acute), to a serious long-term (chronic) illness that can lead to liver cancer. It is transmitted when the blood, semen or vaginal fluid of a person infected with the hepatitis B virus enters the body of someone not infected. This can happen through sexual contact, sharing needles or syringes or other drug equipment. Hepatitis B can also be passed from an infected mother to her baby at birth. There is a vaccine available to prevent contracting hepatitis B.

Hepatitis C Virus (HCV)

Hepatitis C is a liver disease caused by the hepatitis C virus. It ranges in severity from a mild illness, lasting a few weeks (acute), to a serious long-term (chronic) illness that can lead to liver cancer. It is transmitted when the blood of a person infected with the hepatitis C virus enters the body of someone not infected. Most people become infected through sharing needles or syringes or other drug equipment. It can also be spread through tattoo needles and equipment. Before 1992, when widespread screening of the blood supply began it was also commonly spread through blood transfusions and organ transplants, so many do not realize they are infected from the past. There is not a vaccine to prevent hepatitis C.

OVERVIEW CHART ON VIRAL HEPATITIS A, B and C

Viral Hepatitis A, B and C

	A	B	C
Transmission:	Feces (fecal to oral)	Blood and Body Fluids (Semen and Vaginal Fluids)	Blood to Blood
Symptoms of Acute Infection (if any): Fever – Fatigue – Loss of Appetite – Nausea – Vomiting – Abdominal Pain – Grey Colored Stools – Joint Pain – Jaundice			
Potential for Chronic Infection:	None	Approx 15% of infections	75% - 85% of infections
Vaccine:	Yes	Yes	No
Treatment:	None, it goes away on its own within 6 months.	Yes, but not always successful.	Yes, and newer medications are curing the virus for most people.
Prevention:	<ul style="list-style-type: none"> -Vaccination -Wash hands after using toilet -Effectively clean surfaces that may be contaminated with feces 	<ul style="list-style-type: none"> -Vaccination -Clean up blood spills correctly -Do not share needles of any kind, razors or toothbrushes -Practice safe sex 	<ul style="list-style-type: none"> -Do not share needles of any kind, razors or toothbrushes -Do not share equipment used for tattooing (including ink) or body piercings -Clean up blood spills correctly -Practice safe sex
Other Notes:		The virus can live and be infectious in dried blood for extended periods of time.	
Cases in MO in 2014:	22	606	6284

INFORMATION ABOUT HEPATITIS C TESTING

Why is it important to get tested for Hepatitis C?

- Millions of Americans have Hepatitis C, but most do not know it. Many people do not know when or how they got infected.
- About 8 in 10 people who get infected with Hepatitis C develop a chronic or lifelong infection.
- People with Hepatitis C often have no symptoms.
- Many people live with an infection for decades without feeling sick.
- Hepatitis C is the leading cause of liver cancer and the leading cause of liver transplants.
- New treatments are available for Hepatitis C that 'cure' the virus.

Who should get tested for Hepatitis C?

- Anyone born between 1945-1965, that has never been tested.
- Anyone who has injected drugs, even just once or many years ago.
- Anyone who has ever shared any injection equipment (needles, syringes, cooker, cotton, water, etc).
- Anyone who has ever received a tattoo or piercing with shared equipment (needles, ink, etc) or while incarcerated or in other non-professional settings.
- Anyone who has or had a sexual partner who has injected drugs or shared injection equipment.
- Anyone who has or had a sexual partner who has Hepatitis C.
- Anyone who has chronic liver disease or has HIV/AIDS.
- A man who has had sex with other men.



Other people who may want to get tested:

- A person who has shared personal care equipment (Razors, toothbrushes, nail clippers, etc) with someone who has Hepatitis C.
- Anyone, such as a healthcare worker, who has had an accidental needle stick injury.
- Anyone who has or had anonymous sexual partners, multiple sexual partners or other high risk sexual activity.
- Anyone who had a blood transfusion or organ transplant before 1992 or received clotting factors before 1987.
- Anyone born to Hepatitis C positive mother.

Getting Tested for Hepatitis C – How does it work?

A blood test, called a Hepatitis C Antibody test (sometimes called the Anti-HCV test) is used to find out if someone has ever been infected with Hepatitis C. The Anti-HCV test looks for antibodies to the Hepatitis C virus. Antibodies are chemicals released into the bloodstream when someone gets infected. Test results can take anywhere from a few days to a few weeks to come back. New rapid tests are now available in some settings and the results of these tests are available in 20 minutes.

Non-Reactive or Negative Hepatitis C Antibody Test

A non-reactive or negative antibody test means that you have not been exposed to the Hepatitis C virus. However, if you think you may have been exposed in the last 6 months, you will need to be tested again. Sometimes it takes the body a little longer to produce the antibodies.

INFORMATION ABOUT HEPATITIS C TESTING (Continued)

Reactive or Positive Hepatitis C Antibody Test

A reactive or positive antibody test means that you have been infected with the hepatitis C virus at some point in time. Once you have been infected these antibodies will be present in your blood the rest of your life, even if you clear the virus or become cured. A reactive antibody test does not necessarily mean that you are currently infected. A follow up test looking for virus in the blood (viral load) is needed.

Confirmatory Testing - Diagnosing Hepatitis C

If the antibody test is reactive (positive) you need an additional test to confirm that you currently have a Hepatitis C infection. This test, looking for viral load, is called an HCV RNA test. If the follow up test is:

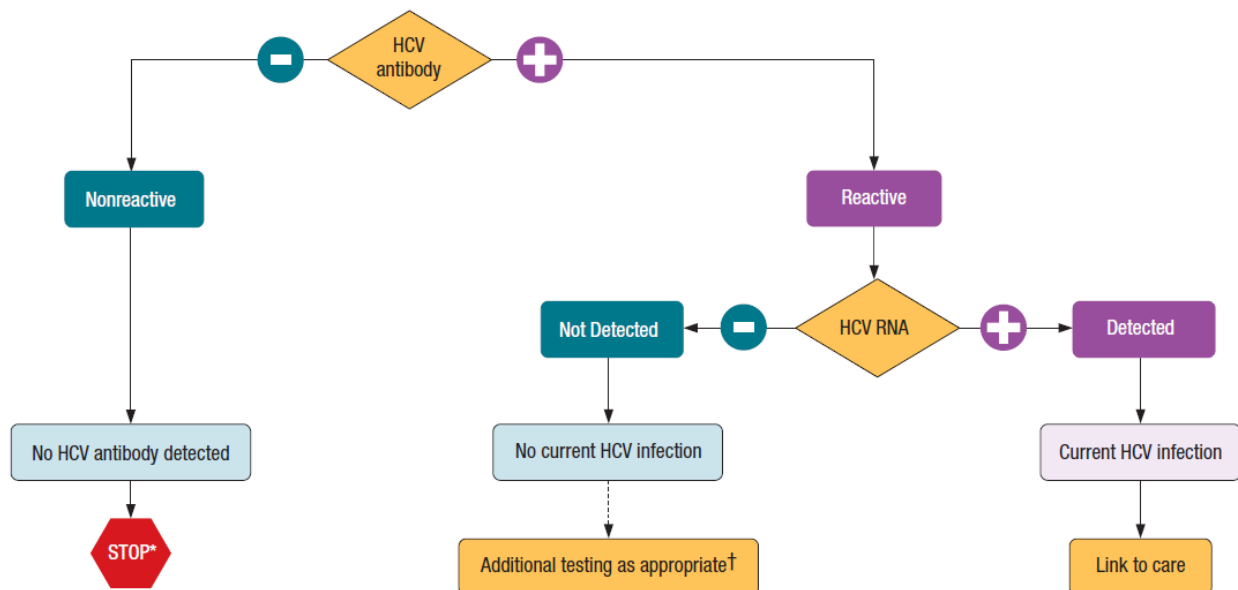
Negative (or undetected) – this means you were infected with Hepatitis C, but the virus is not now present in your blood.

Positive – this means you currently have the virus in your blood and you will need to talk to a doctor experienced in diagnosing and treating Hepatitis C, usually a Gastroenterologist or a Hepatologist.

Recommended Testing Sequence for Identifying Current Hepatitis C Virus (HCV) Infection



U.S. Department of Health and Human Services
Centers for Disease Control and Prevention



HEPATITIS C TESTING SITES (Page 1)

County: Adair

Adair County Health Dept
1001 S Jamison St
Kirksville, MO 63501
Phone: 660-665-8491

County: Audrain

Audrain County Health Dept
1130 S Elmwood Dr
Mexico, MO 65265
Phone: 573-581-1332

County: Boone

Behavioral Health Group - Columbia
1301 Vandiver, Suite Y
Columbia, MO 65202
Phone: 573-449-8338

Boone County Health Dept
1005 W Worley
Columbia, MO 65203
Phone: 573-817-6402

Hep C Alliance
601 Business Loop 70, Suite 138
Columbia, MO 65203
Phone: 573-442-6599

County: Butler

Butler County Health Dept
1619 North Main
Poplar Bluff, MO 63901
Phone: 573-785-8478

County: Callaway

Callaway County Health Dept
4950 Cty Rd 304
Fulton, MO 65251
Phone: 573-642-6881

County: Camden

Camden County Health Dept
1976 N Bs Rt 5
Camdenton, MO 65020
Phone: 573-346-5479

County: Cape Girardeau

Cape Girardeau Public Health Center
P.O. Box 1839, 1121 Linden
Cape Girardeau, MO 63702
Phone: 573-335-7846 Ext. 106

County: Clark

Clark County Health Dept
P.O. Box 12, 70 N Johnson
Kahoka, MO 63445
Phone: 660-727-2356

County: Clay

Clay County Health Dept
800 Haines Dr
Liberty, MO 64068
Phone: 816-595-4251

County: Cole

Cole County Health Dept
1616 Industrial Dr
Jefferson City, MO 65109
Phone: 573-636-2181

County: Cooper

Cooper County Health Dept
17040 Klinton Dr
Boonville, MO 65233
Phone: 660-882-2626

County: Crawford

Crawford County Health Dept
PO Box 367, 202 W Main St
Steelville, MO 65565
Phone: 573-775-2555

HEPATITIS C TESTING SITES (Page 2)

County: Franklin

Franklin County Health Dept
15 South Oak St
Union, MO 63084
Phone: 636-583-7300

County: Greene

AIDS Project of the Ozarks
1901 E Bennett, Suite D
Springfield, MO 65804
Phone: 417-881-1900

Alternative Opportunities
2411 W Catalpa St
Springfield, MO 65807
Phone: (417) 862-3455

County: Henry

Henry County Health Dept
306 S Second St
Clinton, MO 64735
Phone: 660-885-8193 x 111

County: Hickory

Hickory County Health Dept
201 Cedar St
Hermitage, MO 65668
Phone: 417-745-6628

County: Howard

Howard County Health Dept
600 W Morrison St Ste 7
Fayette, MO 65248
Phone: 660-248-3100

County: Iron

Iron County Health Dept
606 W Russell St
Ironton, MO 63650
Phone: 573-546-7121

County: Jackson/Clay/Platte/Cass

KC Care Clinic
6400 Prosopect, Ste 200
Kansas City, MO 64132
Phone: 816-753-5144
www.kccareclinic.org

Kansas City Health Dept
2400 Troost Ste 2000
Kansas City, MO 64012
Phone: 816-513-6119

County: Jefferson

Jefferson County Health Dept - Arnold
1818 Lonedell Rd
Arnold, MO 63010
Phone: 636-282-1010 x206

Jefferson County Health Dept - Hillsboro
405 Main St, PO Box 437
Hillsboro, MO 63050
Phone: 636-797-3737

County: Johnson

Johnson County Health Dept
723 PCA Rd
Warrensburg, MO 64093
Phone: 660-747-6121

County: Knox

Knox County Health Dept
217 North 1st Street
Edina, MO 63537
Phone: 660-397-3396

County: Lewis

Lewis County Health Dept
101 Street Hwy A
Monticello, MO 63457
Phone: 573-767-5312

HEPATITIS C TESTING SITES (Page 3)

County: Linn

Linn County Health Dept
P.O. Box 280, 635 S Main
Brookfield, MO 64628
Phone: 660-258-7251

County: Macon

Macon County Health Dept
503 N Missouri
Macon, MO 63552
Phone: 660-385-4711

County: Marion/Ralls

HCADA
146 Communications Dr
Hannibal, MO 63401
Phone: 573-248-1196

Marion County Health Dept
PO Box 1378, 3105 Rt W
Hannibal, MO 63401
Phone: 573-221-1166

NECAC Family Planning - Hannibal
3518 Palmyra Rd
Hannibal, MO 63401
Phone: 573-221-3404

County: McDonald

McDonald County Health Dept
500 Olin Street - PO Box 366
Pineville, MO 64856
Phone: 417-223-3451 x19 or x17

County: Miller

Miller County Health Dept
2125 Hwy 52
Tuscumbia, MO 65082
Phone: 573-369-2359

County: Mississippi

Mississippi County Health Dept
1200 E Marshall St
Charleston, MO 63834
Phone: 573-683-2191

County: Moniteau

Moniteau
401 S Francis
California, MO 65018
Phone: 573-796-3412

County: Montgomery

Montgomery County Health Dept
400 Salisbury St
Montgomery City, MO 63361
Phone: 573-564-2495

County: Morgan

Morgan County Health Dept
104 W Lafayette St
Versailles, MO 65084
Phone: 573-378-5438

County: Pettis

Pettis County Health Dept
911 E 16th St
Sedalia, MO 65301
Phone: 660-827-1130

County: Pike

Pike County Health Dept
1 Health Care Place
Bowling Green, MO 63334
Phone: 573-324-6373

Pike County NECAC Family Planning
805 Business HWY 61 North
Bowling Green, MO 63334
Phone: 573-324-2566

HEPATITIS C TESTING SITES (Page 4)

County: Polk

Polk County Health Dept
P.O. Box 124, 1317 W Broadway
Boliver, MO 65613
Phone: 417-326-7250

County: Pulaski

Pulaski County Health Dept
101 12th St
Crocker, MO 65452
Phone: 573-736-2217

County: Putnam

Putnam County Health Dept
103 N 18th St
Unionville, MO 63565
Phone: 660-947-2429 x 23

County: Ralls

Ralls County Health Dept
405 W 1st St, Box 434
New London, MO 63459
Phone: 573-985-7121

County: Randolph

Randolph County Health Dept
P.O. Box 488, 423 E Logan
Moberly, MO 65270
Phone: 660-263-6643

County: Schuyler

Schuyler County Health Dept
275 S Green St, PO box 387
Lancaster, MO 63548
Phone: 660-457-3721

County: Scotland

Scotland County Health Dept
RR2 Box 55A
Memphis, MO 63555
Phone: 660-465-7275

County: Shannon

Shannon County Health Center
110 Grey Jones Dr - PO Box 65466
Eminence, MO 65466
Phone: 573-226-3914

County: Shelby

Shelby County Health Dept
700 E Main
Shelbyville, MO 63468
Phone: 573-633-2353

County: St Charles

St. Charles County Health Dept
1650 Boone's Lick Rd
St Charles, MO 63301
Phone: 636-949-7400 x 6232

NECAC Family Planning - O'Fallon
3400 Meadow Drive
O'Fallon, MO 63366
Phone: 636-240-7350

County: St Francois

St. Francois County Health Dept
1025 W Main St
Park Hills, MO 63601
Phone: 573-431-1947 x 141

County: St Louis

St. Louis City Dept of Health
1520 Market St, Room 4027
St. Louis, MO 63103
Phone: 314-657-1538

Gateway Apothecary
4473 Forest Park Ave
St. Louis, MO 63108
Phone: 314-381-1818

HEPATITIS C TESTING SITES (Page 5)

County: St. Louis

Saint Louis Effort for Aids
1027 South Vandeventer, Ste 700
St. Louis, MO 63110
Phone: 314-645-6451

Project Ark (Wash U- St. Louis)
4169 Laclede Ave
St. Louis, MO 63108
Phone: 314-535-0413

Williams and Associates
3737 N Kingshighway Blvd, Ste 204-206
St. Louis, MO 63115
Phone: 314-385-1935

County: Ste. Genevieve

Sainte Genevieve County Health Dept
P. O. Box 49, 115 Basler Dr
Ste. Genevieve, MO 63670
Phone: 573-883-7411

County: Stoddard

Stoddard County Health Dept
1001 N Hwy 25
Bloomfield, MO 63825
Phone: 573-568-4593 x213

County: Stone

Lake Area Medical Clinic
PO Box 2576, 1 Main Street
Branson West, MO 65737
Phone: 417-272-0400

Stone County Health Dept-Branson W
16914 Highway 13
Branson West, MO 65737
Phone: 877-305-8211

Stone County Health Dept - Galena
P.O. Box 125, 1 Main Street
Galena, MO 65624
Phone: 877-357-6134

County: Sullivan

Sullivan County Health Dept
101 Hawthorne Dr
Milan, MO 63556
Phone: 660-265-4141

County: Taney

Taney County Health Dept - Branson
320 Rhinehart Rd
Branson, MO 65616
Phone: 417-334-4544 x218

Taney County Health Dept - Forsyth
15479 US Hwy 160
Forsyth, MO 65653
Phone: 417-546-4725 x306

County: Texas

Texas County Health Dept
950 N Hwy 63
Houston, MO 65483
Phone: 417-967-4131

County: Washington

Washington County Health Dept
520 Purcell Dr
Potosi, MO 63664
Phone: 573-438-2164

County: Wayne

Wayne County Health Dept
PO Box 259, 1 Main Street
Greenville, MO 63944
Phone: 573-224-3218

County: Webster

Webster County Health Unit
233 E Washington
Marshfield, MO 65706
Phone: 417-859-2532

ACCESSING HEPATITIS A & B VACCINATIONS



Public Health
Prevent. Promote. Protect.

<http://health.mo.gov/living/lpha/lphas.php>

Every Local Public Health Agency offers Hepatitis A and B vaccinations. Local Public Health Agencies can offer free Hepatitis B vaccines for underinsured or uninsured adults (19 and over) who meet the appropriate (317 funding) criteria.



HealthMap Vaccine Finder

<https://flushot.healthmap.org/#>

The HealthMap Vaccine Finder will help you find Hepatitis A and Hepatitis B Vaccines available in your area.

Immunizations

[Home](#) » [Healthy Living](#) » [Wellness & Prevention](#) » [Immunizations](#)



For their sake. For your sake. Vaccinate.

For Information on Immunizations and the diseases they prevent you can go to

<http://health.mo.gov/living/wellness/immunizations/index.php>

LOCAL PUBLIC HEALTH AGENCIES



Local public health agencies located throughout Missouri work to improve the health of thousands of Missourians every year. Missouri's 115 local public health agencies operate independently of each other and are independent of state and federal public health agencies. The local agencies work directly with the Missouri Department of Health and Senior Services through contracts to deliver public health services to the communities they serve. The state health department also provides technical support, laboratory services, a communication network and other services to support local public health efforts. Local public health agencies also work with numerous partners, including private health care professionals and health advocacy organizations, to improve the health of Missourians. Information on what services each Local Public Health Agency provides can be found at <http://health.mo.gov/living/lpha/lphas.php>. You can also contact the Center for Local Public Health Services at 573-751-6170.

HOSPITALS



You can find a Directory of Missouri Hospitals and the licensures of each one, at <http://health.mo.gov/safety/healthservregs/directories.php>.

FEDERALLY QUALIFIED HEALTH CENTERS

Kansas City Region (Page 1)

COMPASS HEALTH (BEHAVIORAL HEALTH)
1800 COMMUNITY DRIVE
CLINTON, MO 64735
PHONE: 660-885-8131

[HTTP://COMPASSHEALTHHOME.ORG/](http://COMPASSHEALTHHOME.ORG/)

HEP B TESTING: YES
HEP B TREATMENT: REFERS TO SPECIALIST
HEP C TESTING: YES
HEP C TREATMENT: REFERS TO SPECIALIST

HEALTH CARE COLLABORATIVE (HCC) OF RURAL MISSOURI
825 SOUTH BUSINESS HWY 13
LEXINGTON, MO 64067
PHONE: 660-259-2440

[HTTP://WWW.HCCNETWORK.ORG/](http://WWW.HCCNETWORK.ORG/)

HEP B TESTING: YES
HEP B TREATMENT: NO
HEP C TESTING: YES
HEP C TREATMENT: NO

SAMUEL U. RODGERS HEALTH CENTER
(CLAY COUNTY FAMILY MEDICINE)
800 HAINES DRIVE
LIBERTY, MO 64068
PHONE: 816-413-0662

[HTTP://RODGERSHEALTH.ORG/](http://RODGERSHEALTH.ORG/)

HEP B TESTING: YES
HEP B TREATMENT: REFERS TO TRUMAN MEDICAL CENTER
HEP C TESTING: YES
HEP C TREATMENT: REFERS TO TRUMAN MEDICAL CENTER

SAMUEL U. RODGERS HEALTH CENTER (DOWNTOWN
CAMPUS)
825 EUCLID AVENUE
KANSAS CITY, MO 64124
PHONE: 816-474-4920

[HTTP://RODGERSHEALTH.ORG/](http://RODGERSHEALTH.ORG/)

HEP B TESTING: YES
HEP B TREATMENT: REFERS TO TRUMAN MEDICAL CENTER
HEP C TESTING: YES
HEP C TREATMENT: REFERS TO TRUMAN MEDICAL CENTER

SAMUEL U. RODGERS HEALTH CENTER (LAFAYETTE)
811-A SOUTH 13 HIGHWAY
LEXINGTON, MO 64067
PHONE: 660-259-3823

[HTTP://RODGERSHEALTH.ORG/](http://RODGERSHEALTH.ORG/)

HEP B TESTING: YES
HEP B TREATMENT: REFERS TO TRUMAN MEDICAL CENTER
HEP C TESTING: YES
HEP C TREATMENT: REFERS TO TRUMAN MEDICAL CENTER

SAMUEL U. RODGERS HEALTH CENTER (NORTHLAND)
4820-A NORTH OAK TRAFFICWAY
KANSAS CITY, MO 64118
PHONE: 816-413-0662

[HTTP://RODGERSHEALTH.ORG/](http://RODGERSHEALTH.ORG/)

HEP B TESTING: YES
HEP B TREATMENT: REFERS TO TRUMAN MEDICAL CENTER
HEP C TESTING: YES
HEP C TREATMENT: REFERS TO TRUMAN MEDICAL CENTER

SAMUEL U. RODGERS HEALTH CENTER (SHEFFIELD PLACE)
6604 E. 12TH STREET
KANSAS CITY, MO 64126
PHONE: 816-605-1140

[HTTP://RODGERSHEALTH.ORG/](http://RODGERSHEALTH.ORG/)

HEP B TESTING: YES
HEP B TREATMENT: REFERS TO TRUMAN MEDICAL CENTER
HEP C TESTING: YES
HEP C TREATMENT: REFERS TO TRUMAN MEDICAL CENTER

SAMUEL U. RODGERS HEALTH CENTER THERAPEUTIC
INTERVENTION CENTER
2701 EAST 31ST STREET
KANSAS CITY, MO 64128
PHONE: 816-861-7070

[HTTP://RODGERSHEALTH.ORG/](http://RODGERSHEALTH.ORG/)

HEP B TESTING: YES
HEP B TREATMENT: REFERS TO TRUMAN MEDICAL CENTER
HEP C TESTING: YES
HEP C TREATMENT: REFERS TO TRUMAN MEDICAL CENTER

SWOPE HEALTH CENTRAL
3801 BLUE PARKWAY
KANSAS CITY, MO 64130
PHONE: 816-923-5800

[HTTP://WWW.SWOPEHEALTH.ORG/](http://WWW.SWOPEHEALTH.ORG/)

HEP B TESTING: YES
HEP B TREATMENT: YES
HEP C TESTING: YES
HEP C TREATMENT: YES

SWOPE HEALTH EAST
17844 E. 23RD STREET SOUTH
INDEPENDENCE, MO 64057
PHONE: 816-922-1000

[HTTP://WWW.SWOPEHEALTH.ORG/](http://WWW.SWOPEHEALTH.ORG/)

HEP B TESTING: YES
HEP B TREATMENT: YES
HEP C TESTING: YES
HEP C TREATMENT: YES

FEDERALLY QUALIFIED HEALTH CENTERS

Kansas City Region (Page 2)

SWOPE HEALTH INDEPENDENCE

1638 WEST US HIGHWAY 24

INDEPENDENCE, MO 64050

PHONE: 816-627-2000

[HTTP://WWW.SWOPEHEALTH.ORG/](http://www.swopehealth.org/)

HEP B TESTING: YES

HEP B TREATMENT: YES

HEP C TESTING: YES

HEP C TREATMENT: YES

SWOPE MOBILE

3801 BLUE PARKWAY

KANSAS CITY, MO 64130

PHONE: 816-923-5800

[HTTP://WWW.SWOPEHEALTH.ORG/](http://www.swopehealth.org/)

HEP B TESTING: YES

HEP B TREATMENT: YES

HEP C TESTING: YES

HEP C TREATMENT: YES

SWOPE HEALTH NORTHLAND

4443 NORTHWEST GATEWAY

RIVERSIDE, MO 64150

PHONE: 816-627-2050

[HTTP://WWW.SWOPEHEALTH.ORG/](http://www.swopehealth.org/)

HEP B TESTING: YES

HEP B TREATMENT: YES

HEP C TESTING: YES

HEP C TREATMENT: YES

SWOPE HEALTH SOUTH

8825 TROOST AVENUE

KANSAS CITY, MO 64131

PHONE: 816-922-1050

[HTTP://WWW.SWOPEHEALTH.ORG/](http://www.swopehealth.org/)

HEP B TESTING: YES

HEP B TREATMENT: YES

HEP C TESTING: YES

HEP C TREATMENT: YES

SWOPE HEALTH WEST

6013 LEAVENWORTH RD.

KANSAS CITY, KS 66104

PHONE: 913-321-2200

[HTTP://WWW.SWOPEHEALTH.ORG/](http://www.swopehealth.org/)

HEP B TESTING: YES

HEP B TREATMENT: YES

HEP C TESTING: YES

HEP C TREATMENT: YES

SWOPE HEALTH WYANDOTTE

21 NORTH 12TH STREET, SUITE 400

KANSAS CITY, KS 66102

PHONE: 816-922-7600

[HTTP://WWW.SWOPEHEALTH.ORG/](http://www.swopehealth.org/)

HEP B TESTING: YES

HEP B TREATMENT: YES

HEP C TESTING: YES

HEP C TREATMENT: YES

FEDERALLY QUALIFIED HEALTH CENTERS

North Central Region (Page 1)

CENTRAL OZARKS MEDICAL CENTER AT THE LAKE
3870 COLUMBIA AVENUE
OSAGE BEACH, MO 65065
PHONE: 573-302-7490

WWW.CENTRALOZARKSMEDICALCENTER.COM

HEP B TESTING: YES

HEP B TREATMENT: REFERS TO SPECIALIST

HEP C TESTING: YES

HEP C TREATMENT: REFERS TO SPECIALIST

COMMUNITY HEALTH CENTER OF CENTRAL MISSOURI
104 NORTH GERHART ROAD
CALIFORNIA, MO 65018
PHONE: 573-796-2163

[HTTP://CHCCMO.ORG/](http://CHCCMO.ORG/)

HEP B TESTING: YES

HEP B TREATMENT: REFERS TO SPECIALIST

HEP C TESTING: YES

HEP C TREATMENT: REFERS TO SPECIALIST

COMMUNITY HEALTH CENTER OF CENTRAL MISSOURI
561 COMMONS DRIVE
FULTON, MO 65251
PHONE: 573-826-2700

[HTTP://CHCCMO.ORG/](http://CHCCMO.ORG/)

HEP B TESTING: YES

HEP B TREATMENT: REFERS TO SPECIALIST

HEP C TESTING: YES

HEP C TREATMENT: REFERS TO SPECIALIST

COMMUNITY HEALTH CENTER OF CENTRAL MISSOURI –
JEFFERSON CITY CLINIC
3400 WEST TRUMAN BOULEVARD
JEFFERSON CITY, MO 65109
PHONE: 573-632-2777

[HTTP://CHCCMO.ORG/](http://CHCCMO.ORG/)

HEP B TESTING: YES

HEP B TREATMENT: REFERS TO SPECIALIST

HEP C TESTING: YES

HEP C TREATMENT: REFERS TO SPECIALIST

COMMUNITY HEALTH CENTER OF CENTRAL MISSOURI
(ADMINISTRATION)
2730 W. MAIN STREET
JEFFERSON CITY, MO 65110
PHONE: 573-632-0243

[HTTP://CHCCMO.ORG/](http://CHCCMO.ORG/)

HEP B TESTING: YES

HEP B TREATMENT: REFERS TO SPECIALIST

HEP C TESTING: YES

HEP C TREATMENT: REFERS TO SPECIALIST

COMMUNITY HEALTH CENTER OF CENTRAL MISSOURI-LINN
CLINIC
1016 EAST MAIN STREET
LINN, MO 65051

PHONE: 573-897-4946

[HTTP://CHCCMO.ORG/](http://CHCCMO.ORG/)

HEP B TESTING: YES

HEP B TREATMENT: REFERS TO SPECIALIST

HEP C TESTING: YES

HEP C TREATMENT: REFERS TO SPECIALIST

FAMILY HEALTH CENTER
1001 WEST WORLEY STREET
COLUMBIA, MO 65203
PHONE: 573-214-2314 OR 877-677-4342

[HTTP://WWW.FHCMO.ORG/](http://WWW.FHCMO.ORG/)

HEP B TESTING: YES

HEP B TREATMENT: REFERS TO COLUMBIA

HEP C TESTING: YES

HEP C TREATMENT: REFERS TO COLUMBIA

FAMILY HEALTH CENTER @ MARCELINE
225 W. HAYDEN STREET, SUITE 200
MARCELINE, MO 64658
PHONE: 660-376-2038

[HTTP://WWW.FHCMO.ORG/](http://WWW.FHCMO.ORG/)

HEP B TESTING: YES

HEP B TREATMENT: REFERS TO COLUMBIA

HEP C TESTING: YES

HEP C TREATMENT: REFERS TO COLUMBIA

KATY TRAIL COMMUNITY HEALTH – SEDALIA
821 WESTWOOD DRIVE
SEDALIA, MO 65301
PHONE: 660-826-1571 OR 877-733-5824

[HTTP://WWW.KATYTRAILCOMMUNITYHEALTH.ORG/](http://WWW.KATYTRAILCOMMUNITYHEALTH.ORG/)

HEP B TESTING: YES

HEP B TREATMENT: REFERS TO SPECIALIST

HEP C TESTING: YES

HEP C TREATMENT: REFERS TO SPECIALIST

KATY TRAIL COMMUNITY HEALTH-PRAIRIE HILLS CLINIC
112 NORTH STATE HWY 5
VERSAILLES, MO 65084
PHONE: 573-378-2351 OR 877-733-5824

[HTTP://WWW.KATYTRAILCOMMUNITYHEALTH.ORG/](http://WWW.KATYTRAILCOMMUNITYHEALTH.ORG/)

HEP B TESTING: YES

HEP B TREATMENT: REFERS TO SPECIALIST

HEP C TESTING: YES

HEP C TREATMENT: REFERS TO SPECIALIST

FEDERALLY QUALIFIED HEALTH CENTERS

North Central Region (Page 2)

KATY TRAIL COMMUNITY HEALTH-WARSAW

1330 COMMERCIAL STREET

WARSAW, MO 65355

PHONE: 660-438-2717 OR 877-733-5824

[HTTP://WWW.KATYTRAILCOMMUNITYHEALTH.ORG/](http://WWW.KATYTRAILCOMMUNITYHEALTH.ORG/)

HEP B TESTING: YES

HEP B TREATMENT: REFERS TO SPECIALIST

HEP C TESTING: YES

HEP C TREATMENT: REFERS TO SPECIALIST

KIRKSVILLE VETERANS CLINIC

1510 CROWN DRIVE

KIRKSVILLE, MO 63501

PHONE: 660-627-8387

WWW.COLUMBIAMO.VA.GOV/LOCATIONS/KIRKSVILLE.ASP

HEP B TESTING: YES

HEP B TREATMENT: YES

HEP C TESTING: YES

HEP C TREATMENT: YES

NORTHEAST FAMILY HEALTH – EDINA

100 EAST JACKSON STREET

EDINA, MO 63537

PHONE: 660-397-3517

[HTTP://NMHCINC.ORG/](http://NMHCINC.ORG/)

HEP B TESTING: YES

HEP B TREATMENT: REFERS TO SPECIALIST

HEP C TESTING: YES

HEP C TREATMENT: REFERS TO SPECIALIST

NORTHEAST FAMILY HEALTH – KIRKSVILLE

1506 CROWN DRIVE

KIRKSVILLE, MO 63501

PHONE: 660-627-4493

[HTTP://NMHCINC.ORG/](http://NMHCINC.ORG/)

HEP B TESTING: YES

HEP B TREATMENT: REFERS TO SPECIALIST

HEP C TESTING: YES

HEP C TREATMENT: REFERS TO SPECIALIST

NORTHEAST FAMILY HEALTH – MILAN

52334 BUSINESS HWY 5

MILAN, MO 63556

PHONE: 660-265-1042

[HTTP://NMHCINC.ORG/](http://NMHCINC.ORG/)

HEP B TESTING: YES

HEP B TREATMENT: REFERS TO SPECIALIST

HEP C TESTING: YES

HEP C TREATMENT: REFERS TO SPECIALIST

FEDERALLY QUALIFIED HEALTH CENTERS

Northwest Region (Page 1)

BRAYMER CLINIC
109 MAIN STREET
BRAYMER, MO 64624
PHONE: 660-645-2218
[HTTP://WWW.NWHEALTH-SERVICES.ORG/](http://www.nwhealth-services.org/)
HEP B TESTING: YES
HEP B TREATMENT: REFERS TO SPECIALIST
HEP C TESTING: YES
HEP C TREATMENT: REFERS TO SPECIALIST

CAINSVILLE MEDICAL CLINIC
707 VICTORY LANE
CAINSVILLE, MO 64632
PHONE: 660-893-5750
[HTTP://WWW.NWHEALTH-SERVICES.ORG/](http://www.nwhealth-services.org/)
HEP B TESTING: YES
HEP B TREATMENT: REFERS TO SPECIALIST
HEP C TESTING: YES
HEP C TREATMENT: REFERS TO SPECIALIST

FAMILY MEDICINE ASSOCIATES
2303 VILLAGE DRIVE
ST. JOSEPH, MO 64506
PHONE: 816-232-6818
[HTTP://WWW.NWHEALTH-SERVICES.ORG/](http://www.nwhealth-services.org/)
HEP B TESTING: YES
HEP B TREATMENT: REFERS TO SPECIALIST
HEP C TESTING: YES
HEP C TREATMENT: REFERS TO SPECIALIST

HAMILTON MEDICAL CLINIC
ONE CROSS STREET
HAMILTON, MO 64644
PHONE: 816-583-2151
[HTTP://WWW.NWHEALTH-SERVICES.ORG/](http://www.nwhealth-services.org/)
HEP B TESTING: YES
HEP B TREATMENT: REFERS TO SPECIALIST
HEP C TESTING: YES
HEP C TREATMENT: REFERS TO SPECIALIST

H.O.M.E UNIT (HOMELESS OUTREACH MEDICAL EXPRESS)
904 SOUTH 10TH STREET, SUITE A
ST. JOSEPH, MO 64503
PHONE: 816-232-8536
[HTTP://WWW.NWHEALTH-SERVICES.ORG/](http://www.nwhealth-services.org/)
HEP B TESTING: YES
HEP B TREATMENT: REFERS TO SPECIALIST
HEP C TESTING: YES
HEP C TREATMENT: REFERS TO SPECIALIST

KING CITY CLINIC
305 RHODE ISLAND
KING CITY, MO 64463
PHONE: 660-535-4347
[HTTP://WWW.NWHEALTH-SERVICES.ORG/](http://www.nwhealth-services.org/)
HEP B TESTING: YES
HEP B TREATMENT: REFERS TO SPECIALIST
HEP C TESTING: YES
HEP C TREATMENT: REFERS TO SPECIALIST

MOUND CITY (MEDICAL & DENTAL) CLINIC
1303 STATE STREET
MOUND CITY, MO 64470
PHONE: 660-442-5464 OR 660-442-5507
[HTTP://WWW.NWHEALTH-SERVICES.ORG/](http://www.nwhealth-services.org/)
HEP B TESTING: YES
HEP B TREATMENT: YES
HEP C TESTING: YES
HEP C TREATMENT: YES

NORTH END HEALTH CENTER
1515 ST. JOSEPH AVENUE
ST. JOSEPH, MO 64505
PHONE: 816-233-3338
[HTTP://WWW.NWHEALTH-SERVICES.ORG/](http://www.nwhealth-services.org/)
HEP B TESTING: YES
HEP B TREATMENT: REFERS TO SPECIALIST
HEP C TESTING: YES
HEP C TREATMENT: REFERS TO SPECIALIST

NORTHWEST BEHAVIORAL HEALTH SERVICES
2303 VILLAGE DRIVE
ST. JOSEPH, MO 64506
PHONE: 816-232-4417
[HTTP://WWW.NWHEALTH-SERVICES.ORG/](http://www.nwhealth-services.org/)
HEP B TESTING: YES
HEP B TREATMENT: REFERS TO SPECIALIST
HEP C TESTING: YES
HEP C TREATMENT: REFERS TO SPECIALIST

NORTHWEST HEALTH SERVICES, INC.
2303 VILLAGE DRIVE
ST. JOSEPH, MO 64506
PHONE: 816-271-8261
[HTTP://WWW.NWHEALTH-SERVICES.ORG/](http://www.nwhealth-services.org/)
HEP B TESTING: YES
HEP B TREATMENT: REFERS TO SPECIALIST
HEP C TESTING: YES
HEP C TREATMENT: REFERS TO SPECIALIST

FEDERALLY QUALIFIED HEALTH CENTERS

Northwest Region (Page 2)

SAVANNAH MEDICAL CLINIC

803 HIGHWAY 71 WEST

SAVANNAH, MO 64485

PHONE: 816-324-3121

[HTTP://WWW.NWHEALTH-SERVICES.ORG/](http://www.nwhealth-services.org/)

HEP B TESTING: YES

HEP B TREATMENT: IF NEEDED

HEP C TESTING: YES

HEP C TREATMENT: IF NEEDED

SOUTH SIDE HEALTH CENTER

5001 LAKE AVENUE

ST. JOSEPH, MO 64504

PHONE: 816-238-7788

[HTTP://WWW.NWHEALTH-SERVICES.ORG/](http://www.nwhealth-services.org/)

HEP B TESTING: YES

HEP B TREATMENT: REFERS TO SPECIALIST

HEP C TESTING: YES

HEP C TREATMENT: REFERS TO SPECIALIST

FEDERALLY QUALIFIED HEALTH CENTERS

Southeast Region (Page 1)

ANNAPOLIS FAMILY CLINIC
202 ALLEN STREET
ANNAPOLIS, MO 63620
PHONE: 573-598-4213 OR 866-598-4213
[HTTP://WWW.MOHIGH.ORG/](http://www.mohigh.org/)
HEP B TESTING: YES
HEP B TREATMENT: REFERS TO SPECIALIST
HEP C TESTING: YES
HEP C TREATMENT: REFERS TO SPECIALIST

BENTON MEDICAL AND DENTAL CENTER
6724 STATE HIGHWAY 77
BENTON, MO 63736
PHONE: 573-545-4200 OR 573-545-4191
[HTTP://SEMOHEALTHNETWORK.ORG/](http://semohealthnetwork.org/)
HEP B TESTING: YES
HEP B TREATMENT: REFERS TO SPECIALIST
HEP C TESTING: YES
HEP C TREATMENT: REFERS TO SPECIALIST

BENTON WELLNESS CENTER
6738 STATE HIGHWAY 77
BENTON, MO 63736
PHONE: 573-313-2530
[HTTP://SEMOHEALTHNETWORK.ORG/](http://semohealthnetwork.org/)
HEP B TESTING: YES
HEP B TREATMENT: REFERS TO SPECIALIST
HEP C TESTING: YES
HEP C TREATMENT: REFERS TO SPECIALIST

BERNIE MEDICAL & DENTAL CENTER
741 S. WALNUT STREET
BERNIE, MO 63822
PHONE: 573-293-6836 OR 573-293-6930
[HTTP://SEMOHEALTHNETWORK.ORG/](http://semohealthnetwork.org/)
HEP B TESTING: YES
HEP B TREATMENT: REFERS TO SPECIALIST
HEP C TESTING: YES
HEP C TREATMENT: REFERS TO SPECIALIST

BIG SPRINGS MEDICAL CLINIC
405 MAIN STREET
VAN BUREN, MO 63965
PHONE: 573-323-4253 OR 877-272-9621
[HTTP://WWW.MOHIGH.ORG/](http://www.mohigh.org/)
HEP B TESTING: YES
HEP B TREATMENT: REFERS TO SPECIALIST
HEP C TESTING: YES
HEP C TREATMENT: REFERS TO SPECIALIST

COMMUNITY OUTREACH
421 SEMO DRIVE
NEW MADRID, MO 63869
PHONE: 573-521-0114
[HTTP://SEMOHEALTHNETWORK.ORG/](http://semohealthnetwork.org/)
HEP B TESTING: YES
HEP B TREATMENT: REFERS TO SPECIALIST
HEP C TESTING: YES
HEP C TREATMENT: REFERS TO SPECIALIST

CROSS TRAILS MEDICAL CENTER & DENTAL CLINIC
307 GABRIEL
ADVANCE, MO 63730
PHONE: 573-722-3034
[HTTP://WWW.CROSSTRAILS.US/](http://www.crosstrails.us/)
HEP B TESTING: YES
HEP B TREATMENT: NO
HEP C TESTING: YES
HEP C TREATMENT: REFERS TO CAPE GIRARDEAU CLINIC

CROSS TRAILS MEDICAL CENTER & DENTAL CLINIC
408 S. BROADVIEW STREET
CAPE GIRARDEAU, MO 63703
PHONE: 573-332-0808 OR 573-334-4753
[HTTP://WWW.CROSSTRAILS.US/](http://www.crosstrails.us/)
HEP B TESTING: YES
HEP B TREATMENT: NO
HEP C TESTING: YES
HEP C TREATMENT: YES

CROSS TRAILS MEDICAL CENTER & DENTAL CLINIC
109 HIGHWAY 51 NORTH
MARBLE HILL, MO 63764
PHONE: 573-238-2725 OR 573-238-1110
[HTTP://WWW.CROSSTRAILS.US/](http://www.crosstrails.us/)
HEP B TESTING: YES
HEP B TREATMENT: NO
HEP C TESTING: YES
HEP C TREATMENT: YES - REFERS TO CAPE GIRARDEAU CLINIC

CROSS TRAILS MEDICAL CENTER & DENTAL CLINIC
1314 BRENDA AVENUE
PERRYVILLE, MO 63775
PHONE: 573-517-0405
[HTTP://WWW.CROSSTRAILS.US/](http://www.crosstrails.us/)
HEP B TESTING: YES
HEP B TREATMENT: NO
HEP C TESTING: YES
HEP C TREATMENT: YES - REFERS TO CAPE GIRARDEAU HEP C CLINIC

FEDERALLY QUALIFIED HEALTH CENTERS

Southeast Region (Page 2)

ELLINGTON FAMILY CLINIC
61 HWY Y
ELLINGTON, MO 63638
PHONE: 573-663-2525 OR 877-559-9934
[HTTP://WWW.MOHIGH.ORG/](http://www.mohigh.org/)
HEP B TESTING: YES
HEP B TREATMENT: REFERS TO SPECIALIST
HEP C TESTING: YES
HEP C TREATMENT: REFERS TO SPECIALIST

GREAT MINES HEALTH CENTER, INC.
#1 SOUTHTOWNE DRIVE
POTOSI, MO 63664
PHONE: 573-438-9355 OR 573-438-8401
[HTTP://WWW.GMHCENTER.ORG/](http://www.gmhcenter.org/)
HEP B TESTING: YES
HEP B TREATMENT: REFERS TO SPECIALIST
HEP C TESTING: YES
HEP C TREATMENT: REFERS TO SPECIALIST

IRON COUNTY MEDICAL CLINIC
315 WEST MULBERRY
PILOT KNOB, MO 63663
PHONE: 573-546-0602 OR 866-748-2725
[HTTP://WWW.MOHIGH.ORG/](http://www.mohigh.org/)
HEP B TESTING: YES
HEP B TREATMENT: REFERS TO SPECIALIST
HEP C TESTING: YES
HEP C TREATMENT: REFERS TO SPECIALIST

MATTHEWS WELLNESS CENTER
301 W. MAIN STREET
MATTHEWS, MO 63867
PHONE: 573-481-0166
[HTTP://SEMOHEALTHNETWORK.ORG/](http://semohealthnetwork.org/)
HEP B TESTING: YES
HEP B TREATMENT: REFERS TO SPECIALIST
HEP C TESTING: YES
HEP C TREATMENT: REFERS TO SPECIALIST

MISSOURI HIGHLANDS HEALTH CARE
110 S. 2ND STREET
ELLINGTON, MO 63638
PHONE: 573-663-2313 OR 877-648-6934
[HTTP://WWW.MOHIGH.ORG/](http://www.mohigh.org/)
HEP B TESTING: YES
HEP B TREATMENT: REFERS TO SPECIALIST
HEP C TESTING: YES
HEP C TREATMENT: REFERS TO SPECIALIST

MISSOURI HIGHLANDS MEDICAL CLINIC (POPLAR BLUFF)
225 PHYSICIANS PARK DRIVE, SUITE 303
POPLAR BLUFF, MO 63901
PHONE: 573-785-6536 OR 866-902-0582
[HTTP://WWW.MOHIGH.ORG/](http://www.mohigh.org/)
HEP B TESTING: YES
HEP B TREATMENT: REFERS TO SPECIALIST
HEP C TESTING: YES
HEP C TREATMENT: REFERS TO SPECIALIST

NAYLOR MEDICAL CLINIC
220 E. BROAD STREET
NAYLOR, MO 63953
PHONE: 573-399-2311 OR 877-302-3719
[HTTP://WWW.MOHIGH.ORG/](http://www.mohigh.org/)
HEP B TESTING: YES
HEP B TREATMENT: REFERS TO SPECIALIST
HEP C TESTING: YES
HEP C TREATMENT: REFERS TO SPECIALIST

NEW MADRID MEDICAL
421 SEMO DRIVE
NEW MADRID, MO 63869
PHONE: 573-748-2592
[HTTP://SEMOHEALTHNETWORK.ORG/](http://semohealthnetwork.org/)
HEP B TESTING: YES
HEP B TREATMENT: REFERS TO SPECIALIST
HEP C TESTING: YES
HEP C TREATMENT: REFERS TO SPECIALIST

NEW MADRID WELLNESS CENTER
421 SEMO DRIVE - REAR
NEW MADRID, MO 63869
PHONE: 573-748-7694
[HTTP://SEMOHEALTHNETWORK.ORG/](http://semohealthnetwork.org/)
HEP B TESTING: YES
HEP B TREATMENT: REFERS TO SPECIALIST
HEP C TESTING: YES
HEP C TREATMENT: REFERS TO SPECIALIST

OTTO BEAN MEDICAL AND DENTAL CENTER
500 RUSSELL STREET
KENNETT, MO 63857
PHONE: 573-717-1332 OR 573-888-3000
[HTTP://SEMOHEALTHNETWORK.ORG/](http://semohealthnetwork.org/)
HEP B TESTING: YES
HEP B TREATMENT: REFERS TO SPECIALIST
HEP C TESTING: YES
HEP C TREATMENT: REFERS TO SPECIALIST

FEDERALLY QUALIFIED HEALTH CENTERS

Southeast Region (Page 3)

PORTAGEVILLE MEDICAL
314 EAST MAIN STREET
PORTAGEVILLE, MO 63873
PHONE: 573-379-5929

[HTTP://SEMOHEALTHNETWORK.ORG/](http://SEMOHEALTHNETWORK.ORG/)

HEP B TESTING: YES
HEP B TREATMENT: REFERS TO SPECIALIST
HEP C TESTING: YES
HEP C TREATMENT: REFERS TO SPECIALIST

SEMO HEALTH NETWORK (CORPORATE OFFICE-NORTH)
6738 STATE HIGHWAY 77, SUITE A
BENTON, MO 63736
PHONE: 573-313-2453

[HTTP://SEMOHEALTHNETWORK.ORG/](http://SEMOHEALTHNETWORK.ORG/)

HEP B TESTING: YES
HEP B TREATMENT: REFERS TO SPECIALIST
HEP C TESTING: YES
HEP C TREATMENT: REFERS TO SPECIALIST

SENATH MEDICAL
102 N. MARKET STREET
SENATH, MO 63876
PHONE: 573-738-2848

[HTTP://SEMOHEALTHNETWORK.ORG/](http://SEMOHEALTHNETWORK.ORG/)

HEP B TESTING: YES
HEP B TREATMENT: REFERS TO SPECIALIST
HEP C TESTING: YES
HEP C TREATMENT: REFERS TO SPECIALIST

SIKESTON MEDICAL
200 SOUTHLAND DRIVE
SIKESTON, MO 63801
PHONE: 573-472-1770

[HTTP://SEMOHEALTHNETWORK.ORG/](http://SEMOHEALTHNETWORK.ORG/)

HEP B TESTING: YES
HEP B TREATMENT: REFERS TO SPECIALIST
HEP C TESTING: YES
HEP C TREATMENT: REFERS TO SPECIALIST

VALLEY SPRINGS MEDICAL CLINIC
221 COUNTY ROAD 816
BLACK, MO 63625
PHONE: 573-269-1035 OR 866-305-8115

[HTTP://WWW.MOHIGH.ORG/](http://WWW.MOHIGH.ORG/)

HEP B TESTING: YES
HEP B TREATMENT: REFERS TO SPECIALIST
HEP C TESTING: YES
HEP C TREATMENT: REFERS TO SPECIALIST

VIBURNUM MEDICAL CLINIC
18 VIBURNUM CENTER ROAD
VIBURNUM, MO 65566
PHONE: 573-244-5406 OR 866-517-1807

[HTTP://WWW.MOHIGH.ORG/](http://WWW.MOHIGH.ORG/)

HEP B TESTING: YES
HEP B TREATMENT: REFERS TO SPECIALIST
HEP C TESTING: YES
HEP C TREATMENT: REFERS TO SPECIALIST

WAYNE COUNTY MEDICAL CLINIC
135 MAIN STREET
GREENVILLE, MO 63944
PHONE: 573-224-3660 OR 877-302-3720

[HTTP://WWW.MOHIGH.ORG/](http://WWW.MOHIGH.ORG/)

HEP B TESTING: YES
HEP B TREATMENT: REFERS TO SPECIALIST
HEP C TESTING: YES
HEP C TREATMENT: REFERS TO SPECIALIST

FEDERALLY QUALIFIED HEALTH CENTERS

St. Louis Region (Page 1)

AFFINIA HEALTHCARE – BENTON HEALTH CENTER

2220 LEMP AVENUE
ST. LOUIS, MO 63104
PHONE: 314-898-1700
[HTTP://AFFINIAHEALTHCARE.ORG/](http://AFFINIAHEALTHCARE.ORG/)

HEP B TESTING: YES
HEP B TREATMENT: YES
HEP C TESTING: YES
HEP C TREATMENT: YES

AFFINIA HEALTHCARE - BIDDLE LOCATION

1717 BIDDLE ST.
ST. LOUIS, MO 63106
PHONE: 314-898-1700
[HTTP://AFFINIAHEALTHCARE.ORG/](http://AFFINIAHEALTHCARE.ORG/)

HEP B TESTING: YES
HEP B TREATMENT: YES
HEP C TESTING: YES
HEP C TREATMENT: YES

AFFINIA HEALTHCARE - BROADWAY LOCATION

3930 S. BROADWAY
ST. LOUIS, MO 63110
PHONE: 314-898-1700
[HTTP://AFFINIAHEALTHCARE.ORG/](http://AFFINIAHEALTHCARE.ORG/)

HEP B TESTING: YES
HEP B TREATMENT: YES
HEP C TESTING: YES
HEP C TREATMENT: YES

AFFINIA HEALTHCARE - FLORISSANT LOCATION

4414 N. FLORISSANT
ST. LOUIS, MO 63107
PHONE: 314-898-1700
[HTTP://AFFINIAHEALTHCARE.ORG/](http://AFFINIAHEALTHCARE.ORG/)

HEP B TESTING: YES
HEP B TREATMENT: YES
HEP C TESTING: YES
HEP C TREATMENT: YES

AFFINIA HEALTHCARE, INC. (ADMINISTRATION)

1717 BIDDLE STREET
ST. LOUIS, MO 63106
PHONE: 314-898-1700
[HTTP://AFFINIAHEALTHCARE.ORG/](http://AFFINIAHEALTHCARE.ORG/)

HEP B TESTING: YES
HEP B TREATMENT: YES
HEP C TESTING: YES
HEP C TREATMENT: YES

AFFINIA PROGRAM MANAGEMENT OFFICE

2524 HADLEY STREET
ST. LOUIS, MO 63106
PHONE: 314-898-1700
[HTTP://AFFINIAHEALTHCARE.ORG/](http://AFFINIAHEALTHCARE.ORG/)

HEP B TESTING: YES
HEP B TREATMENT: YES
HEP C TESTING: YES
HEP C TREATMENT: YES

BETTY JEAN KERR PEOPLE'S HEALTH CENTERS

5701 DELMAR BOULEVARD
ST. LOUIS, MO 63112
PHONE: 314-367-7848
[HTTP://WWW.PHCENTERS.ORG/](http://WWW.PHCENTERS.ORG/)

HEP B TESTING: YES - WITH REFERRAL FROM DOCTOR
HEP B TREATMENT: NO
HEP C TESTING: YES - WITH REFERRAL FROM DOCTOR
HEP C TREATMENT: NO

BETTY JEAN KERR PEOPLE'S HEALTH CENTERS NORTH SITE

11642 WEST FLORISSANT AVENUE
FLORISSANT, MO 63033
PHONE: 314-838-8220
[HTTP://WWW.PHCENTERS.ORG/](http://WWW.PHCENTERS.ORG/)

HEP B TESTING: YES - WITH REFERRAL FROM DOCTOR
HEP B TREATMENT: NO
HEP C TESTING: YES - WITH REFERRAL FROM DOCTOR
HEP C TREATMENT: NO

BETTY JEAN KERR PEOPLE'S HEALTH CENTERS WEST SITE

7200 MANCHESTER ROAD
MAPLEWOOD, MO 63143
PHONE: 314-781-9162
[HTTP://WWW.PHCENTERS.ORG/](http://WWW.PHCENTERS.ORG/)

HEP B TESTING: YES - WITH REFERRAL FROM DOCTOR
HEP B TREATMENT: NO
HEP C TESTING: YES - WITH REFERRAL FROM DOCTOR
HEP C TREATMENT: NO

COMTREA

227 EAST MAIN STREET
FESTUS, MO 63028
PHONE: 636-931-2700
[HTTP://WWW.COMTREA.ORG/](http://WWW.COMTREA.ORG/)

HEP B TESTING: YES
HEP B TREATMENT: YES
HEP C TESTING: YES
HEP C TREATMENT: YES

FEDERALLY QUALIFIED HEALTH CENTERS

St. Louis Region (Page 2)

COMTREA
4 HICKORY RIDGE ROAD
HILLSBORO, MO 63050
PHONE: 636-789-3372
[HTTP://WWW.COMTREA.ORG/](http://www.comtrea.org/)
HEP B TESTING: YES
HEP B TREATMENT: YES
HEP C TESTING: YES
HEP C TREATMENT: YES

COMTREA
100 OSAGE EXECUTIVE CIRCLE
HOUSE SPRINGS, MO 63051
PHONE: 636-677-9977
[HTTP://WWW.COMTREA.ORG/](http://www.comtrea.org/)
HEP B TESTING: YES
HEP B TREATMENT: YES
HEP C TESTING: YES
HEP C TREATMENT: YES

COMTREA
324 EMERSON ROAD
HIGH RIDGE, MO 63049
PHONE: 636-677-9977
[HTTP://WWW.COMTREA.ORG/](http://www.comtrea.org/)
HEP B TESTING: YES
HEP B TREATMENT: YES
HEP C TESTING: YES
HEP C TREATMENT: YES

CRIDER HEALTH CENTER (PRIMARY CARE)
1915 BRUNE PARKWAY
WARRENTON, MO 63383
PHONE: 636-456-1500
[HTTP://WWW.CRIDERCENTER.ORG/](http://www.cridercenter.org/)
HEP B TESTING: YES
HEP B TREATMENT: REFERS TO SPECIALIST
HEP C TESTING: YES
HEP C TREATMENT: REFERS TO SPECIALIST

CRIDER HEALTH CENTER (PRIMARY CARE, BEHAVIORAL
HEALTH, & DENTAL)
1780 OLD HWY 50 EAST, SUITE 102 & 111
UNION, MO 63084
PHONE: 636-584-0859 OR 636-583-2251
[HTTP://WWW.CRIDERCENTER.ORG/](http://www.cridercenter.org/)
HEP B TESTING: YES
HEP B TREATMENT: REFERS TO SPECIALIST
HEP C TESTING: YES
HEP C TREATMENT: REFERS TO SPECIALIST

CRIDER HEALTH CENTER
1032 CROSSWINDS COURT
WENTZVILLE, MO 63385
PHONE: 636-332-6000 OR 800-574-2422
[HTTP://WWW.CRIDERCENTER.ORG/](http://www.cridercenter.org/)
HEP B TESTING: YES
HEP B TREATMENT: REFERS TO SPECIALIST
HEP C TESTING: YES
HEP C TREATMENT: REFERS TO SPECIALIST

FAMILY CARE HEALTH CENTERS
401 HOLLY HILLS AVENUE
ST. LOUIS, MO 63111
PHONE: 314-481-1615
[HTTP://WWW.FCHCSTL.ORG/](http://www.fchcstl.org/)
HEP B TESTING: YES
HEP B TREATMENT: REFERS TO SPECIALIST
HEP C TESTING: YES
HEP C TREATMENT: REFERS TO SPECIALIST

FAMILY CARE HEALTH CENTERS – CARONDELET
401 HOLLY HILLS AVENUE
ST. LOUIS, MO 63111
PHONE: 314-353-5190 OR 314-678-2971
[HTTP://WWW.FCHCSTL.ORG/](http://www.fchcstl.org/)
HEP B TESTING: YES
HEP B TREATMENT: REFERS TO SPECIALIST
HEP C TESTING: YES
HEP C TREATMENT: REFERS TO SPECIALIST

FAMILY CARE HEALTH CENTERS – FPSE (MEDICAL & DENTAL)
4352 MANCHESTER AVENUE
ST. LOUIS, MO 63110
PHONE: 314-531-5444 OR 314-371-0336
[HTTP://WWW.FCHCSTL.ORG/](http://www.fchcstl.org/)
HEP B TESTING: YES
HEP B TREATMENT: REFERS TO SPECIALIST
HEP C TESTING: YES
HEP C TREATMENT: REFERS TO SPECIALIST

FLORENCE HILL HEALTH CENTER
5541 RIVERVIEW DRIVE
ST. LOUIS, MO 63120
PHONE: 314-389-4566
[HTTP://WWW.MHDCHC.ORG/](http://www.mhdchc.org/)
HEP B TESTING: YES
HEP B TREATMENT: YES
HEP C TESTING: YES
HEP C TREATMENT: YES

FEDERALLY QUALIFIED HEALTH CENTERS

St. Louis Region (Page 3)

HOMER G. PHILLIPS HEALTH CENTER

2425 N. WHITTIER

ST. LOUIS, MO 63113

PHONE: 314-371-3100

[HTTP://WWW.MHDCHC.ORG/](http://www.mhdchc.org/)

HEP B TESTING: YES

HEP B TREATMENT: YES

HEP C TESTING: YES

HEP C TREATMENT: YES

MYRTLE HILLIARD DAVIS COMPREHENSIVE HEALTH CENTER

5471 DR. MARTIN LUTHER KING DRIVE

ST. LOUIS, MO 63112

PHONE: 314-367-5820

[HTTP://WWW.MHDCHC.ORG/](http://www.mhdchc.org/)

HEP B TESTING: YES

HEP B TREATMENT: YES

HEP C TESTING: YES

HEP C TREATMENT: YES

FEDERALLY QUALIFIED HEALTH CENTERS

Southwest Region (Page 1)

ACCESS FAMILY CARE
4301 DONIPHAN DRIVE
NEOSHO, MO 64850
PHONE: 417-451-9450

[HTTP://WWW.ACCESSFAMILYCARE.ORG/](http://www.accessfamilycare.org/)

HEP B TESTING: YES

HEP B TREATMENT: REFERS TO SPECIALIST

HEP C TESTING: YES

HEP C TREATMENT: REFERS TO SPECIALIST

ACCESS FAMILY CARE – ANDERSON (MEDICAL & DENTAL)
927 N. HWY 71 BUSINESS
ANDERSON, MO 64831

PHONE: 417-845-8300 OR 417-845-2273

[HTTP://WWW.ACCESSFAMILYCARE.ORG/](http://www.accessfamilycare.org/)

HEP B TESTING: YES

HEP B TREATMENT: REFERS TO SPECIALIST

HEP C TESTING: YES

HEP C TREATMENT: REFERS TO SPECIALIST

ACCESS FAMILY CARE – CASSVILLE (MEDICAL & DENTAL)
4016 MAIN STREET
CASSVILLE, MO 62625
PHONE: 417-847-0057

[HTTP://WWW.ACCESSFAMILYCARE.ORG/](http://www.accessfamilycare.org/)

HEP B TESTING: YES

HEP B TREATMENT: REFERS TO SPECIALIST

HEP C TESTING: YES

HEP C TREATMENT: REFERS TO SPECIALIST

ACCESS FAMILY CARE – JOPLIN (MEDICAL)
530 S MAIDEN LANE
JOPLIN, MO 64801
PHONE: 417-782-6200

[HTTP://WWW.ACCESSFAMILYCARE.ORG/](http://www.accessfamilycare.org/)

HEP B TESTING: YES

HEP B TREATMENT: REFERS TO SPECIALIST

HEP C TESTING: YES

HEP C TREATMENT: REFERS TO SPECIALIST

ACCESS FAMILY CARE – JOPLIN (OB/GYN)
530 S. MAIDEN LANE
JOPLIN, MO 64801
PHONE: 417-782-4625

[HTTP://WWW.ACCESSFAMILYCARE.ORG/](http://www.accessfamilycare.org/)

HEP B TESTING: YES

HEP B TREATMENT: REFERS TO SPECIALIST

HEP C TESTING: YES

HEP C TREATMENT: REFERS TO SPECIALIST

ACCESS FAMILY CARE – JOPLIN (PEDIATRICS)
530 S. MAIDEN LANE
JOPLIN, MO 64801
PHONE: 417-659-9100

[HTTP://WWW.ACCESSFAMILYCARE.ORG/](http://www.accessfamilycare.org/)

HEP B TESTING: YES

HEP B TREATMENT: REFERS TO SPECIALIST

HEP C TESTING: YES

HEP C TREATMENT: REFERS TO SPECIALIST

ACCESS FAMILY CARE – NEOSHO (MEDICAL)
412 E. MCKINNEY STREET
NEOSHO, MO 64850

PHONE: 417-451-4447

[HTTP://WWW.ACCESSFAMILYCARE.ORG/](http://www.accessfamilycare.org/)

HEP B TESTING: YES

HEP B TREATMENT: REFERS TO SPECIALIST

HEP C TESTING: YES

HEP C TREATMENT: REFERS TO SPECIALIST

CENTRAL OZARKS MEDICAL & DENTAL CLINIC
304 WEST WASHINGTON STREET
RICHLAND, MO 65556
PHONE: 573-765-5141 OR 573-765-2510

[WWW.CENTRALOZARKSMEDICALCENTER.COM/HOME.HTML](http://www.centralozarksmedicalcenter.com/home.html)

HEP B TESTING: YES

HEP B TREATMENT: REFERS TO SPECIALIST

HEP C TESTING: YES

HEP C TREATMENT: REFERS TO SPECIALIST

CENTRAL OZARKS MEDICAL CENTER
304 WEST WASHINGTON STREET
RICHLAND, MO 65556
PHONE: 573-765-5131

[HTTP://WWW.CENTRALOZARKSMEDICALCENTER.COM](http://www.centralozarksmedicalcenter.com)

HEP B TESTING: YES

HEP B TREATMENT: REFERS TO SPECIALIST

HEP C TESTING: YES

HEP C TREATMENT: REFERS TO SPECIALIST

FORDLAND CLINIC
1059 BARTON DRIVE
FORDLAND, MO 65652
PHONE: 417-767-2273 OR 417-767-2100

[HTTP://FORDLANDCLINIC.ORG/](http://fordlandclinic.org/)

HEP B TESTING: YES

HEP B TREATMENT: NO

HEP C TESTING: YES

HEP C TREATMENT: YES

FEDERALLY QUALIFIED HEALTH CENTERS

Southwest Region (Page 2)

JORDAN VALLEY COMMUNITY HEALTH – MARSHFIELD
1166 BANNING STREET
MARSHFIELD, MO 65706
PHONE: 417-831-0150

[HTTP://JORDANVALLEY.ORG/](http://jordanvalley.org/)

HEP B TESTING: YES

HEP B TREATMENT: REFERS TO SPECIALIST

HEP C TESTING: YES

HEP C TREATMENT: REFERS TO SPECIALIST

JORDAN VALLEY COMMUNITY HEALTH CENTER
440 E. TAMPA STREET
SPRINGFIELD, MO 65806
PHONE: 417-831-0150

[HTTP://JORDANVALLEY.ORG/](http://jordanvalley.org/)

HEP B TESTING: YES

HEP B TREATMENT: REFERS TO SPECIALIST

HEP C TESTING: YES

HEP C TREATMENT: REFERS TO SPECIALIST

MISSOURI OZARKS COMMUNITY HEALTH
504 NW 10TH AVENUE
AVA, MO 65608
PHONE: 417-683-4831 OR 417-683-5739

[HTTP://MOCH.US/](http://moch.us/)

HEP B TESTING: YES

HEP B TREATMENT: NO, BUT CAN PROVIDE MEDS/LABS
AFTER PLAN OF TREATMENT IS SET BY SPECIALIST

HEP C TESTING: YES

HEP C TREATMENT: NO, BUT CAN PROVIDE MEDS/LABS
AFTER PLAN OF TREATMENT IS SET BY SPECIALIST

MISSOURI OZARKS COMMUNITY HEALTH – GAINESVILLE
201 SOUTH ELM STREET
GAINESVILLE, MO 65655
PHONE: 417-679-2775

[HTTP://MOCH.US/](http://moch.us/)

HEP B TESTING: YES

HEP B TREATMENT: NO, BUT CAN PROVIDE MEDS/LABS
AFTER PLAN OF TREATMENT IS SET BY SPECIALIST

HEP C TESTING: YES

HEP C TREATMENT: NO, BUT CAN PROVIDE MEDS/LABS
AFTER PLAN OF TREATMENT IS SET BY SPECIALIST

MISSOURI OZARKS COMMUNITY HEALTH – MANSFIELD
804 N. HIGHWAY 5
MANSFIELD, MO 65704
PHONE: 417-924-8809

[HTTP://MOCH.US/](http://moch.us/)

HEP B TESTING: YES

HEP B TREATMENT: NO, BUT CAN PROVIDE MEDS/LABS
AFTER PLAN OF TREATMENT IS SET BY SPECIALIST

HEP C TESTING: YES

HEP C TREATMENT: NO, BUT CAN PROVIDE MEDS/LABS
AFTER PLAN OF TREATMENT IS SET BY SPECIALIST

OZARKS COMMUNITY HEALTH CENTER
102 JACKSON STREET
HERMITAGE, MO 65668
PHONE: 417-745-2121

[HTTP://OZARKSCHC.COM/](http://ozarkschc.com/)

HEP B TESTING: YES

HEP B TREATMENT: REFERS TO SPECIALIST

HEP C TESTING: YES

HEP C TREATMENT: REFERS TO SPECIALIST

SHANNON COUNTY FAMILY CLINIC
1003 S. MAIN STREET
EMINENCE, MO 65466
PHONE: 573-226-5505 OR 877-654-1351

[HTTP://WWW.MOHIGH.ORG/](http://www.mohigh.org/)

HEP B TESTING: YES

HEP B TREATMENT: REFERS TO SPECIALIST

HEP C TESTING: YES

HEP C TREATMENT: REFERS TO SPECIALIST

SOUTH CENTRAL MISSOURI COMMUNITY HEALTH CENTER
(YOUR COMMUNITY HEALTH CENTER)
1050 W. 10TH STREET, SUITE 480
ROLLA, MO 65401
PHONE: 573-426-4455

[HTTP://WWW.YOUR-CHC.ORG/](http://www.your-chc.org/)

HEP B TESTING: YES

HEP B TREATMENT: REFERS TO SPECIALIST

HEP C TESTING: YES

HEP C TREATMENT: REFERS TO SPECIALIST

FEDERALLY QUALIFIED HEALTH CENTERS

Southwest Region (Page 3)

SOUTHERN MISSOURI COMMUNITY HEALTH CENTER THAYER
CLINIC (MEDICAL & DENTAL)
RR 3

THAYER, MO 65791

PHONE: 417-264-3204

[HTTP://WWW.SMCHC.ORG/](http://www.smchc.org/)

HEP B TESTING: YES

HEP B TREATMENT: REFERS TO SPECIALIST

HEP C TESTING: YES

HEP C TREATMENT: REFERS TO SPECIALIST

SOUTHERN MISSOURI COMMUNITY HEALTH CENTER WEST
PLAINS CLINIC (MEDICAL & DENTAL)

1137 INDEPENDENCE DRIVE

WEST PLAINS, MO 65775

PHONE: 417-255-8464 OR 417-255-8213

[HTTP://WWW.SMCHC.ORG/](http://www.smchc.org/)

HEP B TESTING: YES

HEP B TREATMENT: REFERS TO SPECIALIST

HEP C TESTING: YES

HEP C TREATMENT: REFERS TO SPECIALIST

TRI-LAKES COMMUNITY HEALTH CENTER

11863 STATE HIGHWAY 13

KIMBERLING CITY, MO 65686

PHONE: 417-739-1995

[HTTPS://WWW.FORDLANDCLINIC.ORG//](https://www.fordlandclinic.org//)

HEP B TESTING: YES

HEP B TREATMENT: NO

HEP C TESTING: YES

HEP C TREATMENT: NO

HEPATOLOGISTS AND GASTROENTEROLOGISTS

Kansas City Region (Page 1)

GREGORY B. BARBER, MD
5330 N OAK TRFY, STE 102
KANSAS CITY, MO 64118
816-478-4887
SPECIALITY: GASTROENTEROLOGY
TREAT HEPATITIS B: YES
TREAT HEPATITIS C: YES
***ACCEPTING NEW PATIENTS: YES**

ARTHUR L. BROCK III, MD
3800 S WHITNEY AVE, STE 200
INDEPENDENCE, MO 64055
816-478-4887
SPECIALITY: GASTROENTEROLOGY
TREAT HEPATITIS B: YES
TREAT HEPATITIS C: YES
***ACCEPTING NEW PATIENTS: YES**

YAN CHEN, MD
3800 S WHITNEY AVE, STE 200
INDEPENDENCE, MO 64055
816-478-4887
SPECIALITY: GASTROENTEROLOGY
TREAT HEPATITIS B: YES
TREAT HEPATITIS C: YES
***ACCEPTING NEW PATIENTS: YES**

DONALD J. CLEMENT, MD
930 CARONDELET DR, STE 104
KANSAS CITY, MO 64114
816-478-4887
SPECIALITY: GASTROENTEROLOGY
TREAT HEPATITIS B: YES
TREAT HEPATITIS C: YES
***ACCEPTING NEW PATIENTS: YES**

TERRENCE W. COLEMAN, MD
2521 GLENN HENDREN DR, STE 408
LIBERTY, MO 64068
816-781-4444
SPECIALITY: GASTROENTEROLOGY
TREAT HEPATITIS B: YES
TREAT HEPATITIS C: YES
***ACCEPTING NEW PATIENTS: YES**

MICHAEL CONNOR, MD
6420 PROSPECT AVE, STE T407
KANSAS CITY, MO 64132-4185
(816) 333-5424
SPECIALITY: GASTROENTEROLOGY
TREAT HEPATITIS B: YES
TREAT HEPATITIS C: YES
***ACCEPTING NEW PATIENTS: YES**

IVAN ELIAS, MD
6420 PROSPECT AVE, STE T407
KANSAS CITY, MO 64132-4185
(816) 333-5424
SPECIALITY: GASTROENTEROLOGY
TREAT HEPATITIS B: YES
TREAT HEPATITIS C: YES
***ACCEPTING NEW PATIENTS: YES**

NAMIN M. FARID, MD
206 NW MOCK AVE, STE 100
BLUE SPRINGS, MO 64014
816-229-1191
SPECIALITY: GASTROENTEROLOGY
TREAT HEPATITIS B: YES
TREAT HEPATITIS C: YES
***ACCEPTING NEW PATIENTS: YES**

MICHAEL FEDONTIN, MD
6420 PROSPECT AVE, STE T407
KANSAS CITY, MO 64132-4185
(816) 333-5424
SPECIALITY: GASTROENTEROLOGY
TREAT HEPATITIS B: YES
TREAT HEPATITIS C: YES
***ACCEPTING NEW PATIENTS: YES**

JESSICA FENNEWALD, FNP
18640 E. 38TH TERRACE SOURH
INDEPENDENCE, MO 64055
816-229-1191
SPECIALITY: NURSE PRACTITIONER - GASTROENTEROLOGY
TREAT HEPATITIS B: YES
TREAT HEPATITIS C: YES
***ACCEPTING NEW PATIENTS: YES**

BRADLEY L. FREILICH, MD
6675 HOLMES RD, STE 430
KANSAS CITY, MO 64131-1167
(816) 361-0055
SPECIALITY: GASTROENTEROLOGY
TREAT HEPATITIS B: YES
TREAT HEPATITIS C: YES
***ACCEPTING NEW PATIENTS: YES**

BRENT WM GINSBERG, MD
6420 PROSPECT AVE, STE T407
KANSAS CITY, MO 64132-4185
(816) 333-5424
SPECIALITY: GASTROENTEROLOGY
TREAT HEPATITIS B: YES
TREAT HEPATITIS C: YES
***ACCEPTING NEW PATIENTS: YES**

HEPATOLOGISTS AND GASTROENTEROLOGISTS

Kansas City Region (Page 2)

RISHI S. GREWAL, MD
3800 S WHITNEY AVE, STE 200
INDEPENDENCE, MO 64055
816-478-4887
SPECIALITY: GASTROENTEROLOGY
TREAT HEPATITIS B: YES
TREAT HEPATITIS C: YES
***ACCEPTING NEW PATIENTS: YES**

JONATHON P. HORWITZ, DO
2521 GLENN HENDREN DR, STE 408
LIBERTY, MO 64068
816-478-4887
SPECIALITY: GASTROENTEROLOGY
TREAT HEPATITIS B: YES
TREAT HEPATITIS C: YES
***ACCEPTING NEW PATIENTS: YES**

THOMAS F. JONES, MD
2521 GLENN HENDREN DR, STE 408
LIBERTY, MO 64068
816-478-4887
SPECIALITY: GASTROENTEROLOGY
TREAT HEPATITIS B: YES
TREAT HEPATITIS C: YES
***ACCEPTING NEW PATIENTS: YES**

STEVEN D. KASTER, MD
2521 GLENN HENDREN DR, STE 408
LIBERTY, MO 64068
816-478-4887
SPECIALITY: GASTROENTEROLOGY
TREAT HEPATITIS B: YES
TREAT HEPATITIS C: YES
***ACCEPTING NEW PATIENTS: YES**

SYED M. KHALID, MD
3800 S WHITNEY AVE, STE 200
INDEPENDENCE, MO 64055
816-478-4887
SPECIALITY: GASTROENTEROLOGY
TREAT HEPATITIS B: YES
TREAT HEPATITIS C: YES
***ACCEPTING NEW PATIENTS: YES**

GREGORY MERRITT, MD
6420 PROSPECT AVE, STE T407
KANSAS CITY, MO 64132-4185
(816) 333-5424
SPECIALITY: GASTROENTEROLOGY
TREAT HEPATITIS B: YES
TREAT HEPATITIS C: YES
***ACCEPTING NEW PATIENTS: YES**

SCOTT SPOPECK, MD
2790 CLAY EDWARDS DR
KANSAS CITY, MO 64116-3274
816-221-9898
SPECIALITY: GASTROENTEROLOGY
TREAT HEPATITIS B: YES
TREAT HEPATITIS C: YES
***ACCEPTING NEW PATIENTS: YES**

THOMAS J. SHIREMAN, MD
5330 N OAK TRFY, STE 100
KANSAS CITY, MO 64118
816-478-4887
SPECIALITY: GASTROENTEROLOGY
TREAT HEPATITIS B: YES
TREAT HEPATITIS C: YES
***ACCEPTING NEW PATIENTS: YES**

CHUN X. HSU, MD
3800 S WHITNEY AVE, STE 200
INDEPENDENCE, MO 64055
816-478-4887
SPECIALITY: GASTROENTEROLOGY
TREAT HEPATITIS B: YES
TREAT HEPATITIS C: YES
***ACCEPTING NEW PATIENTS: YES**

GREGORY M. VARDAKIS, DO
206 NW MOCK AVE, STE 100
BLUE SPRINGS, MO 64014
816-229-1191
SPECIALITY: GASTRO/FAMILY PRACTICE
TREAT HEPATITIS B: YES
TREAT HEPATITIS C: YES
***ACCEPTING NEW PATIENTS: YES**

JOHN A. WOLTJEN, MD
100 NW MOCK AVE, STE 101
BLUE SPRINGS, MO 64014
816-220-9080
SPECIALITY: GASTROENTEROLOGY
TREAT HEPATITIS B: YES
TREAT HEPATITIS C: YES
***ACCEPTING NEW PATIENTS: YES**

DALE H. WYTOCK, MD
2521 GLENN HENDREN DR, STE 408
LIBERTY, MO 64068
816-478-4887
SPECIALITY: GASTROENTEROLOGY
TREAT HEPATITIS B: YES
TREAT HEPATITIS C: YES
***ACCEPTING NEW PATIENTS: YES**

HEPATOLOGISTS AND GASTROENTEROLOGISTS

North Central Region (Page 1)

ASHRAF A. ALMASHHRAWI, MD
101 S FAIRVIEW RD
COLUMBIA, MO 65203
573-882-0482
SPECIALITY: GASTROENTEROLOGY
TREAT HEPATITIS B: YES
TREAT HEPATITIS C: YES
***ACCEPTING NEW PATIENTS: YES**

AMEENA ANEES, MD
1513 UNION AVE, STE 1600
MOBERLY, MO 65270
660-372-8008
SPECIALITY: GASTROENTEROLOGY
TREAT HEPATITIS B: NO
TREAT HEPATITIS C: YES
***ACCEPTING NEW PATIENTS: YES**

ALZUBI AYMAN, MD
ONE HOSPITAL DRIVE
COLUMBIA, MO 65201
573-882-7377
SPECIALITY: HEPATOLOGY
TREAT HEPATITIS B: UNKNOWN
TREAT HEPATITIS C: UNKNOWN
***ACCEPTING NEW PATIENTS: UNKNOWN**

KEVIN G. BYRNE, DO
1029 NICHOLS RD STE 201
OSAGE BEACH, MO 65065--304
(573) 302-7138
SPECIALITY: GASTROENTEROLOGY
TREAT HEPATITIS B: YES
TREAT HEPATITIS C: YES
***ACCEPTING NEW PATIENTS: YES-ONLY 10 PER MONTH**

PETER J. CLEAVINGER, MD
210 PORTLAND ST
COLUMBIA, MO 65201
573-777-8818
SPECIALITY: GASTROENTEROLOGY
TREAT HEPATITIS B: YES
TREAT HEPATITIS C: YES
***ACCEPTING NEW PATIENTS: YES**

GHASSAN HAMMOUD, MD
101 S FAIRVIEW RD
COLUMBIA, MO 65203
573-882-7600
SPECIALITY: GASTROENTEROLOGY
TREAT HEPATITIS B: YES
TREAT HEPATITIS C: YES
***ACCEPTING NEW PATIENTS: YES**

BHAGIRATH H KATBAMNA, MD
PO BOX 311
HANNIBAL, MO 63401-0311
(573) 221-5250
SPECIALITY: GASTROENTEROLOGY
TREAT HEPATITIS B: YES
TREAT HEPATITIS C: YES
***ACCEPTING NEW PATIENTS: YES - WITH REFERRAL**

GEORGE LEE KISTLER, MD
1505 SOUTHWEST BLVD
JEFFERSON CITY, MO 65109-2431
(573) 634-2620
SPECIALITY: GASTROENTEROLOGY
TREAT HEPATITIS B: NO
TREAT HEPATITIS C: YES
***ACCEPTING NEW PATIENTS: YES**

NICOLAS LLORENS
210 PORTLAND ST, STE 100
COLUMBIA, MO 65201
573-777-8818
SPECIALITY: GASTROENTEROLOGY
TREAT HEPATITIS B: YES
TREAT HEPATITIS C: YES
***ACCEPTING NEW PATIENTS: YES**

LORENZO D. MCNELLEY, DO
1125 MADISON ST
JEFFERSON CITY, MO 65101
573-635-7651
SPECIALITY: INFECTIOUS DISEASE
TREAT HEPATITIS B: YES
TREAT HEPATITIS C: YES
***ACCEPTING NEW PATIENTS: YES - WITH REFERRAL**

MATTHEW G. STRUTTMANN, MD
210 PORTLAND ST, STE 100
COLUMBIA, MO 65201
573-777-8818
SPECIALITY: GASTROENTEROLOGY
TREAT HEPATITIS B: YES
TREAT HEPATITIS C: YES
***ACCEPTING NEW PATIENTS: YES**

KY-DIEU TRAN, MD
101 S FAIRVIEW RD
COLUMBIA, MO 65212
573-882-7600
SPECIALITY: GASTROENTEROLOGY
TREAT HEPATITIS B: YES
TREAT HEPATITIS C: YES
***ACCEPTING NEW PATIENTS: YES**

HEPATOLOGISTS AND GASTROENTEROLOGISTS

North Central Region (Page 2)

STEPHEN WOODROW WELSH, MD

401 N KEENE ST

COLUMBIA, MO 65201-6625

(573) 874-3300

SPECIALITY: GASTROENTEROLOGY

TREAT HEPATITIS B: YES

TREAT HEPATITIS C: YES

***ACCEPTING NEW PATIENTS: YES**

CHARMAINE ERICA EDWARDS, MD

1125 MADISON ST

JEFFERSON CITY, MO 65101

573-635-7651

SPECIALITY: GASTROENTEROLOGY

TREAT HEPATITIS B: NO

TREAT HEPATITIS C: YES

***ACCEPTING NEW PATIENTS: YES- WITH REFERRAL**

HEPATOLOGISTS AND GASTROENTEROLOGISTS

Southeast Region (Page 1)

JUERGEN HELMUT B BERTRAM, MD
2210 BARRON RD, STE 117
POPLAR BLUFF, MO 63901-1908
573-686-4133
SPECIALITY: ONCOLOGY
TREAT HEPATITIS B: NO
TREAT HEPATITIS C: NO
***ACCEPTING NEW PATIENTS:**

STEPHEN T. WELTON, MD
1012 N MAIN ST
SIKESTON, MO 63801
573-471-0330
SPECIALITY: INTERNAL MEDICINE
TREAT HEPATITIS B: NO
TREAT HEPATITIS C: YES
***ACCEPTING NEW PATIENTS: YES**

SUNIL G. CHAND, MD
1031 EAST KARSCH BLVD
FARMINGTON, MO 63640
573-756-7880
SPECIALITY: INTERNAL MEDICINE
TREAT HEPATITIS B: NO
TREAT HEPATITIS C: YES
***ACCEPTING NEW PATIENTS: YES**

NILIMA P. CHAND, MD
1031 EAST KARSCH BLVD
FARMINGTON, MO 63640
573-756-7880
SPECIALITY: INTERNAL MEDICINE
TREAT HEPATITIS B: NO
TREAT HEPATITIS C: YES
***ACCEPTING NEW PATIENTS: YES**

STEVEN L. DOUGLAS, MD
320 N LINCOLN ST
EAST PRAIRIE, MO 63845
573-649-3026
SPECIALITY: FAMILY PRACTICE
TREAT HEPATITIS B: YES
TREAT HEPATITIS C: YES
***ACCEPTING NEW PATIENTS: YES**

BRENA KELLER, DO
1701 LACEY ST
CAPE GIRARDEAU, MO 63701
573-331-5932
SPECIALITY: INFECTIOUS DISEASES
TREAT HEPATITIS B: YES
TREAT HEPATITIS C: YES
***ACCEPTING NEW PATIENTS: YES**

CHARLES E. LAVALLE, MD
1701 LACEY ST
CAPE GIRARDEAU, MO 63701
573-331-5932
SPECIALITY: INFECTIOUS DISEASES
TREAT HEPATITIS B: YES
TREAT HEPATITIS C: YES
***ACCEPTING NEW PATIENTS: YES**

HEPATOLOGISTS AND GASTROENTEROLOGISTS

St. Louis Region (Page 1)

YAZAN ABDALLA, MD
10012 KENNERLY ROAD, STE 404
SAINT LOUIS, MO 63128
314-543-5911
SPECIALITY: GASTROENTEROLOGY
TREAT HEPATITIS B: YES
TREAT HEPATITIS C: YES
***ACCEPTING NEW PATIENTS: YES**

BARRY ABRAMBSON, MD
3009 N BALLAS RD, STE 210B
SAINT LOUIS, MO 63131
314-432-5044
SPECIALITY: GASTROENTEROLOGY
TREAT HEPATITIS B: YES
TREAT HEPATITIS C: YES
***ACCEPTING NEW PATIENTS: YES**

MARC JORDAN BERNSTEIN, MD
STE 598A, 621 S NEW BALLAS RD
SAINT LOUIS, MO 63141
314-251-2880
SPECIALITY: GASTROENTEROLOGY
TREAT HEPATITIS B: YES
TREAT HEPATITIS C: YES
***ACCEPTING NEW PATIENTS: YES**

ELDAD BIALECKI, MD
100 VILLAGE SQUARE SHOP CENTER
HAZELWOOD, MO 63042
(314) 355-4010
SPECIALITY: GASTROENTEROLOGY
TREAT HEPATITIS B: YES
TREAT HEPATITIS C: YES
***ACCEPTING NEW PATIENTS: YES**

CARL FREDERICK BLATT JR, MD
901 PATIENTS FIRST DR., GI DEPT
WASHINGTON, MO 63090-4700
(636) 239-7344
SPECIALITY: INTERNAL MEDICINE
TREAT HEPATITIS B: YES
TREAT HEPATITIS C: NO
***ACCEPTING NEW PATIENTS: YES**

MARC BERNSTEIN, MD
621 S NEW BALLAS ROAD, SUITE 598A
ST. LOUIS, MO 63141
314-251-3380
SPECIALITY: GASTRO/HEPATOLOGY
TREAT HEPATITIS B: YES
TREAT HEPATITIS C: YES
***ACCEPTING NEW PATIENTS: YES**

ALEX BEFELER, MD
3660 VISTA AVE, STE 302
SAINT LOUIS, MO 63110
314-577-6000
SPECIALITY: GASTRO/HEPATOLOGY
TREAT HEPATITIS B: YES
TREAT HEPATITIS C: YES
***ACCEPTING NEW PATIENTS: YES**

ADRIAN M. DI BISCEGLIE, MD
3660 VISTA AVE, STE 302
SAINT LOUIS, MO 63110
314-577-6000
SPECIALITY: GASTRO/HEPATOLOGY
TREAT HEPATITIS B: YES
TREAT HEPATITIS C: YES
***ACCEPTING NEW PATIENTS: YES**

STEVEN E. FERN, DO
11525 OLDE CABIN RD #101
ST. LOUIS, MO 63141
314-997-0554
SPECIALITY: GENERAL PRACTICE
TREAT HEPATITIS B: YES
TREAT HEPATITIS C: YES
***ACCEPTING NEW PATIENTS: YES**

RICHARD ABELS GEISMAN, MD
201 BJC ST PETERS STE 100
ST PETERS, MO 63376
(636) 947-3392
SPECIALITY: GASTROENTEROLOGY
TREAT HEPATITIS B: TESTING ONLY
TREAT HEPATITIS C: TESTING ONLY
***ACCEPTING NEW PATIENTS:**

ROBYN HAITHCOCK SR, DO
1227 DE PAUL DR, STE 404
BRIDGETON, MO 63044
314-770-1000
SPECIALITY: GASTROENTEROLOGY
TREAT HEPATITIS B: YES
TREAT HEPATITIS C: YES
***ACCEPTING NEW PATIENTS: YES**

ASHFAQ HUSSAIN HAKIM, MD
1224 GRAHAM RD, STE 3002
FLORISSANT, MO 63031-8028
(314) 653-1414
SPECIALITY: INTERNAL MEDICINE
TREAT HEPATITIS B: YES
TREAT HEPATITIS C: YES
***ACCEPTING NEW PATIENTS: YES- WITH REFERRAL**

HEPATOLOGISTS AND GASTROENTEROLOGISTS

St. Louis Region (Page 2)

FRANS HANDOJO, MD
4130 S GRAND BLVD
SAINT LOUIS, MO 63118-3420
(314) 752-7370
SPECIALITY: GASTROENTEROLOGY
TREAT HEPATITIS B: YES
TREAT HEPATITIS C: YES
***ACCEPTING NEW PATIENTS: YES**

TARIQ HASSAN, MD
100 VILLAGE SQUARE SHOP CENTER
HAZELWOOD, MO 63042
(314) 355-4010
SPECIALITY: GASTROENTEROLOGY
TREAT HEPATITIS B: YES
TREAT HEPATITIS C: YES
***ACCEPTING NEW PATIENTS: YES**

OLAYIWOLA C. OLAGBEGI, MD
11155 DUNN RD, STE 109
SAINT LOUIS, MO 63136-6132
314-953-8799
SPECIALITY: GASTROENTEROLOGY
TREAT HEPATITIS B: YES
TREAT HEPATITIS C: YES
***ACCEPTING NEW PATIENTS: YES**

DAVID ALAN PARKS, MD
3960 LINDELL BLVD.
SAINT LOUIS, MO 63108-2206
(314) 652-0100
SPECIALITY: INTERNAL MEDICINE
TREAT HEPATITIS B: YES
TREAT HEPATITIS C: YES
***ACCEPTING NEW PATIENTS: YES-WITH SCREENING**

TWAN PHANIJPHAND, DO
10012 KENNERLY ROAD, STE 404
SAINT LOUIS, MO 63128
314-543-5911
SPECIALITY: GASTROENTEROLOGY
TREAT HEPATITIS B: TESTING ONLY
TREAT HEPATITIS C: TESTING ONLY
***ACCEPTING NEW PATIENTS: YES**

REHAN RAFIQ, MD
11155 DUNN RD, STE 109
SAINT LOUIS, MO 63136-6132
314-953-8799
SPECIALITY: GASTROENTEROLOGY
TREAT HEPATITIS B: YES
TREAT HEPATITIS C: YES
***ACCEPTING NEW PATIENTS: YES**

MELVIN SALTZMAN
1227 DE PAUL DR, STE 404
BRIDGETON, MO 63044
314-770-1000
SPECIALITY: GASTROENTEROLOGY
TREAT HEPATITIS B: YES
TREAT HEPATITIS C: YES
***ACCEPTING NEW PATIENTS: YES**

JONATHAN SECCOMBE, MD
3009 N BALLAS RD, STE 210B
SAINT LOUIS, MO 63131
314-432-5044
SPECIALITY: GASTROENTEROLOGY
TREAT HEPATITIS B: YES
TREAT HEPATITIS C: YES
***ACCEPTING NEW PATIENTS: YES**

AMAN SINGH, MD
11525 OLDE CABIN RD #101
ST LOUIS, MO 63141
314-997-0054
SPECIALITY: GASTROENTEROLOGY
TREAT HEPATITIS B: YES
TREAT HEPATITIS C: YES
***ACCEPTING NEW PATIENTS: YES**

ROBERT STOFFA, MD
100 VILLAGE SQUARE SHOP CENTER
HAZELWOOD, MO 63042
(314) 355-4010
SPECIALITY: GASTROENTEROLOGY
TREAT HEPATITIS B: YES
TREAT HEPATITIS C: YES
***ACCEPTING NEW PATIENTS: YES**

BRENT A. TETRI, MD
3660 VISTA AVE, STE 302
ST. LOUIS, MO 63110-253
314-577-6000
SPECIALITY: GASTROENTEROLOGY
TREAT HEPATITIS B: YES
TREAT HEPATITIS C: YES
***ACCEPTING NEW PATIENTS: YES**

HEPATOLOGISTS AND GASTROENTEROLOGISTS

Southwest Region (Page 1)

YOUSSEF ASSIOUN, MD
1390 US HIGHWAY 61, SUITE 2200
FESTUS, MO 63028-4121
636 937-8675
SPECIALITY: GASTROENTEROLOGY
TREAT HEPATITIS B: YES
TREAT HEPATITIS C: YES
***ACCEPTING NEW PATIENTS: YES**

JACKIE S. BEENE, MD
112 N WEBB ST
WEBB CITY, MO 64870
417-673-0366
SPECIALITY: FAMILY PRACTICE
TREAT HEPATITIS B: YES
TREAT HEPATITIS C: YES
***ACCEPTING NEW PATIENTS: YES- WITH REFERRAL**

MATTHEW BROWN
1422 S SAM HOUSTON BLVD.
HOUSTON, MO 65483
417-967-4445
SPECIALITY: FAMILY PRACTICE
TREAT HEPATITIS B: YES
TREAT HEPATITIS C: YES
***ACCEPTING NEW PATIENTS: YES - 5 PER MONTH**

CHRISTOPHER D. COCHRAN, MD
1115 ALASKA ST, STE 215
WEST PLAINS, MO 65775-2014
417 257-5989
SPECIALITY: INTERNAL MEDICINE
TREAT HEPATITIS B: YES
TREAT HEPATITIS C: YES
***ACCEPTING NEW PATIENTS: YES- WITH REFERRAL**

DAVID J. COZZIDO, DO
2115 S FREMENT, STE 3300
SPRINGFIELD, MO 65804
417-820-5200
SPECIALITY: GASTROENTEROLOGY
TREAT HEPATITIS B: YES
TREAT HEPATITIS C: YES
***ACCEPTING NEW PATIENTS: YES**

DAVID L. GEIER, MD
2115 S FREMONT, STE 3300
SPRINGFIELD, MO 65804
417-820-5200
SPECIALITY: GASTROENTEROLOGY
TREAT HEPATITIS B: YES
TREAT HEPATITIS C: YES
***ACCEPTING NEW PATIENTS: YES**

JASON HAAS
1001 E PRIMROSE ST
SPRINGFIELD, MO 65807
417-875-3760
SPECIALITY: GASTROENTEROLOGY
TREAT HEPATITIS B: YES
TREAT HEPATITIS C: YES
***ACCEPTING NEW PATIENTS: YES**

SANJAY K. HAVALDAR, MD
1001 E PRIMROSE ST
SPRINGFIELD, MO 65807
417-875-3760
SPECIALITY: GASTROENTEROLOGY
TREAT HEPATITIS B: YES
TREAT HEPATITIS C: YES
***ACCEPTING NEW PATIENTS: YES**

ALEXANDER R. HOVER, MD
2115 S FREMONT, STE 3300
SPRINGFIELD, MO 65804
417-820-5200
SPECIALITY: GASTROENTEROLOGY
TREAT HEPATITIS B: YES
TREAT HEPATITIS C: YES
***ACCEPTING NEW PATIENTS: YES**

MUBASHIR HASSAN KHAN, MD
2115 S FREMONT, STE 3300
SPRINGFIELD, MO 65804
417-820-5200
SPECIALITY: GASTROENTEROLOGY
TREAT HEPATITIS B: YES
TREAT HEPATITIS C: YES
***ACCEPTING NEW PATIENTS: YES**

ROY D. LIBEL, MD
2115 S FREMONT, STE 3300
SPRINGFIELD, MO 65804
417-820-5200
SPECIALITY: GASTROENTEROLOGY
TREAT HEPATITIS B: YES
TREAT HEPATITIS C: YES
***ACCEPTING NEW PATIENTS: YES**

GREGORY L. LYFORD, MD
1001 E PRIMROSE ST
SPRINGFIELD, MO 65807
417-875-3760
SPECIALITY: PRIMARY CARE
TREAT HEPATITIS B: YES
TREAT HEPATITIS C: YES- WITH REFERRAL
***ACCEPTING NEW PATIENTS: YES**

HEPATOLOGISTS AND GASTROENTEROLOGISTS

Southwest Region (Page 2)

DONALD H. MANGUM, MD
2115 S FREEMONT, STE 3300
SPRINGFIELD, MO 65804
417-820-5200
SPECIALITY: GASTROENTEROLOGY
TREAT HEPATITIS B: YES
TREAT HEPATITIS C: YES
***ACCEPTING NEW PATIENTS: YES**

EDUARDO VERZOLA, MD
1390 US HIGHWAY 61, SUITE 2200
FESTUS, MO 63028-4121
SPECIALITY: GASTROENTEROLOGY
636 937-8675
TREAT HEPATITIS B: YES
TREAT HEPATITIS C: YES
***ACCEPTING NEW PATIENTS: YES**

DACE L. MILLER, MD
1001 E PRIMROSE ST
SPRINGFIELD, MO 65807
417-875-3760
SPECIALITY: GASTROENTEROLOGY
TREAT HEPATITIS B: YES
TREAT HEPATITIS C: YES
***ACCEPTING NEW PATIENTS: YES**

DONALD CHAS NELSON, MD
2115 S FREMONT AVE, STE 3300
SPRINGFIELD, MO 65804-2246
(417) 820-5200
SPECIALITY: GASTROENTEROLOGY
TREAT HEPATITIS B: YES
TREAT HEPATITIS C: YES
***ACCEPTING NEW PATIENTS: YES -WITH REFERRAL**

PETER J. RAMSEY, MD
1001 E PRIMROSE ST
SPRINGFIELD, MO 65807
417-875-3760
SPECIALITY: GASTROENTEROLOGY
TREAT HEPATITIS B: YES
TREAT HEPATITIS C: YES
***ACCEPTING NEW PATIENTS: YES**

DAVID ALLEN SEIDL, MD
2216 E 32ND ST, STE 201
JOPLIN, MO 64804-3933
(417) 781-7110
SPECIALITY: GASTROENTEROLOGY
TREAT HEPATITIS B: YES
TREAT HEPATITIS C: YES
***ACCEPTING NEW PATIENTS: YES**

JESSE G. TAYLOR, MD
2115 S FREMONT, STE 3300
SPRINGFIELD, MO 65804
417-820-5200
SPECIALITY: GASTROENTEROLOGY
TREAT HEPATITIS B: YES
TREAT HEPATITIS C: YES
***ACCEPTING NEW PATIENTS: YES**

TREATMENT INFORMATION AND PATIENT ASSISTANCE PROGRAMS

Approved Treatments for Hepatitis C

Brand Name	Generic Names	Manufacturer	Patient Assistance Programs (PAP)
Viekira Pak	ombitasvir, paritaprevir and ritonavir tablets; dasabuvir tablets	AbbVie Inc.	844-2proCeed (844-277-6233) https://www.viekira.com/proceed-program
Harvoni	ledipasvir and sofosbuvir	Gilead Sciences	855-769-7284 http://www.mysupportpath.com/
Sovaldi	sofosbuvir	Gilead Sciences	855-769-7284 http://www.mysupportpath.com/
Olysio8	simeprevir	Janssen	800-652-6227 855-5-OLYSIO http://www.olsio.com/support/financial-assistance
Pegasys	pegylated interferon	Genentech (Roche)	888-941-3331 http://www.genentech-access.com/pegasys/hcp
CoPegus	ribavirin	Genentech (Roche)	888-941-3331 http://www.genentech-access.com/pegasys/hcp
Pegintron	pegylated interferon alpha-2b	Merck & Co.	800-727-5400 http://merckhelps.com/
Intron A	interferon alpha-2b	Merck & Co.	800-727-5400 http://merckhelps.com/
Rebetol	ribavirin	Merck & Co.	800-727-5400 http://merckhelps.com/
Roferon	interferon alpha-2a	Genentech (Roche)	888-941-3331 http://www.genentech-access.com/pegasys/hcp
Zepatier	elbasvir and grazoprevir	Merck & Co.	800-727-5400 http://merckhelps.com/
General Patient Assistance Programs (PAP)			
Patient Access Network (PAN)		1-866-316-7263 646-441-4145	www.panfoundation.org
Partnership for Prescription Assistance		1-888-477-2669	www.pparx.org
Pegasys Access Solutions		1-888-941-3331	www.genentech-access.com
Needy Meds		800-503-6897	www.needymeds.com

SUPPORT GROUPS

For many people, living with Hepatitis C is not easy. On a daily basis, they may be faced with making many important personal decisions that can affect almost every area of their lives. The best way to live well with Hepatitis C is to be educated so that they can receive optimal medical care. It is also very important that they seek support from family, loved ones, friends and peers. One important component of the process is to discuss and share experiences about Hepatitis C with others. A peer support group is good place to learn about Hepatitis C and find support.

Who would benefit from a Hepatitis C support Group?

- People who have just been told they have Hepatitis C
- People who are being monitored, but not treated, for Hepatitis C (some people have symptoms and some do not)
- People thinking about treatment or are currently in treatment for Hepatitis C
- Family members and close friends of someone who has Hepatitis C

What are the benefits of a support group?

- To help individuals affected by Hepatitis C work through different issues
- Give each other help and advice
- Give each other emotional support
- Help each other make better choices in their lives
- Help each other feel safe and secure
- Help each other feel better and understand themselves
- Learn how to teach others about the basics of Hepatitis C

Where can you find Hepatitis C support group information?

Support Group Materials and Lessons are available at this link - <http://www.hcvadvocate.org/community/Groups.asp>

A Support Group Handbook is available at this link -

http://www.hcvadvocate.org/hepatitis/factsheets_pdf/Support_Group_Handbook.pdf

If you are interested in starting a support group in your area, these materials will help you get knowledge about getting started.

INTERNET RESOURCES

Support and other information is available at:



Testing, Education
and Support
Columbia, MO
573-442-6599

www.hepcalliance.org



Are you Hepatitis C positive?
Support and Referrals

www.help4hep.org

877-HELP-4-HEP

Information on Clinical Trials is available at <http://www.clinicaltrials.gov>

Educational Materials and Information for Specific Settings is available at
www.health.mo.gov/viralhepatitis

Information includes Topics of:

- Correctional Facilities/Incarceration
- Tattoos and Piercings
- Veterans
- Affordable Care Act
- Liver Health
- Resources for Schools
- Resources for Healthcare Providers
- Resources for Substance Abuse Professionals

Many brochures are available for free!

GLOSSARY OF IMPORTANT TERMS

Abdomen – The portion of the body located between the chest and the pelvis. Contains the stomach, lower part of the esophagus, small and large intestines, liver, gallbladder, spleen, pancreas, and bladder.

Acetaminophen – A type of medication used to relieve pain and fever. An example is Tylenol.

Acute illness – Acute refers to the short-term, initial stage of infection.

Adipose tissues – Fatty tissues.

Albumin – A protein produced by the liver that circulates in the blood.

Alpha-fetoprotein (AFP) – A protein produced by cancerous liver cells.

Anemia – Condition in which there is a reduction in the number of circulating red blood cells, usually resulting in a decrease in the amount of oxygen in the blood.

Antibody – A molecule produced by the immune system in response to a foreign body such as a virus or bacteria. Antibodies circulate in the blood to protect against infection.

Antigen – A foreign substance that the body's immune system identifies as potentially harmful.

Ascites – Fluid accumulation in the abdomen.

Asymptomatic – Without symptoms or signs of illness.

Autoimmune – A condition in which the body produces antibodies against normal parts of the body to such an extent as to cause tissue injury.

Benign – Not recurrent or progressive.

Bile – A fluid that is stored in the gallbladder for release when needed. Bile is necessary for the digestion of fats – it dissolves fat into small globules (similar to the way that detergent lifts oil off greasy plates). Bile also assists in the absorption of fat-soluble vitamins (i.e., vitamins A, D, E, and K) and converts beta-carotene to vitamin A.

Bilirubin – A product of red blood cells.

Biopsy – The removal of a small piece of living tissue for examination under a microscope. Usually performed to establish a diagnosis.

Chemotherapy – Chemical agents that have a specific and toxic effect upon the disease-causing microorganism.

Cholesterol – A soft, waxy substance found in all parts of the body. It is made in the liver and is also found in animal and dairy products.

Chronic illness – An illness that lasts longer than six months.

Cirrhosis – Extensive scarring of the liver.

Decompensated cirrhosis – A condition in which the liver becomes so scarred that blood can no longer flow through it.

Encephalopathy – Disease of the brain. Symptoms include confusion, disorientation, and insomnia, and can progress to coma.

Endemic – A disease that occurs continuously in a particular population.

GLOSSARY OF IMPORTANT TERMS (Continued)

Epidemiology – Investigation of the causes of, and ways to control, diseases.

Esophagus – The tube that carries food from the mouth to the stomach.

Fibrous – Composed of or containing fibers.

Fulminant – Sudden onset, most severe.

Gastroenterologist – A doctor that specializes in the function and disorders of the esophagus, stomach, pancreas, intestines, and liver.

Glucose – A sugar formed during digestion.

Glycogen – A substance found in the liver and muscles that is easily converted to glucose for energy.

Hemodialysis – The process of filtering the accumulated waste products from the blood of a person whose kidneys are not functioning properly, using a kidney machine.

Hepatitis – Inflammation of the liver. It may be caused by a variety of agents, including viral infections, bacterial invasion, and physical or chemical agents. Symptoms include fever, jaundice, and, usually, an enlarged liver.

Hepatitis A – Formerly called infectious hepatitis, hepatitis A is caused by the hepatitis A virus (HAV). It is an acute infection and does not progress to chronic hepatitis or cirrhosis. Most patients recover completely within six to ten weeks. Hepatitis A is spread mainly via feces and contaminated food and water. A vaccine against the hepatitis A virus is available.

Hepatitis B – Formerly called serum hepatitis, it is caused by the hepatitis B virus (HBV). About 10% of cases progress to chronic infection. It is transmitted through sexual contact with an infected individual, injection drug use, and other exposure to infected body fluids. A vaccine against the hepatitis B virus is available.

Hepatitis C – A form of hepatitis that was previously known as non-A, non-B hepatitis and is caused by the hepatitis C virus (HCV). The Centers for Disease Control estimates 26,000 new cases each year, a marked decline in new infections since the virus was identified in 1988. There is no vaccine against hepatitis C virus.

Hepatitis D – Also called delta hepatitis, hepatitis D is caused by the hepatitis D virus (HDV). A person cannot be infected with HDV without current or simultaneous infection with hepatitis B virus. Hepatitis D infection is rare in the U.S. and occurs primarily in recipients of multiple blood transfusions, including patients with hemophilia or undergoing renal dialysis, and among those who share contaminated needles.

Hepatitis E – Also referred to as enterically transmitted non-A, non-B hepatitis, hepatitis E is caused by a waterborne virus (HEV). It is rare in the U.S. and occurs primarily in developing countries. Hepatitis E infection results in an acute infection much like hepatitis A. It does not cause chronic infection. It is spread by fecal contamination in water.

Hepatocellular carcinoma (HCC) – Liver cancer.

Hepatocytes – Liver cells.

Hepatologist – A doctor who specializes in the study and treatment of liver disease.

Immunoglobulin – One of a family of closely related though not identical proteins capable of acting as antibodies.

Immunology – The branch of medicine that focuses on the immune system, immunity, and allergy.

GLOSSARY OF IMPORTANT TERMS (Continued)

Laparoscopic biopsy – A medical procedure performed when a tube (laparoscope) is inserted through an incision in the abdomen and a piece of tissue is removed.

Lipid – Component of fat.

Lipoproteins – A complex of lipids and proteins that carries lipids around the body.

Liver – The largest glandular organ in the body. It has many functions that include, but are not limited to the production of protein and cholesterol, the production of bile, the storage of sugar in the form of glycogen, and the breakdown of carbohydrates, fats, and proteins. The liver also breaks down and excretes many medications.

Malaise – Discomfort, uneasiness often indicates infection.

Nucleoside analogues – A class of HIV medications.

Pancreas – A long, irregularly shaped gland lying behind the stomach that secretes digestive enzymes and produces insulin.

Pathologist – A specialist in diagnosing the abnormal changes in tissues removed at operations and postmortem examinations.

Perinatal – Concerning the period beginning after the 28th week of pregnancy through 28 days following birth.

Perinatal Transmission – Transmission of an infectious disease from mother to infant. It can happen in the uterus, or during or after birth.

Peripheral edema – Fluid build up in the feet and ankles.

Phospholipid – A phosphorus-containing lipid found in cell membranes.

Polymerase inhibitors – A compound that stops an essential enzyme needed for viral replication.

Portal hypertension – High pressure in the liver, intestines, and spleen.

Prophylaxis – A type of treatment to prevent disease or stop it from spreading.

Protease inhibitor – A compound that breaks down proteins, inhibiting the replication of viruses such as HIV.

Prothrombin time (PT) – A measure of blood clotting.

Serologic testing – Blood test.

Transvenous biopsy – A procedure during which a tube is inserted into a vein in the neck, then a needle is put into the catheter to remove tissue samples.

Ultrasound – A test that uses a wand, which is placed on a body part such as the abdomen and moved back and forth to examine the shape, size, and appearance of the liver.

Variceal bleeding – Bleeding from blood vessels in the esophagus. This may occur in patients with cirrhosis.

Page purposely blank for formatting

