

TRAINING REQUIRED

National and International regulations require that any person offering, handling, or transporting Dangerous Goods (Infectious Substances) must be trained. DOT 49 CFR Sec 172.7 and IATA Sec 1.5

(800) 824-0817



Compliant Packaging

Compliant Packaging

Compliant Pa

Compliant

Compliant Pa

Compliant Packaging

Compliant Packaging

Compliant Packaging

Compliant Packaging

Compliant Packaging

Compliant Packaging

Compliant Packaging

Compliant Packaging

Compliant Packaging



INFECON[®] 2050
INSTRUCTION
GUIDE

**Infectious/
Diagnostic
Shipper
INF-2050**



INFECON 2050

Infectious / Diagnostic Shipper Instructions

IMPORTANT NOTE

National and international regulations require that any person offering, handling, or transporting Dangerous Goods (Infectious Substances) must be trained. DOT 49CFR secretary. 172.7 and IATA secretary. 1.5

STEP 1

Disassemble the Infecon 2000 and verify that you have all of the required components:



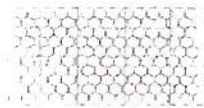
1 infectious substance label



1 diagnostic specimen label



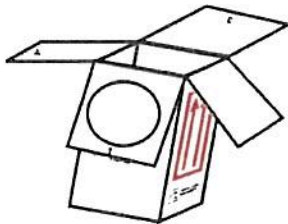
1 pressure vessel



1 bubble pouch



1 piece of absorbent



1 outer box



3 shippers declarations

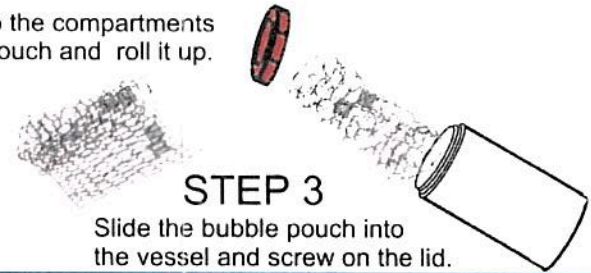
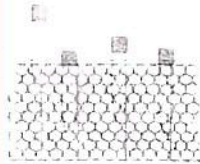
STEP 2



Place absorbent sheet inside the vessel.

STEP 2

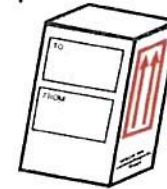
Slide tubes into the compartments of the bubble pouch and roll it up.



STEP 3

Slide the bubble pouch into the vessel and screw on the lid.

STEP 4



Fill in the addresses on the outer box. Be sure to address your package to an individual and include the phone number.

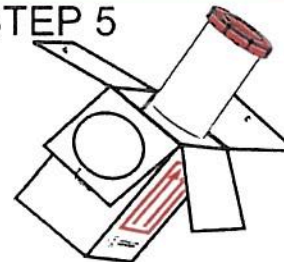
Affix the appropriate label to the outer box. If you are shipping an infectious substance, fill in the lines above the label as follows:

UN2814 Infectious Substance, affecting humans, (name of infectious substance)



If you are shipping an infectious substance, you must fill out the Dangerous Goods Shipping Declarations in triplicate. Spelling and neatness counts.

STEP 5



Slide the vessel into the outer box and close the flaps in the order indicated. *Be sure to slide flap #1 over the top of the vessel.* Secure with tape.