



# Missouri Weekly Influenza Surveillance Report 2019-2020 Influenza Season<sup>1</sup>

**Week 4: January 19, 2020 – January 25, 2020 Revised**

*All data are preliminary and may change as more reports are received.*

## Summary:

- The estimated influenza activity in Missouri is Widespread<sup>2</sup>.
- A total of 5,086 laboratory-positive<sup>3</sup> influenza cases (1,911 influenza A, 3,143 influenza B, and 32 untyped) were reported during Week 4. The season-to-date total of laboratory-positive influenza cases is 27,072 (36.1% influenza A, 62.8% influenza B, and 1.1% untyped). Five laboratory-positive cases of influenza (3 A H1N1 and 2 B/Victoria) were reported by the Missouri State Public Health Laboratory (MSPHL) during Week 4. The percentage of respiratory specimens testing positive for influenza in Missouri laboratories reporting to the National Respiratory and Enteric Virus Surveillance System (NREVSS) increased during Week 4 (Figure 6).
- Influenza-like illness (ILI) activity was above baseline for the Missouri Outpatient ILI Surveillance Network (ILINet) and for the hospital emergency room visit chief complaint data reported through ESSENCE. The reported percentage of visits for ILI was 6.24% (Figure 5) and 4.04% (Figure 7) through ILINet and ESSENCE respectively.<sup>4</sup> The ILI data from a small number of sites located in the Northwest Region of the state is currently unavailable in ESSENCE. Therefore, the ILI data for the Northwest Region should be interpreted with caution.
- A season-to-date total of 16 influenza-associated deaths have been reported in Missouri as of Week 4.<sup>5</sup> During Week 3, 77 deaths involving Pneumonia and Influenza (P&I) were reported to the Bureau of Vital Records, resulting in a season-to-date total of 665 P&I associated deaths in Missouri.<sup>6</sup>\*
- No influenza or ILI-associated outbreaks or school closures have been reported in Missouri as of Week 4.
- Seasonal influenza activity in the United States increased slightly during Week 3. National influenza surveillance information is prepared by CDC and is included in the weekly FluView report, which is available online at <http://www.cdc.gov/flu/weekly/fluactivitysurv.htm>.

<sup>1</sup>The 2019-2020 influenza season begins CDC Week 40 (week ending October 5, 2019) and ends CDC Week 39 (week ending September 26, 2020).

<sup>2</sup>Widespread is defined as: Outbreaks of influenza or increases in ILI cases and recent laboratory-confirmed influenza in at least half the regions of the state with recent laboratory evidence of influenza in the state.

<sup>3</sup>Laboratory-positive influenza includes the following test methods: rapid influenza diagnostic tests (antigen), reverse transcriptase polymerase chain reaction (RT-PCR) and other molecular assays, immunofluorescence antibody staining (Direct (DFA) or Indirect (IFA)), or viral culture.

<sup>4</sup>Influenza-like illness (ILI) is defined by ILINet as fever (temperature of 100°F [37.8°C] or greater) and a cough and/or a sore throat without a known cause other than influenza. ILI is defined by ESSENCE as Emergency Department chief complaints for Influenza or (FeverPlus and (Cough or SoreThroat) and not NonILIFevers).

<sup>5</sup>All influenza-associated deaths became reportable in Missouri in 2016. These reports are verified by local public health agencies and DHSS.

<sup>6</sup>The P&I data are obtained from vital statistics data using ICD-10 codes, which are available one week later. The P&I data for the CDC Week provided is the most current data available.

\*An issue with the P&I data was identified that resulted in some P&I related deaths not to be reported in prior weeks. This issue has been corrected and all prior Influenza Weekly Reports that were impacted have been amended.

## Surveillance Data:

### Interactive Maps

The jurisdiction-specific influenza data are provided through interactive maps available at <http://bit.ly/moflu19>. Click on the jurisdiction to view the influenza data specific to that jurisdiction.

- Reported Laboratory-positive Influenza Cases by Influenza Type by Jurisdiction, CDC Week 4
- Reported Week-specific Rate per 100,000 Population, CDC Week 4
- Reported Laboratory-positive Influenza Cases by Influenza Type by Jurisdiction, Season-to-Date
- Reported Rate per 100,000 Population, Season-to-Date

### Data Figures

**Figure 1. Number of Laboratory-positive<sup>†</sup> Influenza Cases by Influenza Type, Missouri, CDC Week 4 (January 19, 2020 – January 25, 2020)\***

Influenza Type	Week 2	Week 3	Week 4	2019-2020* Season-to-Date
Influenza A	1,417	1,649	1,911	9,764
Influenza B	2,092	2,732	3,143	17,003
Influenza Unknown Or Untyped	58	72	32	305
<b>Total</b>	<b>3,567</b>	<b>4,453</b>	<b>5,086</b>	<b>27,072</b>

<sup>†</sup>Laboratory-positive influenza includes the following test methods: rapid influenza diagnostic tests (antigen), reverse transcriptase polymerase chain reaction (RT-PCR) and other molecular assays, immunofluorescence antibody staining (Direct (DFA) or Indirect (IFA)), or viral culture.

\*Influenza season begins week ending October 5, 2019 (CDC Week 40) Data Source: Missouri Health Information Surveillance System (WebSurv).

**Figure 2. Number of Laboratory-positive<sup>†</sup> Influenza Cases and Case Rates by Age Group, Missouri, CDC Week 4 (January 19, 2020 – January 25, 2020)\*<sup>‡</sup>**

Age Group	Week 4 Cases	Week 4 Rate <sup>‡</sup>	2019-2020* Season-to-Date	2019-2020* Season-to-Date Rate <sup>‡</sup>
00-04	884	236.14	4,936	1,318.52
05-24	2,690	167.65	11,675	727.63
25-49	950	49.65	6,598	344.81
50-64	360	29.12	2,392	193.47
65+	202	21.15	1,471	154.04
<b>Total</b>	<b>5,086</b>	<b>83.60</b>	<b>27,072</b>	<b>444.99</b>

<sup>†</sup>Laboratory-positive influenza includes the following test methods: rapid influenza diagnostic tests (antigen), reverse transcriptase polymerase chain reaction (RT-PCR) and other molecular assays, immunofluorescence antibody staining (Direct (DFA) or Indirect (IFA)), or viral culture.

\*Influenza season begins week ending October 5, 2019 (CDC Week 40) Data Source: Missouri Health Information Surveillance System (WebSurv)

<sup>‡</sup>Incidence Rate per 100,000 population

**Figure 3. Number of Laboratory-positive<sup>†</sup> Influenza Cases and Case Rates by Region, Missouri, CDC Week 4 (January 19, 2020 – January 25, 2020)<sup>\*\*</sup>**

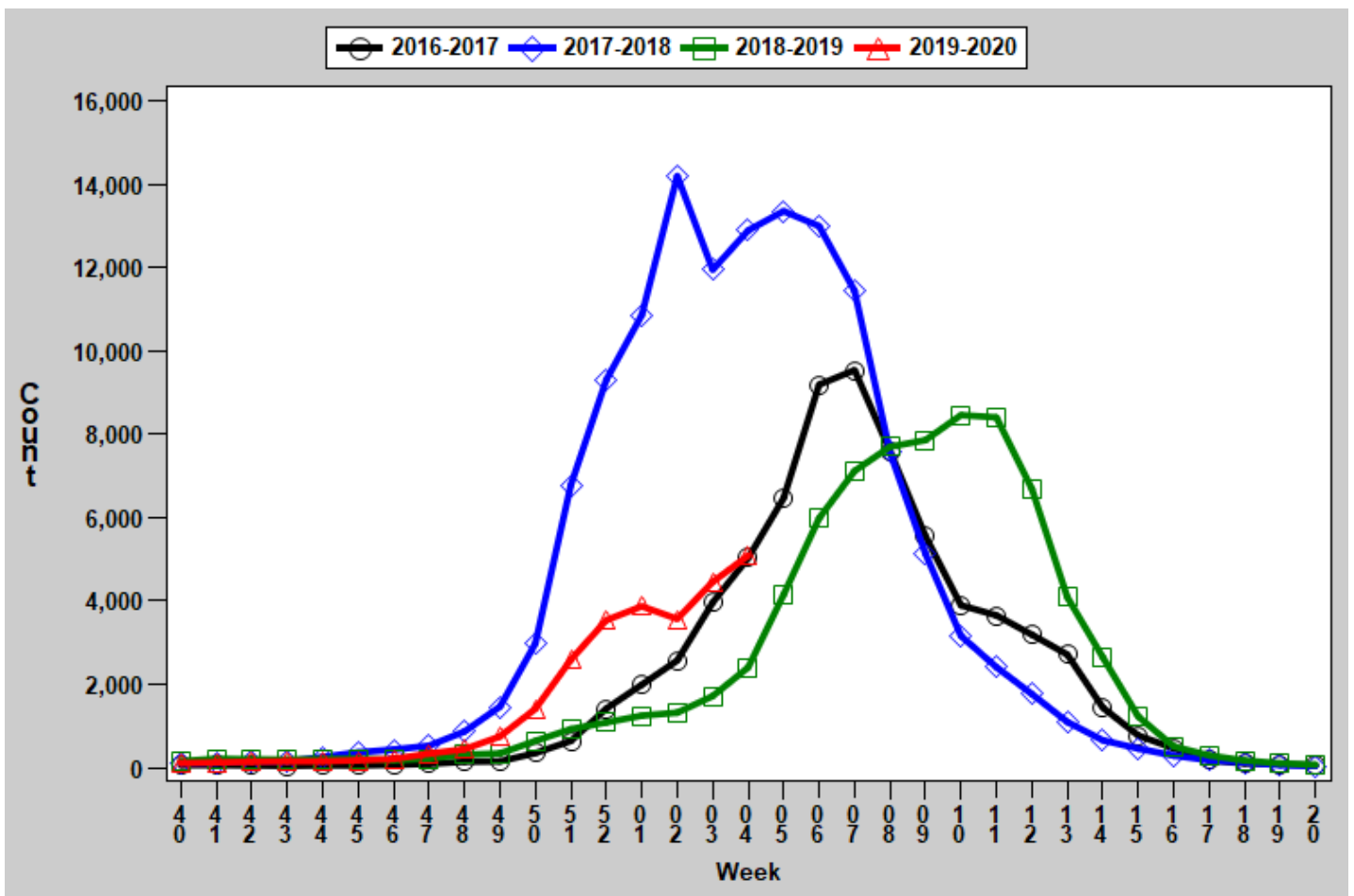
Region	Week 4 Cases	Week 4 Rate <sup>‡</sup>	2019-2020* Season-to-Date	2019-2020* Season-to-Date Rate <sup>‡</sup>
Central	262	38.70	2,873	424.37
Eastern	982	43.33	4,549	200.74
Northwest	1,765	110.48	13,026	815.39
Southeast	1,078	228.54	3,067	650.20
Southwest	999	93.25	3,557	332.03
<b>Total</b>	<b>5,086</b>	<b>83.60</b>	<b>27,072</b>	<b>444.99</b>

<sup>†</sup>Laboratory-positive influenza includes the following test methods: rapid influenza diagnostic tests (antigen), reverse transcriptase polymerase chain reaction (RT-PCR) and other molecular assays, immunofluorescence antibody staining (Direct (DFA) or Indirect (IFA)), or viral culture.

<sup>\*\*</sup>Influenza season begins week ending October 5, 2019 (CDC Week 40) Data Source: Missouri Health Information Surveillance System (WebSurv)

<sup>‡</sup>Incidence Rate per 100,000 population

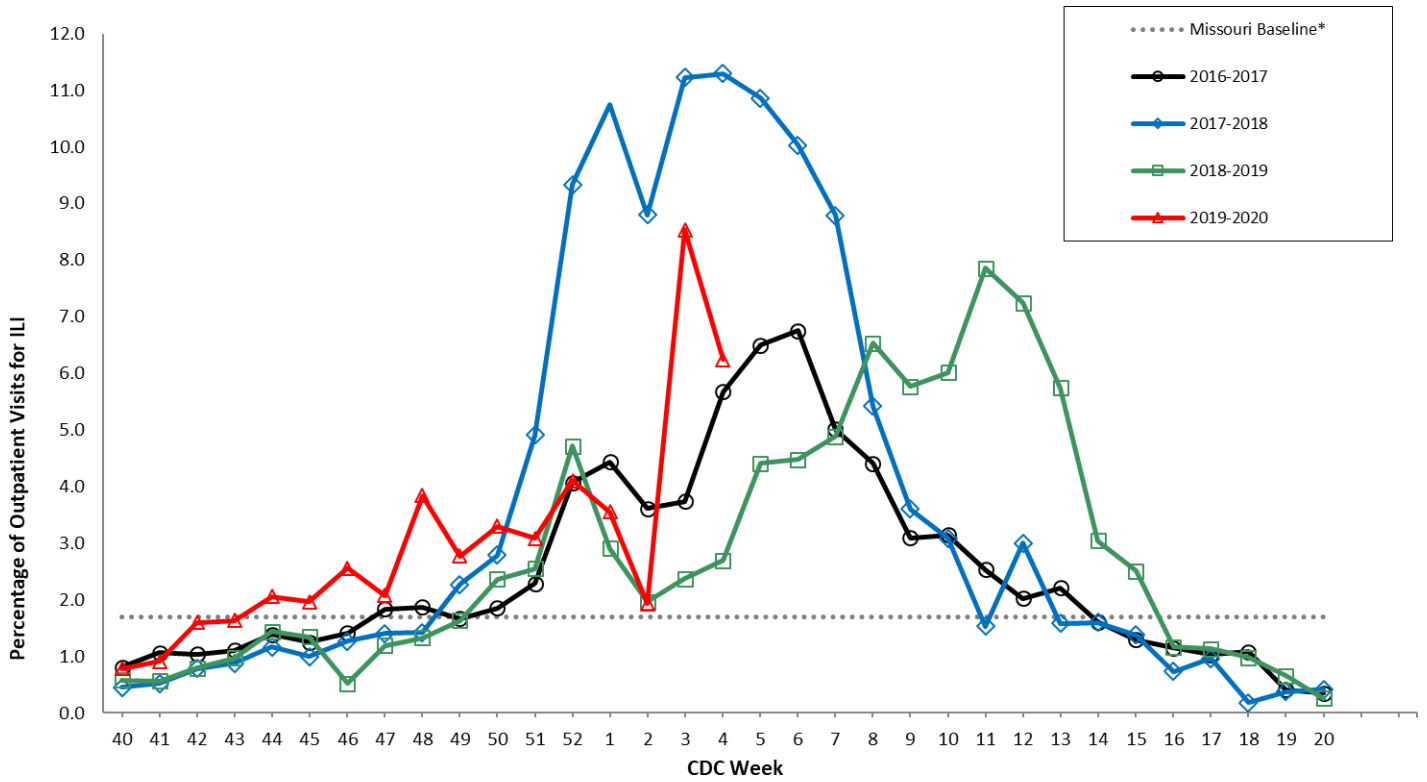
**Figure 4. Number of Laboratory-positive<sup>†</sup> Influenza Cases by CDC Week, Missouri, 2016-2020<sup>\*</sup>**



<sup>†</sup>Laboratory-positive influenza includes the following test methods: rapid influenza diagnostic tests (antigen), reverse transcriptase polymerase chain reaction (RT-PCR) and other molecular assays, immunofluorescence antibody staining (Direct (DFA) or Indirect (IFA)), or viral culture.

<sup>\*</sup>2019-2020 season-to-date through the week ending May 16, 2020 (Week 20).Data Source: Missouri Health Information Surveillance System (WebSurv).

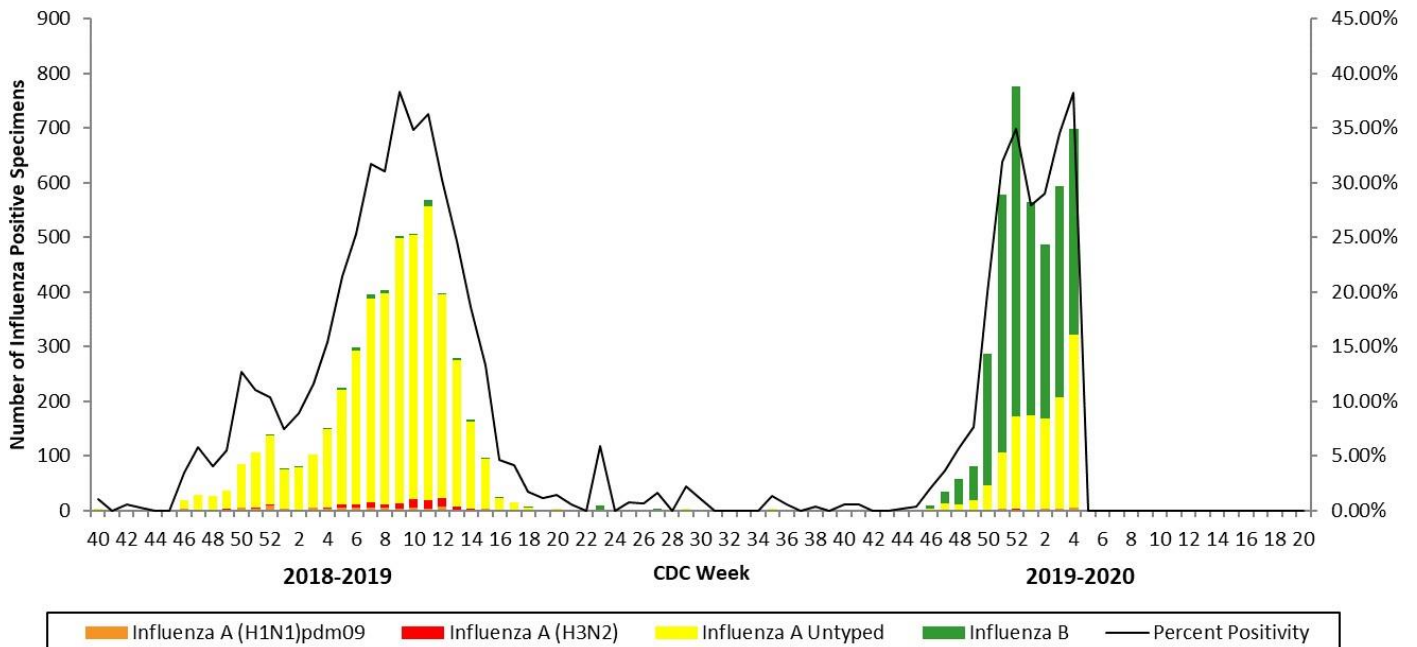
**Figure 5. Percentage of Outpatient Visits for Influenza-like Illness (ILI), Missouri Outpatient ILI Surveillance Network (ILINet) 2016-2020\*†**



\*The ILINet Region 7 (MO, IA, KS, NE) baseline is the mean percentage of patient visits for ILI during non-influenza weeks for the previous three seasons, plus two standard deviations. A non-influenza week is defined as periods of two or more consecutive weeks in which each week accounted for less than 2% of the season's total number of specimens that tested positive for influenza. Data Source: U.S. Outpatient Influenza-like Illness Surveillance Network (ILINet), Centers for Disease Control and Prevention (CDC).

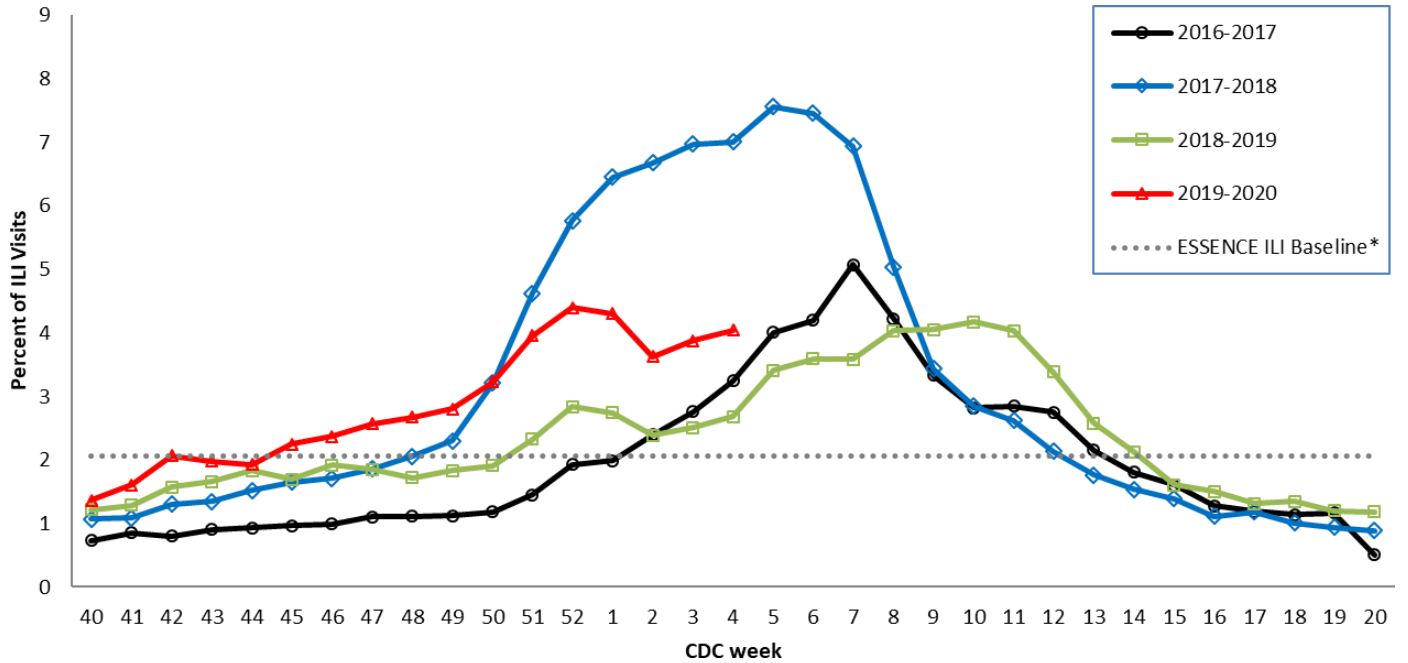
†2019-2020 season-to-date through the week ending May 16, 2020 (Week 20).

**Figure 6. Season-to-Date PCR (+) Tests for Influenza in Missouri**



Data Source: National Respiratory and Enteric Virus Surveillance System (NREVSS), Centers for Disease Control and Prevention (CDC). 2019-2020 season-to-date through the week ending May 16, 2020 (Week 20).

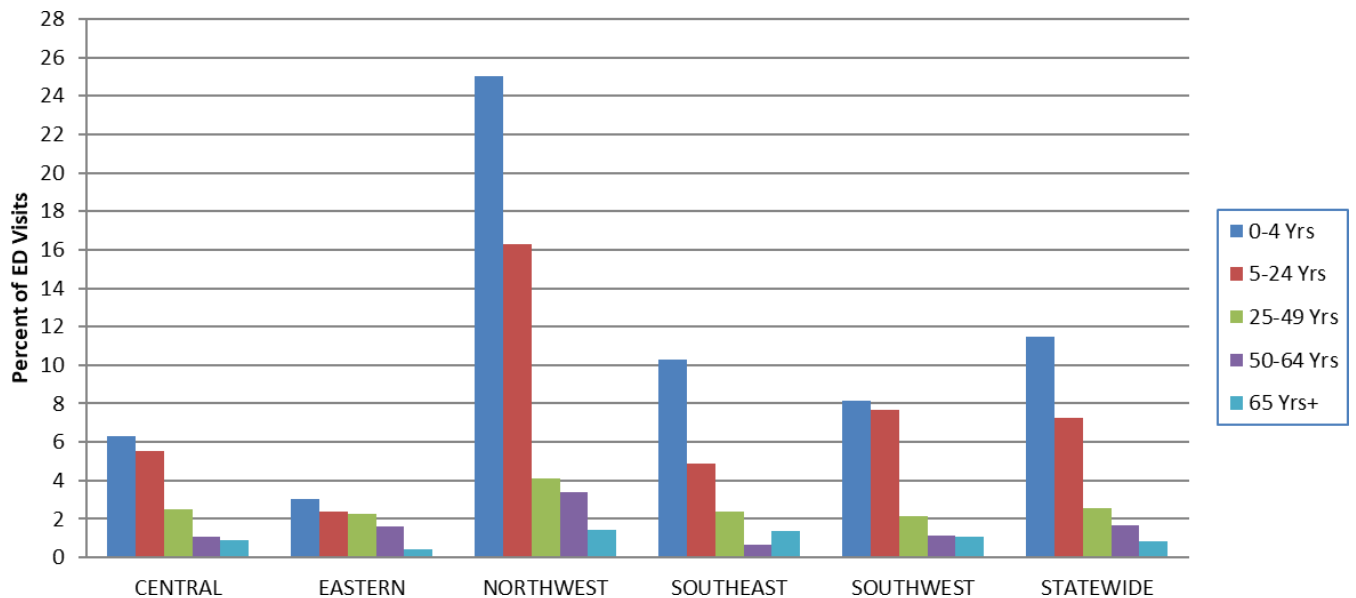
**Figure 7. Percentage of Emergency Department (ED) Visits for Influenza-like Illness (ILI) in ESSENCE Participating Hospitals, 2016-2020 Influenza Seasons\*\***



\*The ESSENCE ILI Baseline is the mean percent of ILI visits for each week during the previous three years (2016-18) when percentage of ILI visits were less than 2% of total visits, plus two standard deviations. Data Source: Missouri Department of Health and Senior Services (DHSS), Bureau of Reportable Disease Informatics, ESSENCE version 1.20.

†The ILI data from a small number of sites located in the Northwest Region of the state is temporarily unavailable in ESSENCE. Therefore, the ILI data for the Northwest Region should be interpreted with caution.

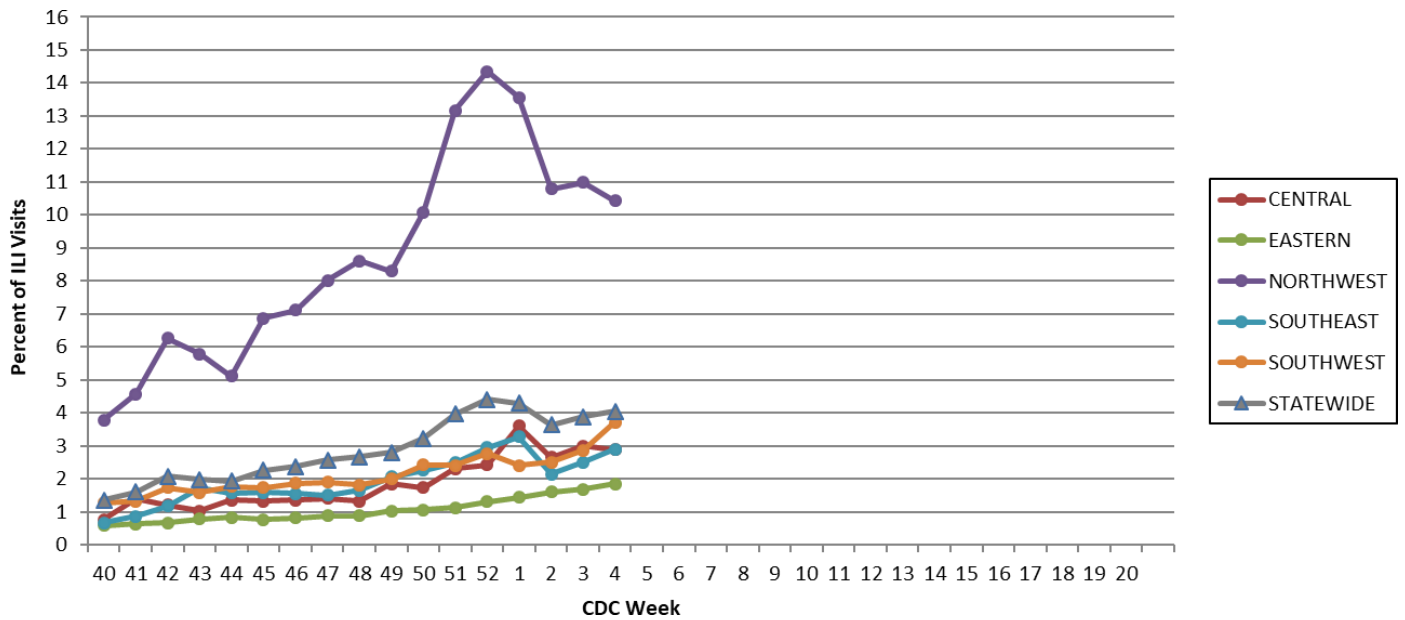
**Figure 8. Percentage of Emergency Department (ED) Visits for Influenza-like Illness (ILI) in ESSENCE Participating Hospitals, by Age Group, Region and Statewide, Week 4, 2020\***



Data Source: Missouri Department of Health and Senior Services (DHSS), Bureau of Reportable Disease Informatics, ESSENCE version 1.20.

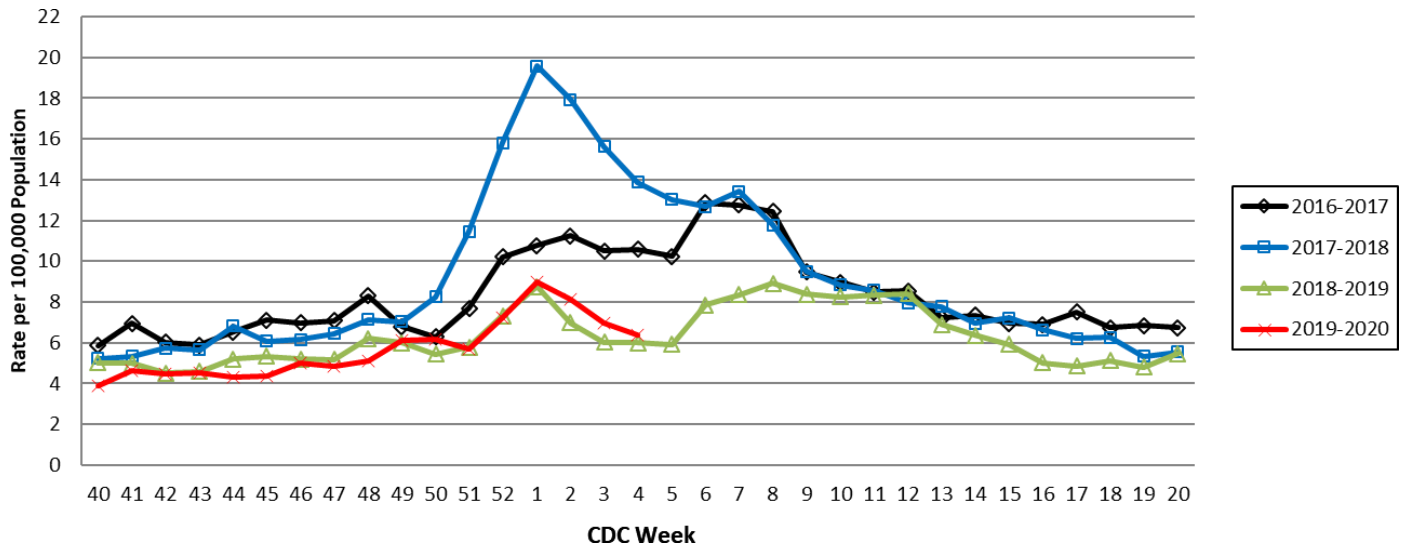
\*The ILI data from a small number of sites located in the Northwest Region of the state is temporarily unavailable in ESSENCE. Therefore, the ILI data for the Northwest Region should be interpreted with caution.

**Figure 9. Percentage of Emergency Department (ED) Visits for Influenza-like Illness (ILI) in ESSENCE Participating Hospitals, by Region and Statewide, 2019-2020 Influenza Season\***



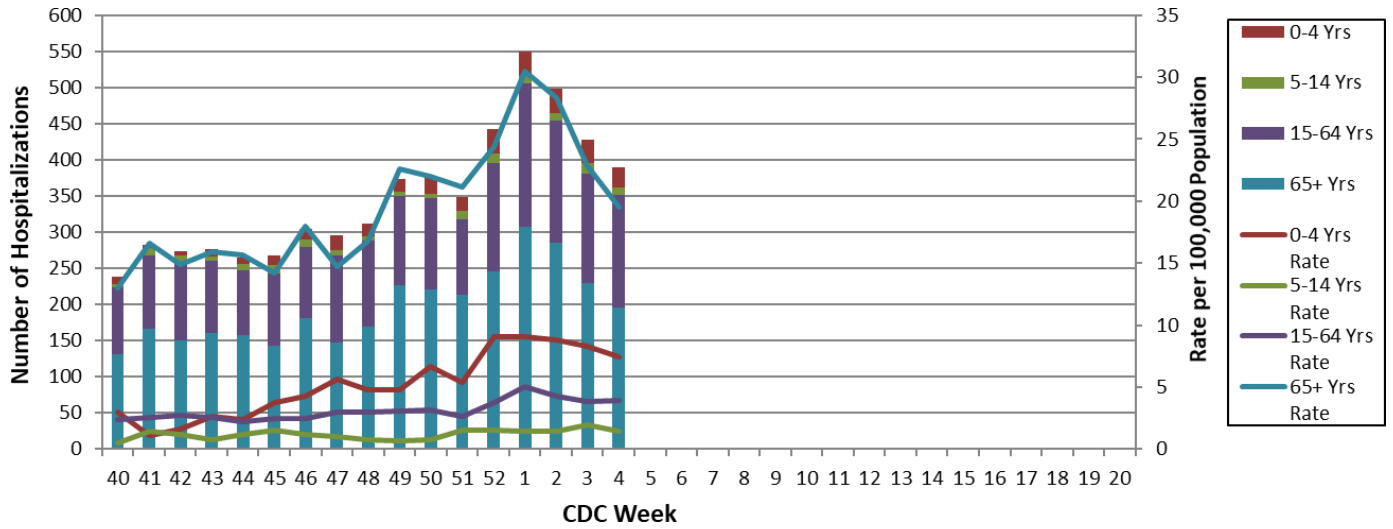
Data Source: Missouri Department of Health and Senior Services (DHSS), Bureau of Reportable Disease Informatics, ESSENCE version 1.20.  
 \*The ILI data from a small number of sites located in the Northwest Region of the state is temporarily unavailable in ESSENCE. Therefore, the ILI data for the Northwest Region should be interpreted with caution.

**Figure 10. Weekly Rate of Patients Hospitalized with Influenza and/or Pneumonia Syndromes in Missouri Hospitals, 2016-2020 Influenza Seasons**



Data Source: Missouri Department of Health and Senior Services (DHSS), Bureau of Reportable Disease Informatics, HL7 Messaging Portal.  
 Population data from Missouri Census Data Center 2017 (<https://census.missouri.edu>).

**Figure 11. Number of Patients Hospitalized with Influenza and/or Pneumonia Syndromes in Participating Missouri Hospitals, by Age Group, Week 4, 2019-2020 Influenza Season**



Data Source: Missouri Department of Health and Senior Services (DHSS), Bureau of Reportable Disease Informatics, HL7 Messaging Portal.

**Additional Influenza Data Sources:**

**Centers for Disease Control and Prevention: National Influenza Surveillance (FluView):**

<http://www.cdc.gov/flu/weekly/fluactivitysurv.htm>

**The National Respiratory and Enteric Virus Surveillance System (NREVSS):**

<https://www.cdc.gov/surveillance/nrevss/>

**World Health Organization: International Influenza Surveillance:**

[http://www.who.int/influenza/surveillance\\_monitoring/en/](http://www.who.int/influenza/surveillance_monitoring/en/)